



REAL ESTATE

ESTATE AGENCY : REDEFINED



Trafalgar Street, Gillingham ME7 4RQ

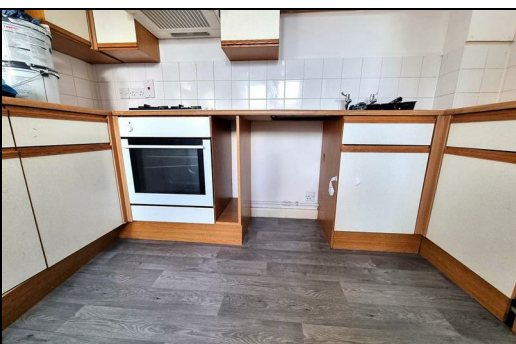
£900 Per Calendar Month

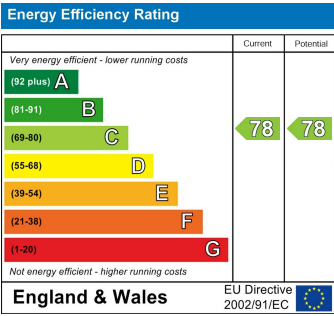
****REDECORATED**** CR REAL ESTATE have to offer this one bedroom top floor flat with off road parking. Openplan lounge/kitchen, good size bedroom, and bathroom. Available now. Situated close to Gillingham train station, high street and Medway Hospital

CR Real Estate are part The Ombudsman Redress Scheme and are a member of the Propertymark Client Money Protection Scheme. Tenant deposits are protected by the Tenancy Deposit Scheme. For more information, please contact us.

Client Money Protection is provided by: Client Money Protect. Scheme Ref: CMP004209

Independent redress is provided by: The Property Ombudsman (TPO). Membership Number: E01687





ESTATE AGENCY : REDEFINED

