



Jefferson Road, Sheerness ME12 2PU

£1,350 Per Calendar Month

IMMEDIATELY AVAILABLE! Call now to view this large terraced house available to rent on Jefferson Road. The property is well proportioned throughout and is available to let on a long term basis. This large victorian house offers open plan Lounge/Diner, Kitchen and Bathroom to the ground floor with three double separate bedrooms to the first. There is a courtyard to the rear. The property is located a short walk away from the shops and local amenities Sheerness has to offer. CALL NOW TO VIEW!

Measurements

Lounge/Diner 3.6m x 8.2m

Kitchen 2.2m x 3.3m

Utility Room 1.9m x 1.7m

Bedroom 1 2.8m x 4.3m

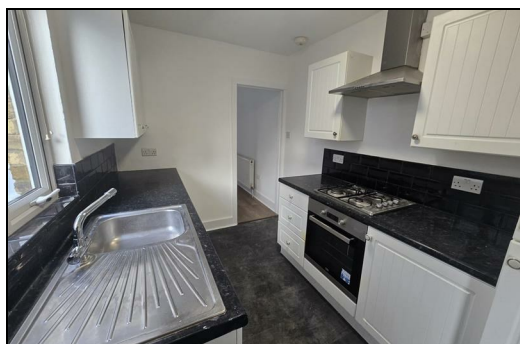
Bedroom 2 2.7m x 3.3m


Bedroom 3 2.2m x 3.3m


CR Real Estate are part The Ombudsman Redress Scheme and are a member of the Propertymark Client Money Protection Scheme. Tenant deposits are protected by the Tenancy Deposit Scheme. For more information, please contact us.

Client Money Protection is provided by: Client Money Protect. Scheme Ref: CMP004209

Independent redress is provided by: The Property Ombudsman (TPO). Membership Number: E01687



Energy Efficiency Rating		
	Current	Potential
Very energy efficient - lower running costs		
(92 plus) A		
(81-91) B		
(69-80) C		
(55-68) D		
(39-54) E		
(21-38) F		
(1-20) G		
Not energy efficient - higher running costs		
England & Wales	EU Directive 2002/91/EC	

Environmental Impact (CO ₂) Rating		
	Current	Potential
Very environmentally friendly - lower CO2 emissions		
(92 plus) A		
(81-91) B		
(69-80) C		
(55-68) D		
(39-54) E		
(21-38) F		
(1-20) G		
Not environmentally friendly - higher CO2 emissions		
England & Wales	EU Directive 2002/91/EC	



ESTATE AGENCY : REDEFINED