



REAL ESTATE

ESTATE AGENCY : REDEFINED



Balmoral Road, Gillingham ME7 4NT

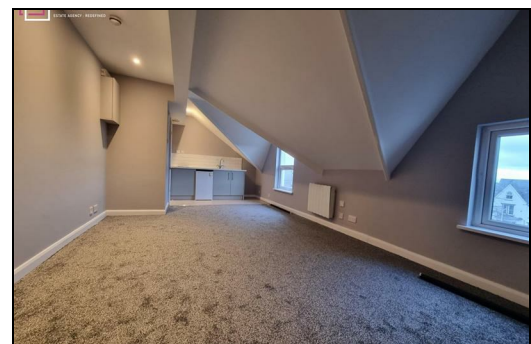
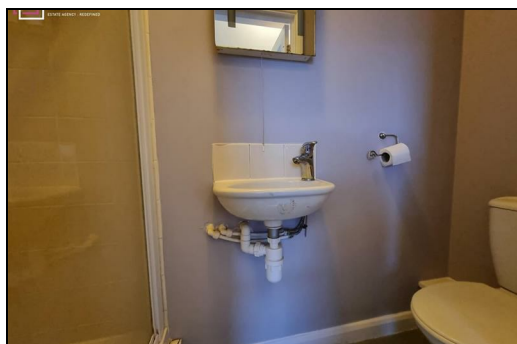
£800 Per Calendar Month

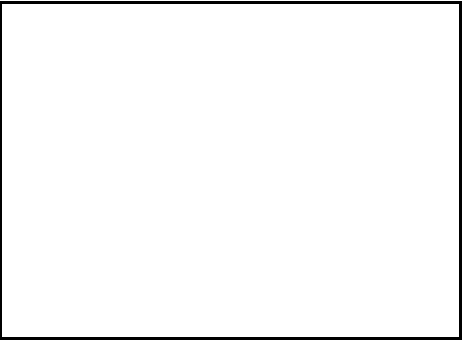
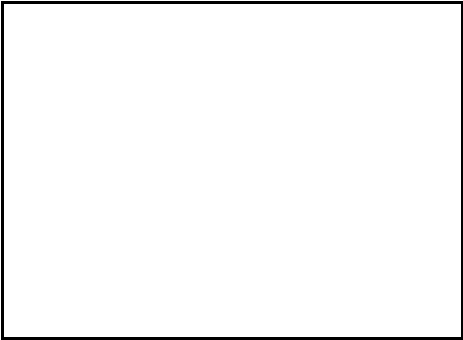
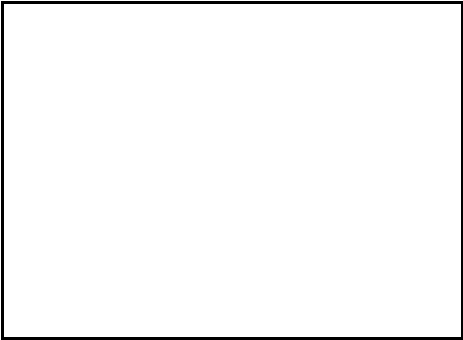
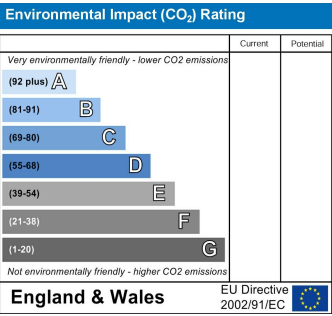
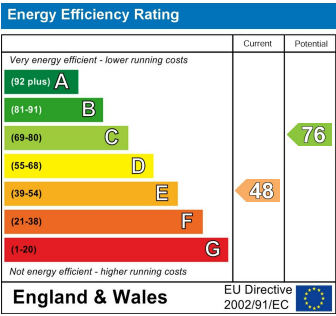
ZERO DEPOSIT SCHEME OPTION. Newly refurbished top floor studio flat, can be furnished or unfurnished to suit. Openplan lounge/kitchen/diner. Shower room. Close to train station and town centre. Easy reach to Medway Hospital. Perfect for single person, or couple for easy living.

CR Real Estate are part The Ombudsman Redress Scheme and are a member of the Propertymark Client Money Protection Scheme. Tenant deposits are protected by the Tenancy Deposit Scheme. For more information, please contact us.

Client Money Protection is provided by: Client Money Protect. Scheme Ref: CMP004209

Independent redress is provided by: The Property Ombudsman (TPO). Membership Number: E01687





ESTATE AGENCY : REDEFINED