



Hanway, Gillingham ME8 6AL

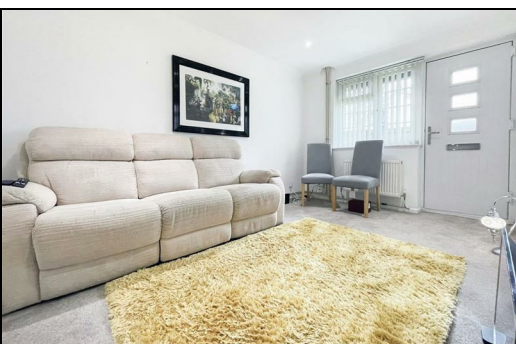
Guide Price £200,000

Guide Price £200,000 to £220,000

CR Real Estate are pleased to present this charming one-bedroom starter home located in a popular area of Gillingham, now available for sale with no onward chain. Whether you're a first-time buyer looking to take your first step onto the property ladder or an investor looking to add to your portfolio, this property offers an exciting opportunity.

Upon entering the home, you'll find a cozy lounge area, and adjacent to the lounge is a separate fitted kitchen with storage cupboard. Ascending to the first floor, you'll discover a shower room and generously sized double bedroom complete with a built-in wardrobe. Additionally, allocated parking adds an extra bonus to this charming property.

Situated in a desirable location and close by to an array of local amenities, shops, gym and fitness centres, and restaurants; this house is the perfect starter home. Don't miss out on the chance to make this your own, contact us today to arrange your viewing appointment.



Lounge

12'10 x 9'0 (3.91m x 2.74m)

Kitchen

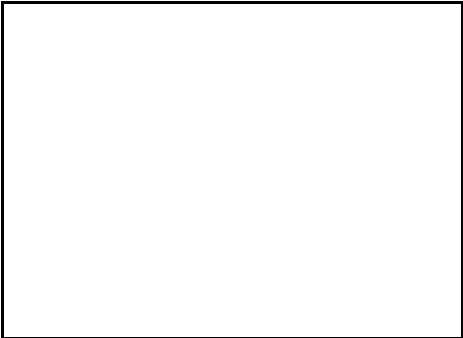
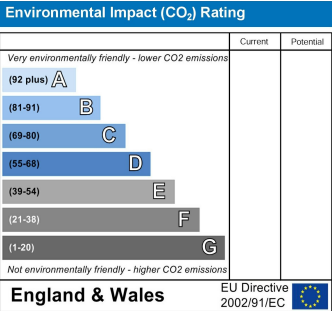
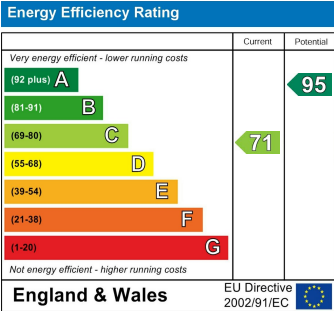
9'5 x 6'10 (2.87m x 2.08m)

Bedroom

12'10 x 7'10 (3.91m x 2.39m)

Shower Room

6'6 x 6'0 (1.98m x 1.83m)



ESTATE AGENCY : REDEFINED

