



REAL ESTATE

ESTATE AGENCY : REDEFINED



Canterbury Street, Gillingham ME7 5XN

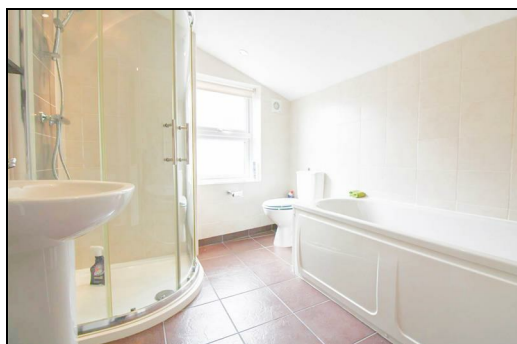
£1,250 Per Calendar Month

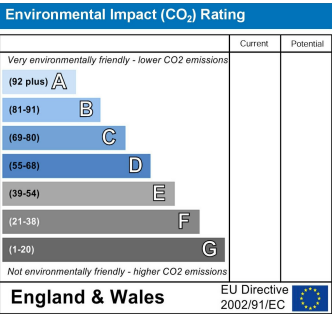
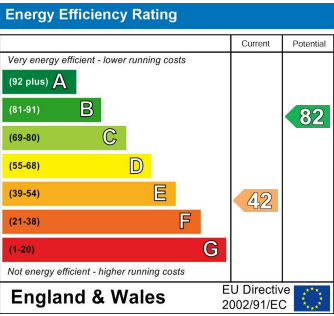
FIRST MONTHS RENT HALF PRICE IF MOVE IN BEFORE CHRISTMAS. AVAILABLE NOW. CR Real Estate are delighted to market this spacious and well presented TWO BEDROOM HOME in Gillingham. Close to Town Centre and transport links we are sure that this property will prove popular with professionals and families. The ground floor boasts a large reception room there is also a modern fitted kitchen with integrated cooker & hob. On the first floor you will find a spacious second reception room, family bathroom and a large bedroom with plenty of storage space. On the top floor you will find a spacious open plan attic room with velux windows.

CR Real Estate are part The Ombudsman Redress Scheme and are a member of the Propertymark Client Money Protection Scheme. Tenant deposits are protected by the Tenancy Deposit Scheme. For more information, please contact us.

Client Money Protection is provided by: Client Money Protect. Scheme Ref: CMP004209

Independent redress is provided by: The Property Ombudsman (TPO). Membership Number: E01687





ESTATE AGENCY : REDEFINED

