



West Street

Gillingham | ME7 1EF

West Street , Gillingham, ME7 1EF

Situated just a short walk from Gillingham train station and High Street, this well-presented three-bedroom terraced house offers modern living in a highly convenient location — and with no onward chain, it's ready for a smooth and speedy move.

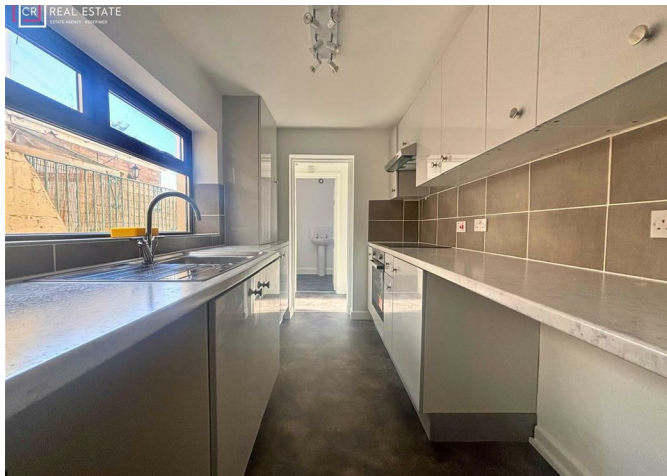
The ground floor features a bright lounge and a separate dining area, ideal for both relaxing and entertaining. The modern fitted kitchen and contemporary family bathroom are also located on the ground floor, all tastefully updated throughout.

Upstairs, you'll find three bedrooms, with the third bedroom accessed via the second — perfect as a home office, nursery, or dressing room.

Additional benefits include a useful cellar for storage and a low-maintenance, enclosed rear garden — ideal for enjoying outdoor space with privacy.

Whether you're a first-time buyer, commuter, or investor, this move-in-ready home ticks all the boxes

£240,000



Entrance Hall

Lounge

9'7 x 8'5 (2.92m x 2.57m)

Dining Room

11'4 x 10'1 (3.45m x 3.07m)

Kitchen

10'0 x 6'5 (3.05m x 1.96m)

Bathroom

7'7 x 5'3 (2.31m x 1.60m)

Cellar

11'5 x 9'7 (3.48m x 2.92m)

Bedroom

11'5 x 9'7 (3.48m x 2.92m)

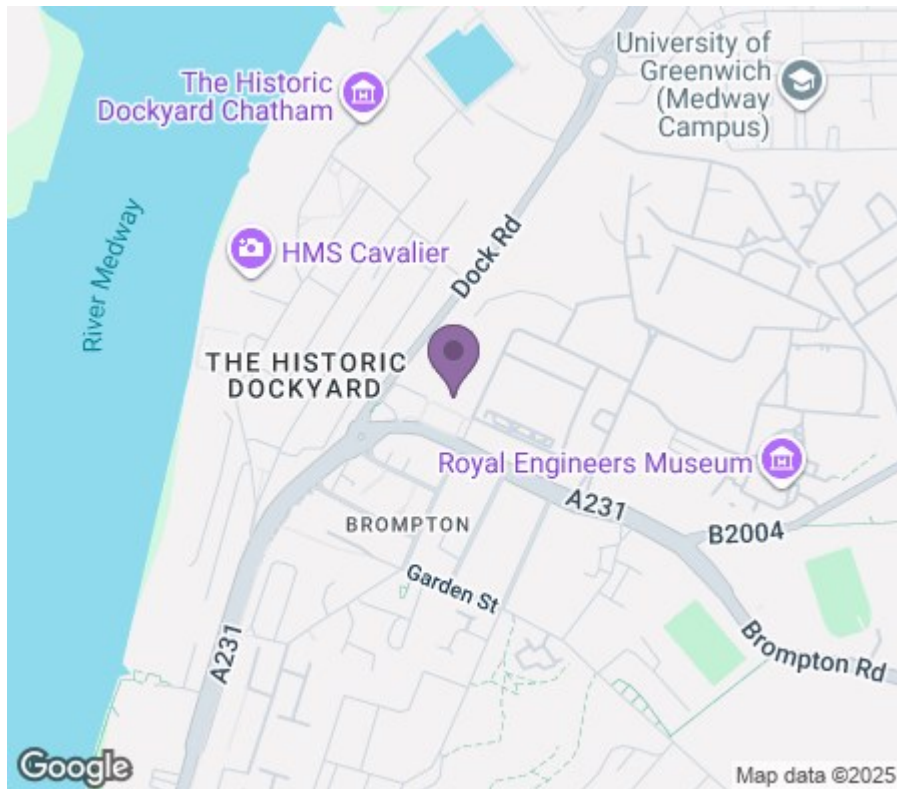
Bedroom

11'5 x 10'1 (3.48m x 3.07m)

Bedroom

10'0 x 6'5 (3.05m x 1.96m)





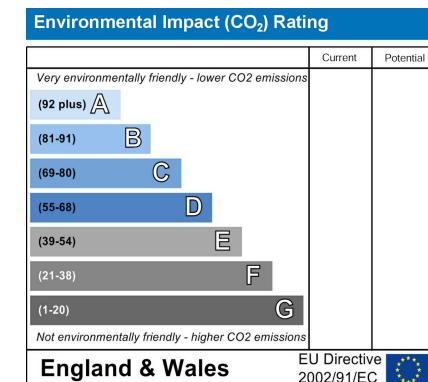
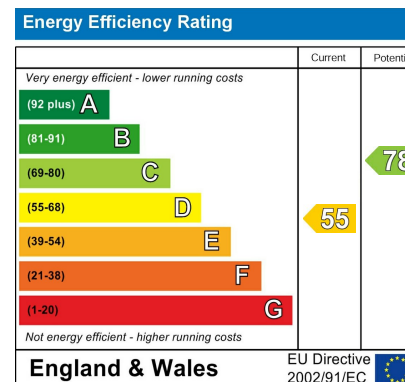
18 - 20 High Street
Gillingham
Kent
ME7 1BB

01634 570057

www.crralestate.co.uk

twitter.com/CRRRealEstateUK

facebook.com/CRRRealEstateUK



CR Real Estate endeavour to maintain accurate depictions of properties in Virtual Tours, Floor Plans and descriptions, however, these are intended only as a guide and purchasers must satisfy themselves by personal inspection.