



REAL ESTATE

ESTATE AGENCY : REDEFINED



Claire House, Maidstone ME15 6RT

£1,450 Per Calendar Month

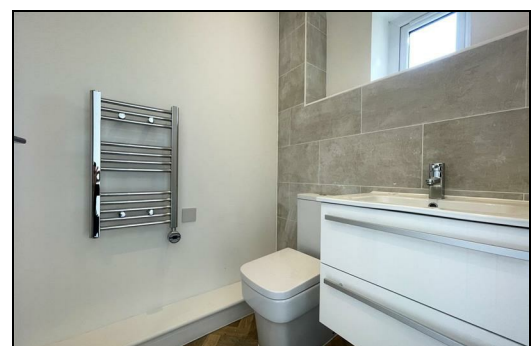
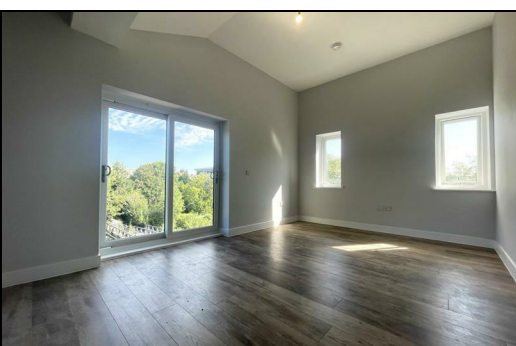
A stunning collection of brand-new two-bedroom apartments next to the river, available to rent in the Tovil area, just minutes from Maidstone town centre.


Each apartment offers:


- Spacious open-plan kitchen, dining, and living area, ideal for modern living
- Two generous size bedrooms, with the master benefiting from an ensuite
- Contemporary bathroom with high quality fixtures
- Modern kitchen with integrated appliances
- Private balcony or Juliet balcony in selected apartments with views over the river
- Allocated parking space
- Secure entry system

With sizes ranging from 72.4 sqm to 85.6 sqm, these apartments are finished to an exceptional standard and provide a bright, airy feel throughout.

Perfectly located close to local shops, schools, and excellent transport links, these homes are ideal for professionals, couples, or small families looking for stylish, low-maintenance living.



| Energy Efficiency Rating | | |
|--|---------|-----------|
| | Current | Potential |
| Very energy efficient - lower running costs | | |
| (92 plus) A | | |
| (81-91) B | | |
| (69-80) C | | |
| (55-68) D | | |
| (39-54) E | | |
| (21-38) F | | |
| (1-20) G | | |
| Not energy efficient - higher running costs | | |
| England & Wales EU Directive 2002/91/EC  | | |

| Environmental Impact (CO ₂) Rating | | |
|--|---------|-----------|
| | Current | Potential |
| Very environmentally friendly - lower CO2 emissions | | |
| (92 plus) A | | |
| (81-91) B | | |
| (69-80) C | | |
| (55-68) D | | |
| (39-54) E | | |
| (21-38) F | | |
| (1-20) G | | |
| Not environmentally friendly - higher CO2 emissions | | |
| England & Wales EU Directive 2002/91/EC  | | |



ESTATE AGENCY : REDEFINED