



Loose Road

Maidstone | ME15 9PY



REAL ESTATE

ESTATE AGENCY : REDEFINED

Loose Road , Maidstone, ME15 9PY

NO ONWARD CHAIN! On the edge of the picturesque Loose Conservation Area, this beautifully presented two-bedroom Victorian end-of-terrace home blends period charm with contemporary living. Inside, you'll find a stylish modern kitchen and bathroom, while outside, a landscaped rear garden offers a private and peaceful retreat, ideal for entertaining or unwinding.

The property also benefits from a fully powered double garage with private rear access, perfect for parking, storage, or even a home workshop.

Situated in an enviable location for countryside walks through the scenic Loose Valley and Swiss Valley, you're also just a stone's throw from the expansive green spaces of Mote Park and South Park.

£325,000



Living Room

Kitchen/Breakfast Room

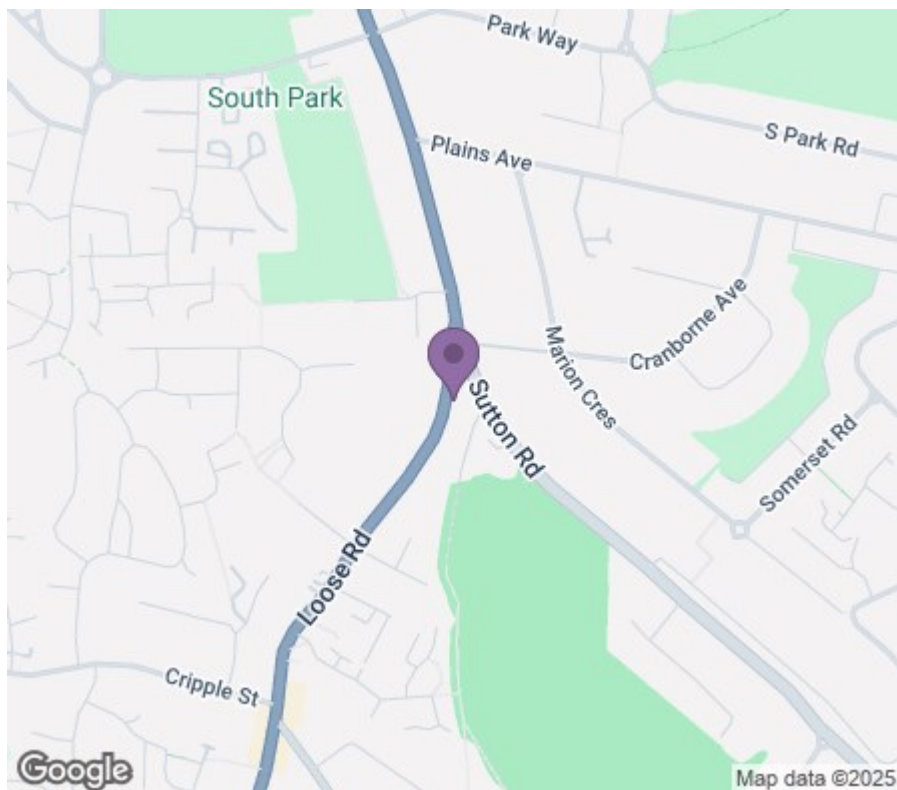
Bedroom

Bedroom

Family Bathroom

Loft Room





REAL ESTATE
ESTATE AGENCY : REDEFINED

18 - 20 High Street
Gillingham
Kent
ME7 1BB

01634 570057

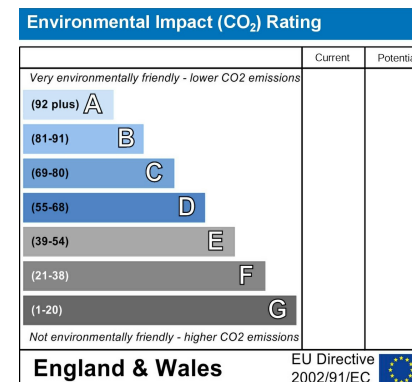
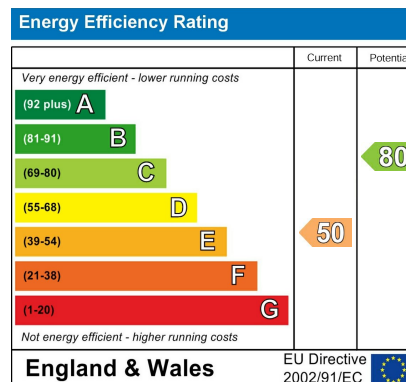
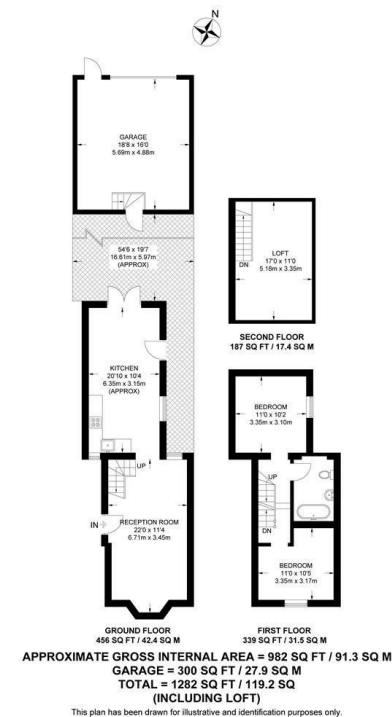
www.crralestate.co.uk

twitter.com/CRRRealEstateUK

facebook.com/CRRRealEstateUK



rightmove
find your happy



CR Real Estate endeavour to maintain accurate depictions of properties in Virtual Tours, Floor Plans and descriptions, however, these are intended only as a guide and purchasers must satisfy themselves by personal inspection.