



## Barleycorn Drive, Gillingham ME8 9NA

**£1,100,000**

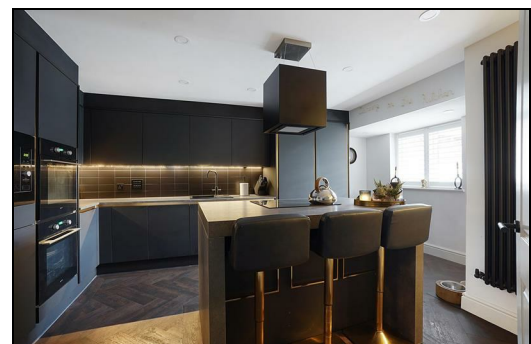
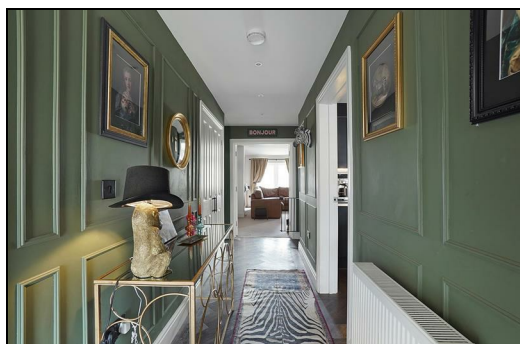
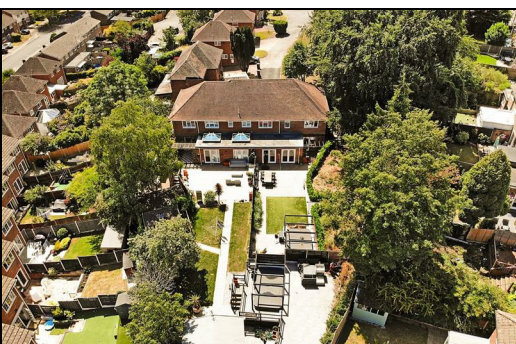
Nestled in a peaceful residential area of Rainham, this substantial 9-bedroom detached property presents a rare and versatile opportunity. Currently configured as two beautifully appointed semi-detached homes under one title, this unique residence sits on an expansive 1/3-acre plot, perfect for multi-generational living.

Each side of the property has been tastefully updated throughout, offering spacious and modern living accommodation with high-quality finishes. Both feature contemporary kitchens, generous lounge areas, and convenient cloakrooms/WCs.


One side boasts five double bedrooms, including a luxurious master suite with en suite shower room and walk-in wardrobe, plus a stylish family bathroom. The other side offers four double bedrooms, also with an en suite and walk-in dressing room, along with its own family bathroom.


Externally, each home benefits from off-street parking, a private garage, and beautifully landscaped gardens, complete with swim spas — ideal for relaxation or entertaining.

This is a truly flexible property in a desirable location, offering space, privacy, and modern comfort throughout. Viewing is highly recommended to appreciate the full potential.





Energy Efficiency Rating		
	Current	Potential
Very energy efficient - lower running costs		
(92 plus) <b>A</b>		
(81-91) <b>B</b>		
(69-80) <b>C</b>		
(55-68) <b>D</b>		
(39-54) <b>E</b>		
(21-38) <b>F</b>		
(1-20) <b>G</b>		
Not energy efficient - higher running costs		
<b>England &amp; Wales</b> EU Directive 2002/91/EC 		

Environmental Impact (CO <sub>2</sub> ) Rating		
	Current	Potential
Very environmentally friendly - lower CO2 emissions		
(92 plus) <b>A</b>		
(81-91) <b>B</b>		
(69-80) <b>C</b>		
(55-68) <b>D</b>		
(39-54) <b>E</b>		
(21-38) <b>F</b>		
(1-20) <b>G</b>		
Not environmentally friendly - higher CO2 emissions		
<b>England &amp; Wales</b> EU Directive 2002/91/EC 		



ESTATE AGENCY : REDEFINED

