



Lower Rainham Road

Gillingham | ME8 7TY



REAL ESTATE

ESTATE AGENCY : REDEFINED

Lower Rainham Road

Rainham, Gillingham, ME8 7TY

A beautifully presented four-bedroom detached property, offering a wealth of character and spacious accommodation, ideally situated in a highly desirable location close to well-regarded schools and Rainham train station.

This substantial family home provides an exceptional layout with an abundance of ground floor living space, including a formal lounge, separate dining room, family room, and a dedicated study—perfect for modern family living or working from home. At the heart of the property is a superb 25ft kitchen/breakfast room, thoughtfully designed for both everyday use and entertaining.

Upstairs, the property offers four generously sized bedrooms. The principal bedroom benefits from a stylish en suite shower room and a walk-in wardrobe, providing a private and luxurious retreat. The additional bedrooms are all well-proportioned, offering flexibility for family members or guests.

Externally, the home enjoys a mature and well-maintained rear garden, ideal for outdoor dining and relaxation. To the front, there is ample off-road parking and a detached double garage, ensuring both convenience and practicality.

This impressive residence combines period charm with modern comfort and represents an excellent opportunity for discerning buyers seeking a spacious and well-located family home in the heart of Rainham.

£650,000



Entrance Hall

Cloakroom/WC

Family Room

12'6 x 11'5 (3.81m x 3.48m)

Study/Play Room

9'5 x 9'3 (2.87m x 2.82m)

Dining Room

12'10 x 10'5 (3.91m x 3.18m)

Kitchen/Diner

25'7 x 10'3 (7.80m x 3.12m)

Utility Room

9'3 x 5'10 (2.82m x 1.78m)

Lounge

14'5 x 11'1 (4.39m x 3.38m)

Bedroom

15'7 x 11'8 (4.75m x 3.56m)

En Suite

9'3 x 4'11 (2.82m x 1.50m)

Walk In Wardrobe

Bedroom

11'10 x 11'5 (3.61m x 3.48m)

Bedroom

9'3 x 7'10 (2.82m x 2.39m)

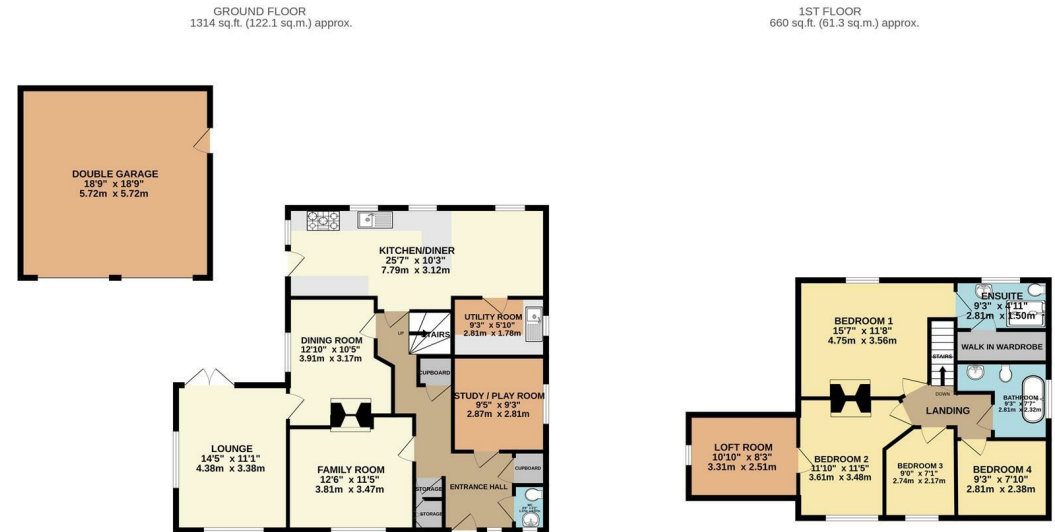
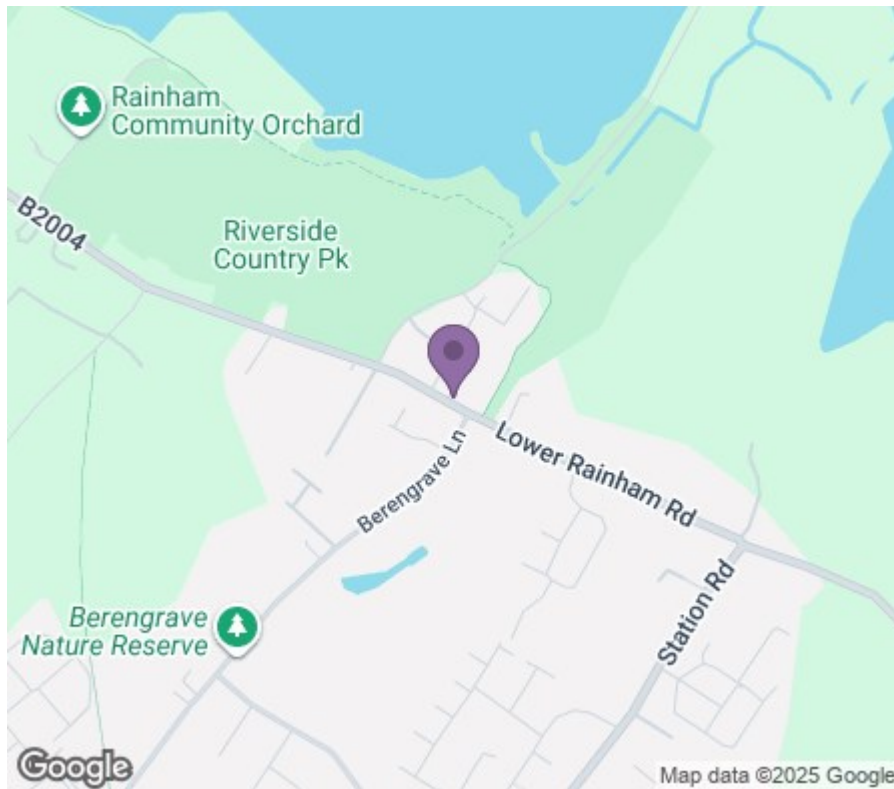
Bedroom

9'0 x 7'1 (2.74m x 2.16m)

Bathroom

9'3 x 7'7 (2.82m x 2.31m)





TOTAL FLOOR AREA: 1974 sq.ft. (183.4 sq.m.) approx.

Whilst every attempt has been made to ensure the accuracy of the floorplan contained here, measurements of doors, windows, rooms and any other items are approximate and no responsibility is taken for any error, omission or mis-statement. This plan is for illustrative purposes only and should be used as such by any prospective purchaser. The services, systems and appliances shown have not been tested and no guarantee as to their operability or efficiency can be given.

Made with Metropix ©2025



REAL ESTATE
ESTATE AGENCY : REDEFINED

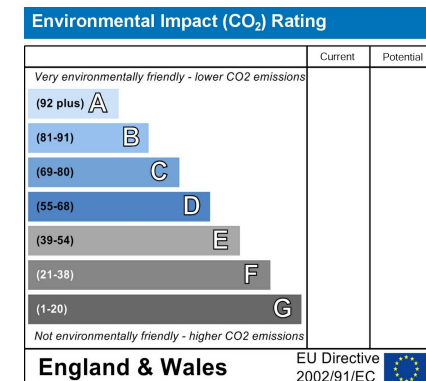
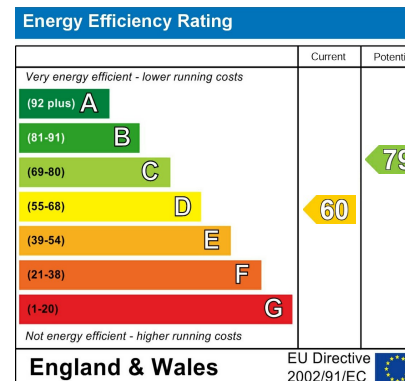
18 - 20 High Street
Gillingham
Kent
ME7 1BB

01634 570057

www.crralestate.co.uk
twitter.com/CRRRealEstateUK
facebook.com/CRRRealEstateUK



rightmove
find your happy



CR Real Estate endeavour to maintain accurate depictions of properties in Virtual Tours, Floor Plans and descriptions, however, these are intended only as a guide and purchasers must satisfy themselves by personal inspection.