



REAL ESTATE
ESTATE AGENCY. REDEFINED.

Edgar Close

West Malling | ME19 4JE



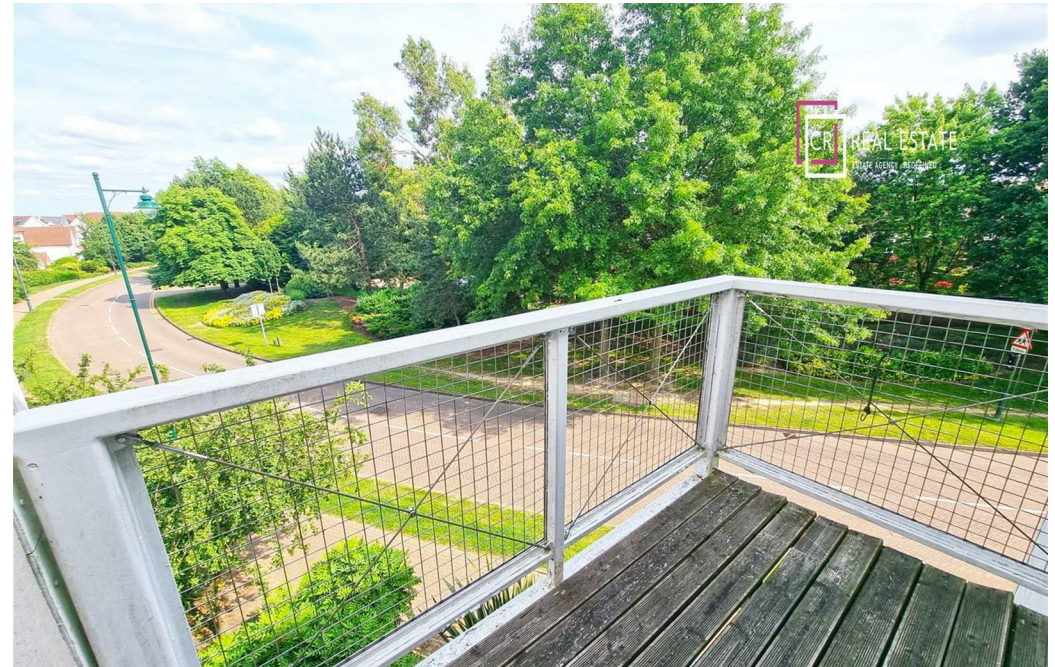
Edgar Close Kings Hill, West Malling, ME19 4JE

£1,950 Per Calendar Month

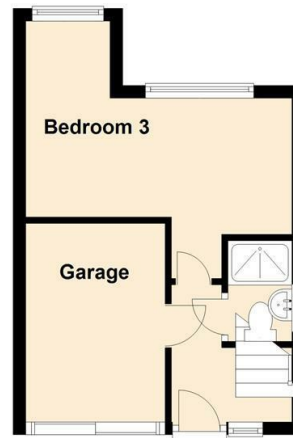
CR REAL ESTATE ARE THRILLED TO PRESENT THIS EXCEPTIONAL AND RARELY AVAILABLE FAMILY HOME IN THE HEART OF KINGSHILL — A TRUE HIDDEN GEM THAT YOU WON'T WANT TO MISS!

PERFECTLY POSITIONED WITHIN WALKING DISTANCE OF AN OFSTED-RATED OUTSTANDING NURSERY AND PRIMARY SCHOOL,

- SPACIOUS THREE BEDROOM HOME IN KINGSHILL
- EPC RATING C
- COUNCIL TAX BAND E
- INTEGRAL GARAGE
- THREE BALCONIES
- NUSERY AND PRIMARY SCHOOL LOCALLY
- HOLDING DEPOSIT £450.00
- SECURITY DEPOSIT £2250.00
- AVAILABLE NOW
- PROPERTIES RARELY AVAILABLE TO LET IN THIS AREA



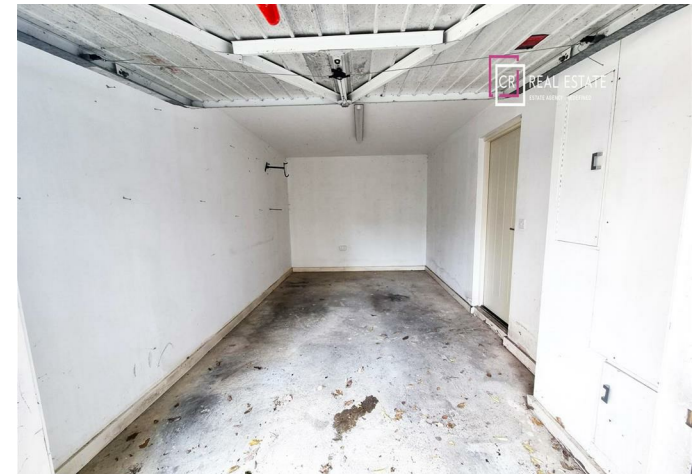
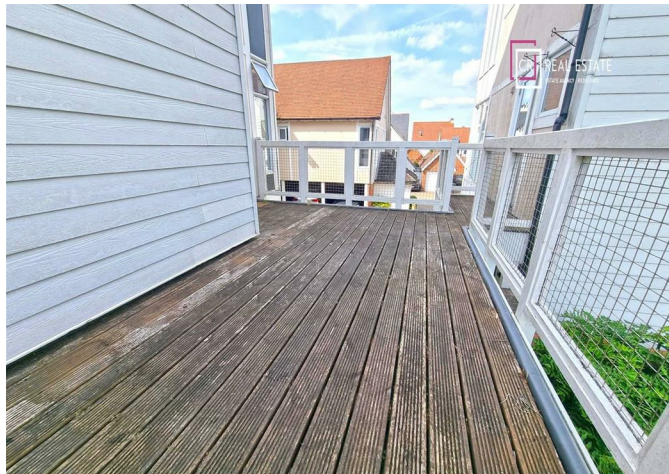
Ground Floor



First Floor



Second Floor





REAL ESTATE
ESTATE AGENCY : REDEFINED

18 - 20 High Street
Gillingham
Kent
ME7 1BB

01634 570057

www.crrealestate.co.uk
twitter.com/CRRealEstateUK
facebook.com/CRRealEstateUK



rightmove
find your happy



Energy Efficiency Rating		
	Current	Potential
Very energy efficient - lower running costs		
(92 plus) A		
(81-91) B		
(69-80) C		
(55-68) D		
(39-54) E		
(21-38) F		
(1-20) G		
Not energy efficient - higher running costs		
	73	83
England & Wales		
EU Directive 2002/91/EC		

Environmental Impact (CO ₂) Rating		
	Current	Potential
Very environmentally friendly - lower CO ₂ emissions		
(92 plus) A		
(81-91) B		
(69-80) C		
(55-68) D		
(39-54) E		
(21-38) F		
(1-20) G		
Not environmentally friendly - higher CO ₂ emissions		
England & Wales		
EU Directive 2002/91/EC		

CR Real Estate endeavour to maintain accurate depictions of properties in Virtual Tours, Floor Plans and descriptions, however, these are intended only as a guide and purchasers must satisfy themselves by personal inspection.