



**REAL ESTATE**  
ESTATE AGENCY : REDEFINED



## **Orchard Court, Sittingbourne ME9 9BE**

**£1,550 Per Calendar Month**

CR Real Estate are thrilled to offer this beautifully presented three-bedroom semi-detached home, available to rent this June!

Set in a sought-after location with stunning countryside views, this spacious home is perfect for families or professionals looking for comfort, style, and convenience.

Step inside to a bright and welcoming entrance hallway, a handy downstairs cloakroom, a sleek and modern kitchen, and a generous lounge—perfect for relaxing or entertaining—leading out to a private rear garden where you can soak up the open countryside surroundings.

Upstairs, you'll find three well-sized bedrooms, including a master with a stylish en-suite shower room, along with a modern family bathroom.

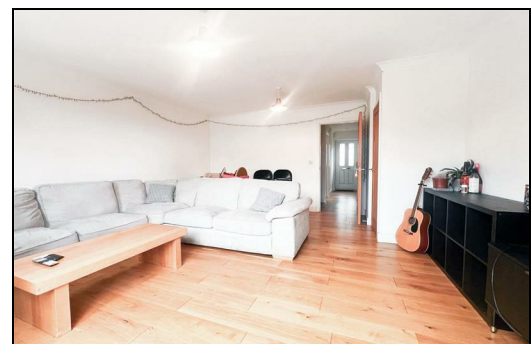
This fantastic home also benefits from a carport for off-road parking and additional visitor spaces.

A rare opportunity – don't miss your chance to make this wonderful property your next home!

CR Real Estate are part The Ombudsman Redress Scheme and are a member of the Propertymark Client Money Protection Scheme. Tenant deposits are protected by the Tenancy Deposit Scheme. For more information, please contact us.

Client Money Protection is provided by: Client Money Protect. Scheme Ref: CMP004209

Independent redress is provided by: The Property Ombudsman (TPO). Membership Number: E01687



Energy Efficiency Rating		
	Current	Potential
Very energy efficient - lower running costs		
(92 plus) A		95
(81-91) B	83	
(69-80) C		
(55-68) D		
(39-54) E		
(21-38) F		
(1-20) G		
Not energy efficient - higher running costs		
England & Wales		
EU Directive 2002/91/EC		

Environmental Impact (CO <sub>2</sub> ) Rating		
	Current	Potential
Very environmentally friendly - lower CO <sub>2</sub> emissions		
(92 plus) A		
(81-91) B		
(69-80) C		
(55-68) D		
(39-54) E		
(21-38) F		
(1-20) G		
Not environmentally friendly - higher CO <sub>2</sub> emissions		
England & Wales		
EU Directive 2002/91/EC		



ESTATE AGENCY : REDEFINED