



REAL ESTATE

ESTATE AGENCY : REDEFINED



5 Windmill Road, Gillingham ME7 5NT

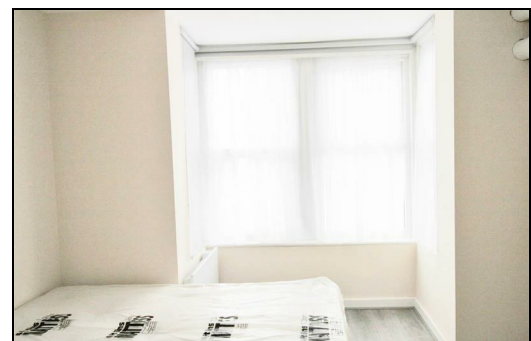
£795 Per Month


CR Real Estate are delighted to offer this lovely modern flat within a block of four. Internally the property benefits from a spacious living area with kitchenette that has a fridge freezer and sink (washing machine and cooker available in shared kitchen). There is also a double bedroom with bedroom furniture with a separate modern shower room. Shared garden available to the rear. Council Tax & Water bills included in the rent. The property is situated a stone throw from Medway Hospital as well as a short walk to Gillingham Town Centre and Train Station. Please call us now to arrange your viewing!


CR Real Estate are part The Ombudsman Redress Scheme and are a member of the Propertymark Client Money Protection Scheme. Tenant deposits are protected by the Tenancy Deposit Scheme. For more information, please contact us.

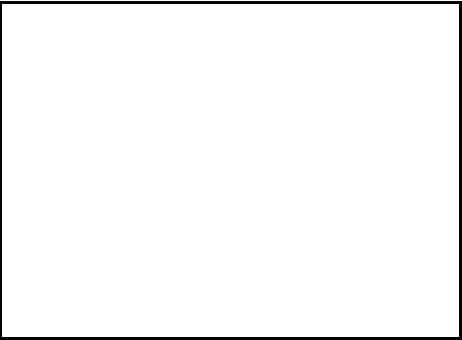
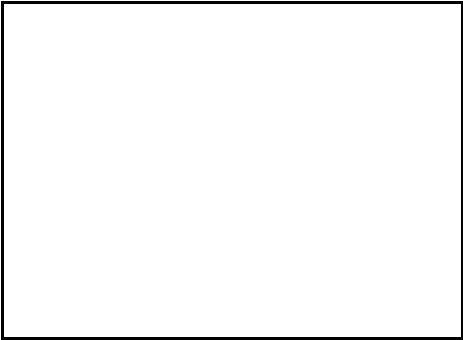
Client Money Protection is provided by: Client Money Protect. Scheme Ref: CMP004209

Independent redress is provided by: The Property Ombudsman (TPO). Membership Number: E01687



Energy Efficiency Rating		
	Current	Potential
Very energy efficient - lower running costs		
(92 plus) A		
(81-91) B		
(69-80) C		
(55-68) D		
(39-54) E		
(21-38) F		
(1-20) G		
Not energy efficient - higher running costs		
England & Wales EU Directive 2002/91/EC 		

Environmental Impact (CO ₂) Rating		
	Current	Potential
Very environmentally friendly - lower CO2 emissions		
(92 plus) A		
(81-91) B		
(69-80) C		
(55-68) D		
(39-54) E		
(21-38) F		
(1-20) G		
Not environmentally friendly - higher CO2 emissions		
England & Wales EU Directive 2002/91/EC 		



ESTATE AGENCY : REDEFINED

