



Windmill Road, Gillingham ME7 5PE

£750 Per Calendar Month

CR Real Estate are delighted to offer a selection of elegant, newly refurbished studio flats within this well-maintained block. Each unit is thoughtfully designed to provide comfortable and modern living, ideal for professionals and those seeking convenience.

The studios are offered fully furnished and benefit from an open-plan layout combining the bedroom, living area, and kitchenette, some have an additional room to separate the living and sleeping areas, along with a private en-suite shower room. Residents also have access to a communal, fully equipped kitchen, utility room, and a shared rear garden.

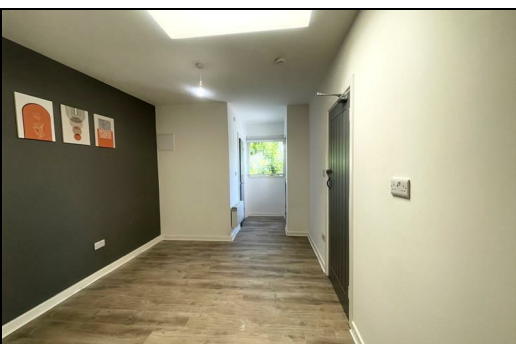
Water bills and council tax are included in the rent, making for hassle-free living. The property is ideally located within easy reach of Medway Hospital, the train station, and excellent motorway links, offering both comfort and connectivity.


Call now to view these before they all get snapped up! 01634 570057


CR Real Estate are part The Ombudsman Redress Scheme and are a member of the Propertymark Client Money Protection Scheme. Tenant deposits are protected by the Tenancy Deposit Scheme. For more information, please contact us.

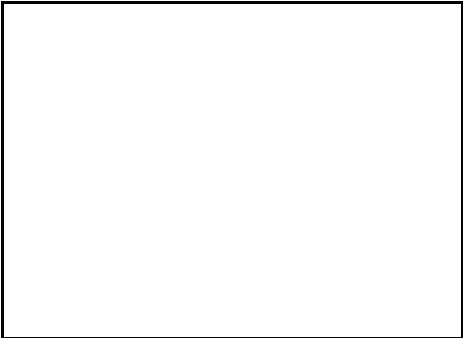
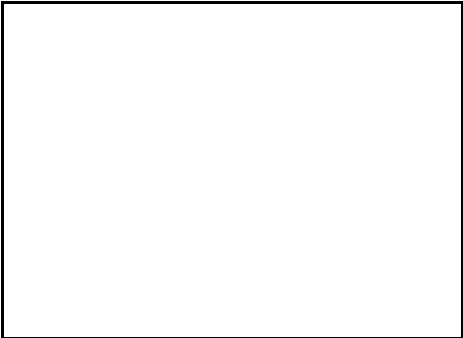
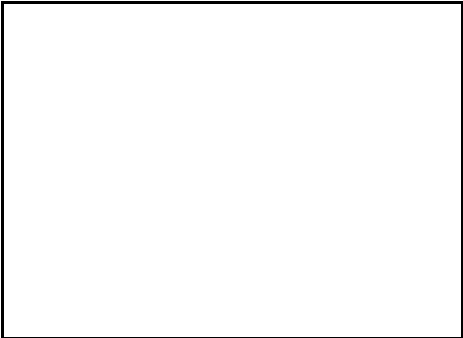
Client Money Protection is provided by: Client Money Protect. Scheme Ref: CMP004209

Independent redress is provided by: The Property Ombudsman (TPO). Membership Number: E01687



Energy Efficiency Rating		
	Current	Potential
Very energy efficient - lower running costs		
(92 plus) A		
(81-91) B		
(69-80) C		
(55-68) D		
(39-54) E		
(21-38) F		
(1-20) G		
Not energy efficient - higher running costs		
England & Wales EU Directive 2002/91/EC 		

Environmental Impact (CO ₂) Rating		
	Current	Potential
Very environmentally friendly - lower CO2 emissions		
(92 plus) A		
(81-91) B		
(69-80) C		
(55-68) D		
(39-54) E		
(21-38) F		
(1-20) G		
Not environmentally friendly - higher CO2 emissions		
England & Wales EU Directive 2002/91/EC 		



ESTATE AGENCY : REDEFINED

