



Corporation Road
Gillingham | ME7 1RQ



Corporation Road , Gillingham, ME7 1RQ

Being Sold via Secure Sale. Terms & Conditions Apply.
Starting offers £145,000.

Two-Bedroom Terraced House with Great Potential – No
Onward Chain

Located just a short walk from the town centre, this two-bedroom terraced home offers a fantastic opportunity for buyers looking to put their own stamp on a property. In need of updating, the home provides generous living space and strong potential for improvement.

The ground floor features a spacious lounge, separate dining room, and a kitchen to the rear. Upstairs, you'll find two double bedrooms and a separate family bathroom. Outside, the property benefits from gardens to both the front and rear, ideal for outdoor relaxation or further landscaping. With no onward chain, this is an ideal purchase for investors, first-time buyers, or anyone seeking a project in a convenient location.

Auction Guide £145,000



Entrance Porch

Lounge

14'4 x 13'9 (4.37m x 4.19m)

Dining Room

14'4 x 9'11 (4.37m x 3.02m)

Kitchen

8'10 x 6'1 (2.69m x 1.85m)

Bedroom

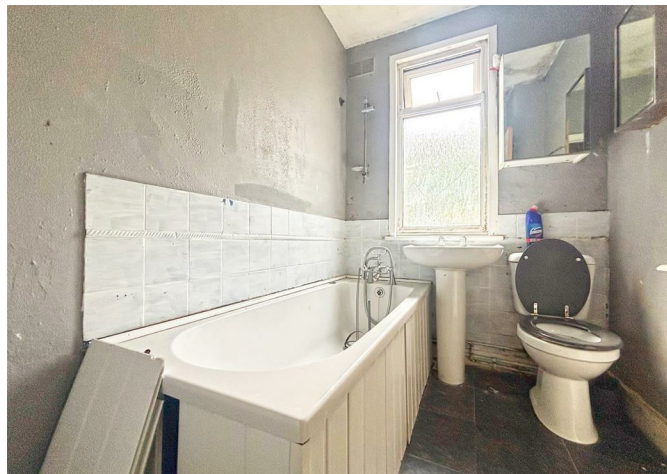
14'4 x 9'11 (4.37m x 3.02m)

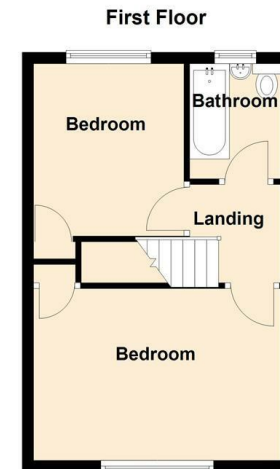
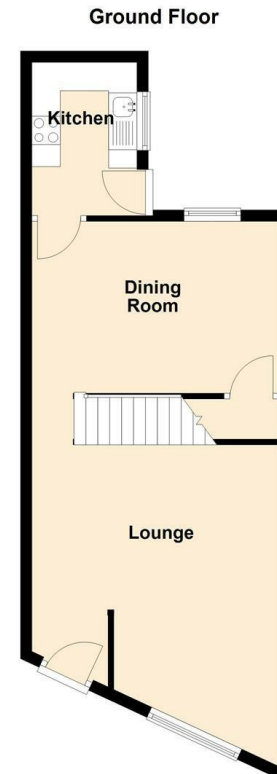
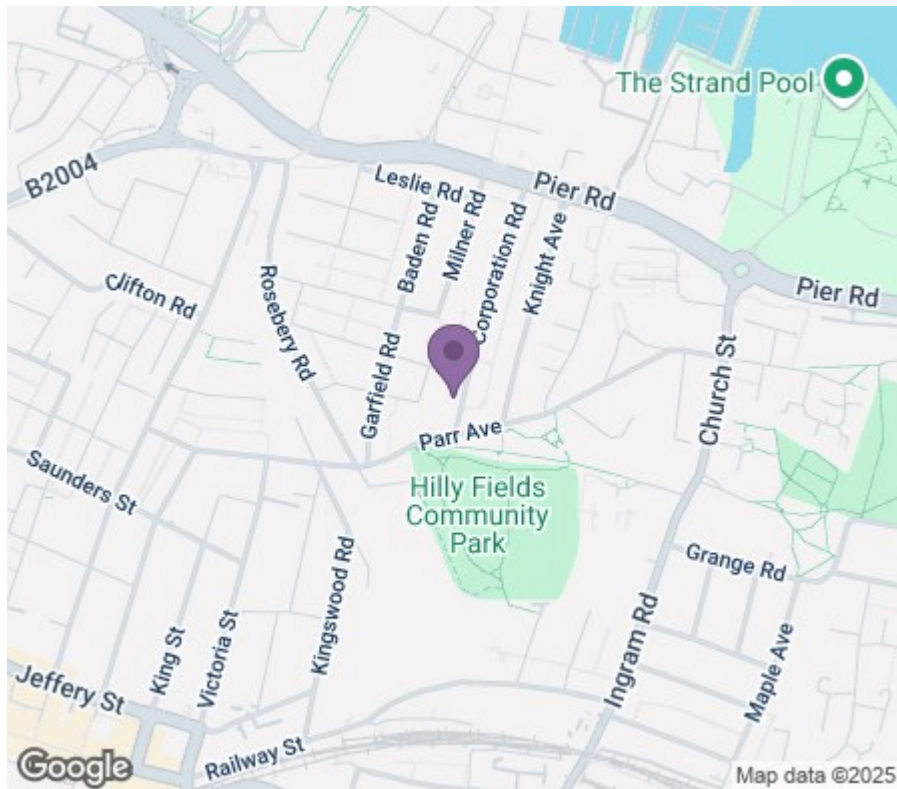
Bedroom

10'0 x 8'8 (3.05m x 2.64m)

Bathroom

6'8 x 5'5 (2.03m x 1.65m)





REAL ESTATE
ESTATE AGENCY : REDEFINED

18 - 20 High Street
Gillingham
Kent
ME7 1BB

01634 570057

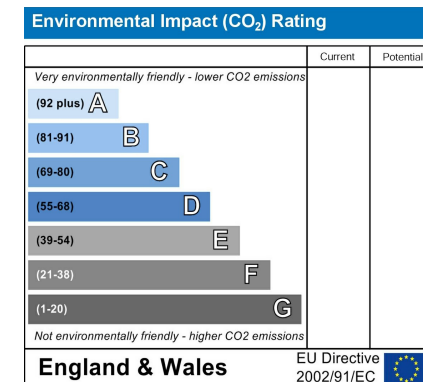
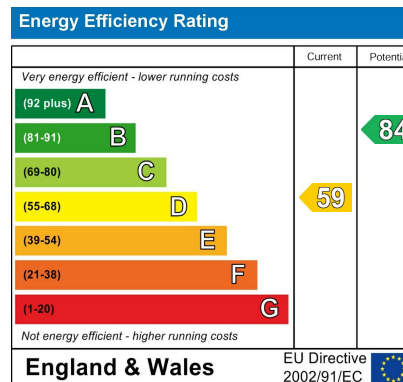
www.crralestate.co.uk

twitter.com/CRRealEstateUK

facebook.com/CRRealEstateUK



rightmove
find your happy



CR Real Estate endeavour to maintain accurate depictions of properties in Virtual Tours, Floor Plans and descriptions, however, these are intended only as a guide and purchasers must satisfy themselves by personal inspection.