



Pleasant Row, Gillingham ME7 5QY

£1,100 Per Calendar Month

CR Real Estate are delighted to offer this spacious Two Bedroom Second Floor Flat to let, located in the ever-popular Pleasant Row, Brompton, Gillingham.

Situated in a charming and convenient location, this well-presented property offers comfortable and practical living, ideal for couples, small families, or professional tenants.

The accommodation comprises a communal entrance hall with secure entry system and stairs leading to the second floor. Inside, the flat features two generously sized bedrooms, a bright and airy living room, a fitted kitchen with ample storage, and a modern bathroom.

Set within easy reach of local amenities, schools, and excellent transport links including Gillingham Train Station, this property provides both convenience and comfort in a sought-after residential area.

Key Features:

Two Good-Sized Bedrooms

Bright Living Area

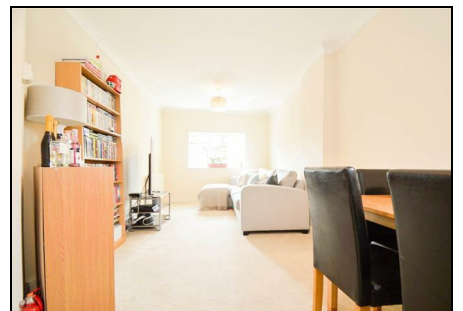
Fitted Kitchen


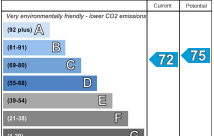
Modern Bathroom

Communal Entrance with Secure Entry

Excellent Location Close to Amenities and Transport Links

Don't miss the opportunity to make this charming flat your new home. Contact CR Real Estate today to arrange a viewing.



Energy Efficiency Rating		Environmental Impact (CO ₂) Rating	
Current	Potential	Current	Potential
			
England & Wales		England & Wales	