

Marlborough Road, Gillingham ME7 5HP

£3,000 Per Calendar Month

Spacious 5-Bedroom Property for Company Let | Overlooking Great Lines Park

CR Real Estate are pleased to offer this large 5-bedroom property, ideal for a company let. Perfectly positioned with direct views of the Great Lines Park, the property is just a short walk from Medway Hospital, the train station, main road links, and the local high street.

Internally, the property comprises five generously sized bedrooms, two shower rooms, a well-equipped kitchen, and a communal living area. The property is offered furnished and provides a comfortable and practical living space.

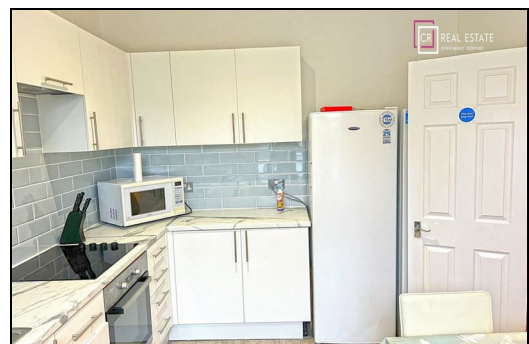
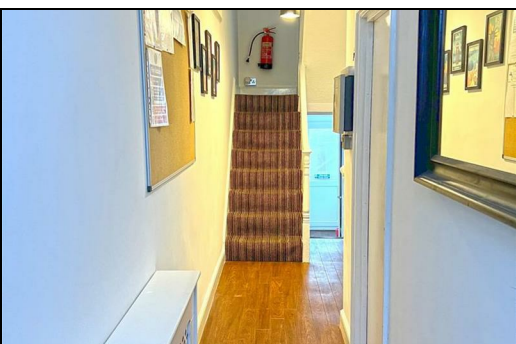
Please note: Rent excludes utility bills, council tax and broadband.

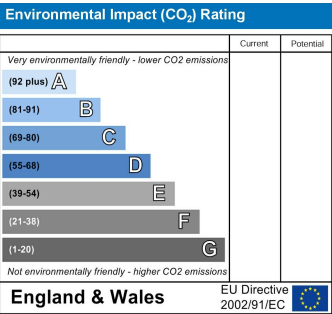
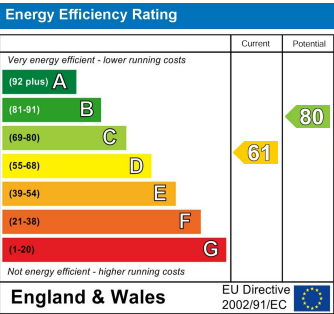
Contact CR Real Estate today to arrange a viewing or discuss your company's accommodation needs on 01634 570057.

CR Real Estate are part The Ombudsman Redress Scheme and are a member of the Propertymark Client Money Protection Scheme. Tenant deposits are protected by the Tenancy Deposit Scheme. For more information, please contact us.

Client Money Protection is provided by: Client Money Protect. Scheme Ref: CMP004209

Independent redress is provided by: The Property Ombudsman (TPO). Membership Number: E01687





ESTATE AGENCY : REDEFINED