



**Orchard Street**  
Gillingham | ME8 9EZ



# Orchard Street

## Rainham, Gillingham, ME8 9EZ

This bright and modern two double bedroom ground floor apartment is in a great spot, just a short walk from Rainham town centre. Inside, you'll find a spacious open-plan living area, perfect for relaxing or entertaining, plus two good-sized bedrooms – one with its own en suite shower room.

The decor is fresh and modern throughout, so you can move straight in and make it your own. You'll also have the bonus of allocated parking, and with everything close by – shops, cafes, and transport links – it's a super convenient place to call home.

Ideal for first-time buyers, downsizers, or anyone looking for low-maintenance living in a great location.

- Ground Floor Apartment
- Two Double Bedrooms
- Allocated Parking
- Close To Rainham Town Centre
- En Suite Shower Room
- Modern Decor Throughout

£230,000





Entrance Hall

Living Room

17'7 x 11'2 (5.36m x 3.40m)

Kitchen

7'11 x 7'10 (2.41m x 2.39m)

Bathroom

7'1 x 5'7 (2.16m x 1.70m)

Bedroom

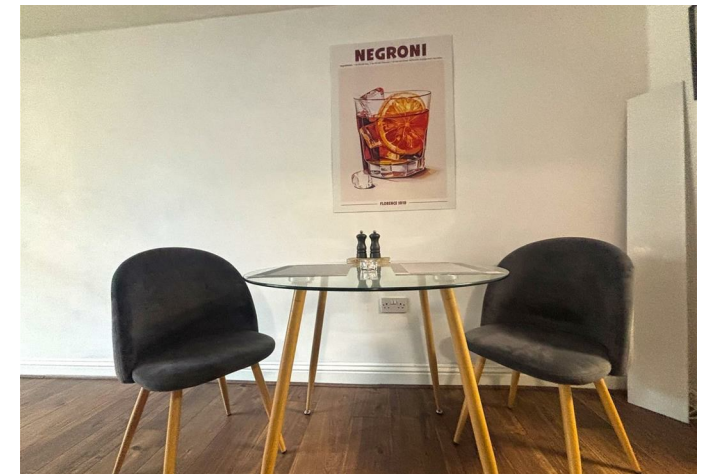
11'6 x 10'11 (3.51m x 3.33m)

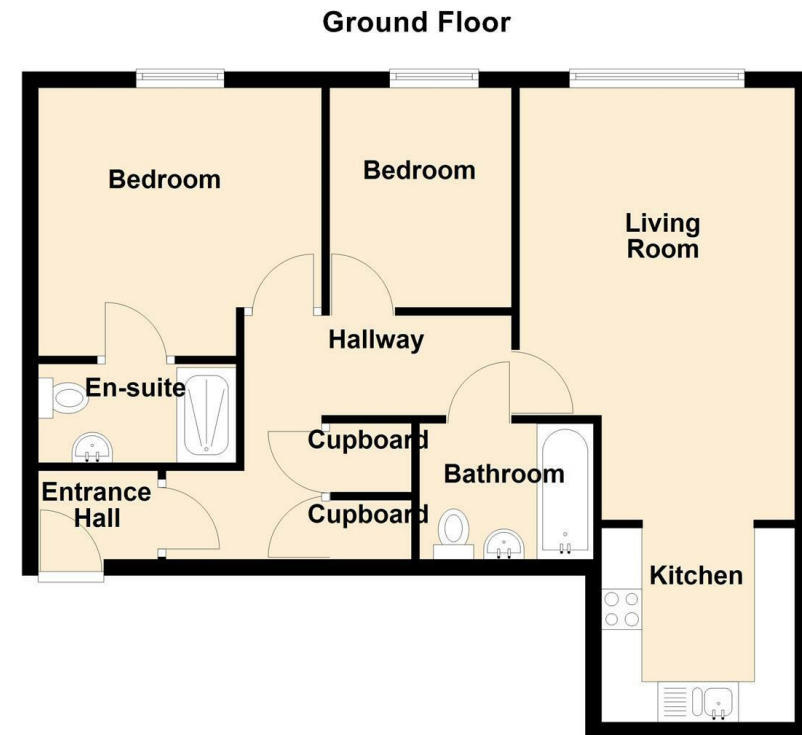
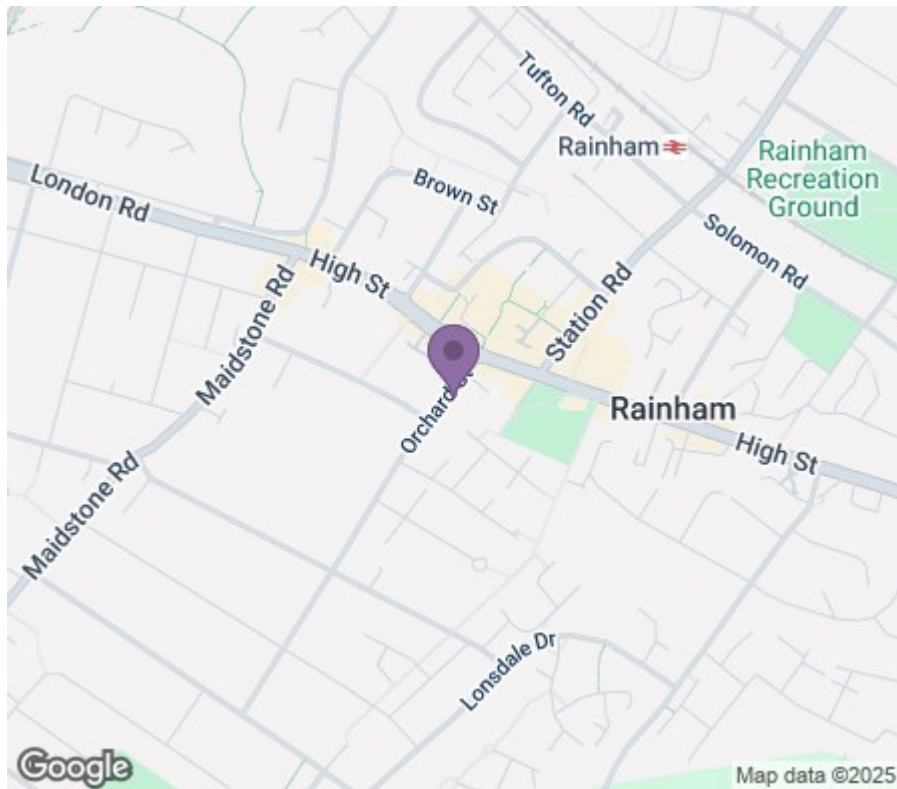
En Suite

8'1 x 4'0 (2.46m x 1.22m)

Bedroom

8'11 x 7'5 (2.72m x 2.26m)



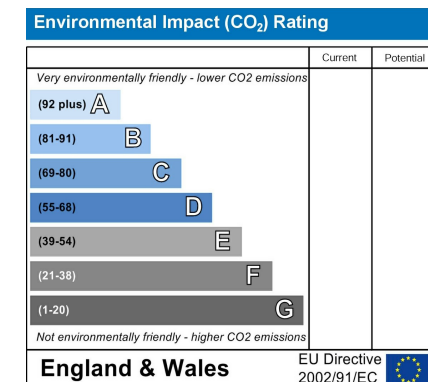
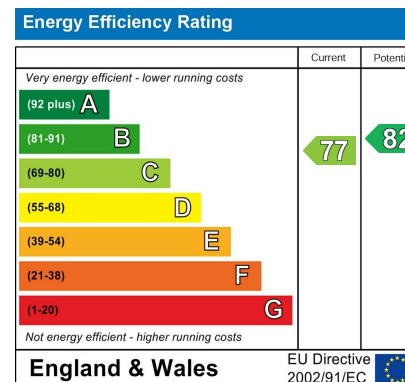


**REAL ESTATE**  
ESTATE AGENCY : REDEFINED

18 - 20 High Street  
Gillingham  
Kent  
ME7 1BB

**01634 570057**

[www.crralestate.co.uk](http://www.crralestate.co.uk)  
[twitter.com/CRRealEstateUK](https://twitter.com/CRRealEstateUK)  
[facebook.com/CRRealEstateUK](https://facebook.com/CRRealEstateUK)



CR Real Estate endeavour to maintain accurate depictions of properties in Virtual Tours, Floor Plans and descriptions, however, these are intended only as a guide and purchasers must satisfy themselves by personal inspection.