



Dane Close

Sittingbourne | ME9 7TN



REAL ESTATE
ESTATE AGENCY : REDEFINED

Dane Close

Hartlip, Sittingbourne, ME9 7TN

Set within the picturesque rural village of Hartlip, this exceptional five-bedroom detached home offers the perfect blend of countryside charm and contemporary comfort.

Positioned on a generous plot and spanning over 2,500sq, including a spacious double garage, this property provides a rare opportunity for families seeking space, style, and tranquillity.

Enjoy uninterrupted views across rolling fields and orchards, offering a daily reminder of the beauty of village life. At the heart of the home lies an impressive open-plan kitchen/dining area, ideal for family living and entertaining, complemented by a separate utility room and cloakroom for added convenience.

Upstairs, four generously sized bedrooms provide flexible accommodation, including a superb master suite complete with ensuite bathroom. A fifth bedroom is located on the ground floor, making it perfect for guests or as an additional reception room. A dedicated garden office makes working from home both practical and inspiring, with serene views enhancing focus and wellbeing.

Outside, the expansive driveway offers ample off-street parking, while the beautifully maintained gardens wrap around the home, creating a peaceful setting for relaxation or play.

Located within walking distance of the village school and the local pub, this long-term family home offers the best of both worlds, rural seclusion with excellent local amenities close at hand.

Viewing is highly recommended to appreciate the lifestyle this wonderful property has to offer

Offers Over £900,000



Entrance Hall

Lounge

18'11 x 12'1 (5.77m x 3.68m)

Dining Room

21'2 x 13'10 (6.45m x 4.22m)

Kitchen/Breakfast Room

22'7 x 17'2 (6.88m x 5.23m)

Utility Room

12'1 x 6'6 (3.68m x 1.98m)

Cloakroom/WC

Bedroom/Study

9'10 x 8'6 (3.00m x 2.59m)

Bedroom

13'11 x 13'9 (4.24m x 4.19m)

En Suite

Bedroom

16'5 x 14'3 (5.00m x 4.34m)

Bedroom

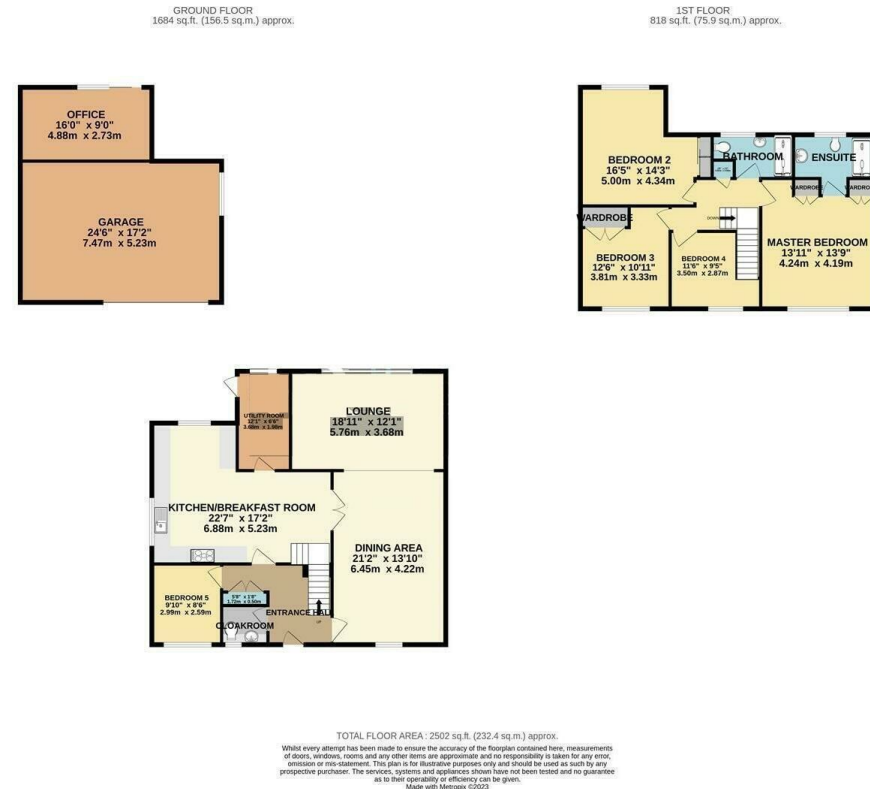
12'6 x 10'11 (3.81m x 3.33m)

Bedroom

11'5 x 9'5 (3.48m x 2.87m)

Bathroom





REAL ESTATE
ESTATE AGENCY : REDEFINED

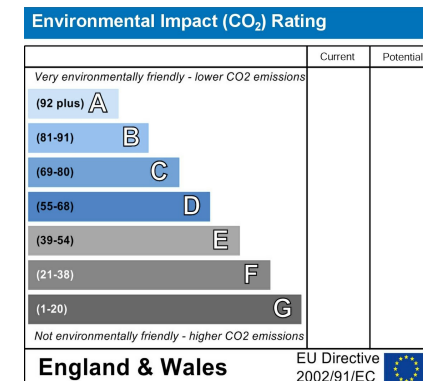
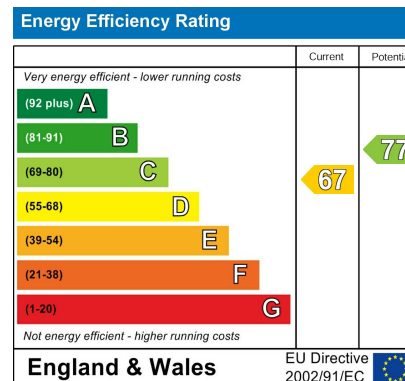
18 - 20 High Street
Gillingham
Kent
ME7 1BB

01634 570057

www.crralestate.co.uk
twitter.com/CRRRealEstateUK
facebook.com/CRRRealEstateUK



rightmove
find your happy



CR Real Estate endeavour to maintain accurate depictions of properties in Virtual Tours, Floor Plans and descriptions, however, these are intended only as a guide and purchasers must satisfy themselves by personal inspection.