



REAL ESTATE

ESTATE AGENCY : REDEFINED



## Old Castle Walk, Gillingham ME8 9TZ

**£1,200 Per Calendar Month**

This beautifully finished 2-bedroom flat offers modern, comfortable living in a highly convenient setting. Inside, you'll find two generous double bedrooms, a spacious open-plan living and dining area, and a sleek, fully fitted kitchen complete with an integrated hob, oven, washing machine, and fridge freezer – perfect for easy, everyday living.

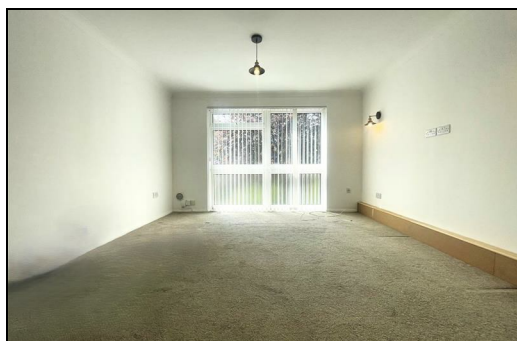
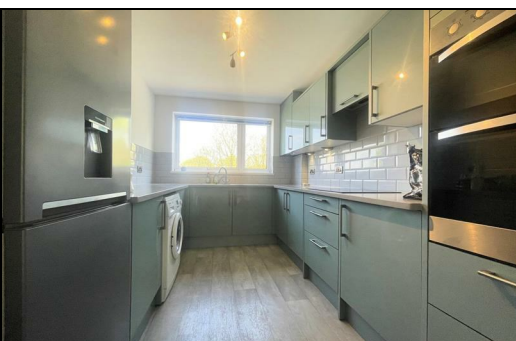
Set in a popular and well-connected area, the property is just minutes from local shops, schools, parks, and excellent transport links, including quick access to Rainham town centre and the train station. Ideal for commuters, professionals, or small families seeking a stylish home with everything close by.

Available to move into from May — early viewing is highly recommended to avoid disappointment!


CR Real Estate are part The Ombudsman Redress Scheme and are a member of the Propertymark Client Money Protection Scheme. Tenant deposits are protected by the Tenancy Deposit Scheme. For more information, please contact us.


Client Money Protection is provided by: Client Money Protect. Scheme Ref: CMP004209

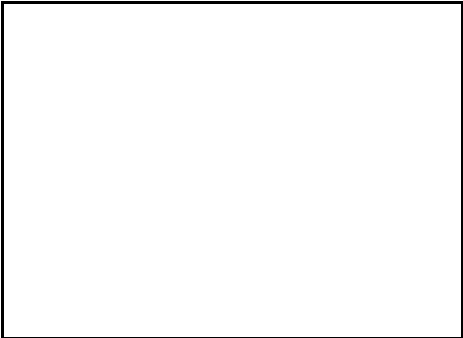
Independent redress is provided by: The Property Ombudsman (TPO). Membership Number: E01687





Energy Efficiency Rating		
	Current	Potential
Very energy efficient - lower running costs		
(92 plus) <b>A</b>		
(81-91) <b>B</b>		
(69-80) <b>C</b>		
(55-68) <b>D</b>		
(39-54) <b>E</b>		
(21-38) <b>F</b>		
(1-20) <b>G</b>		
Not energy efficient - higher running costs		
<b>England &amp; Wales</b>	EU Directive 2002/91/EC	

Environmental Impact (CO <sub>2</sub> ) Rating		
	Current	Potential
Very environmentally friendly - lower CO2 emissions		
(92 plus) <b>A</b>		
(81-91) <b>B</b>		
(69-80) <b>C</b>		
(55-68) <b>D</b>		
(39-54) <b>E</b>		
(21-38) <b>F</b>		
(1-20) <b>G</b>		
Not environmentally friendly - higher CO2 emissions		
<b>England &amp; Wales</b>	EU Directive 2002/91/EC	



ESTATE AGENCY : REDEFINED