



REAL ESTATE

ESTATE AGENCY : REDEFINED



Compton Close, Chatham ME5 8SF

£1,025 Per Calendar Month

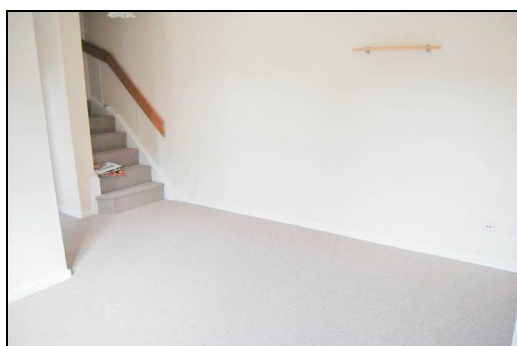
CR REAL ESTATE are pleased to offer this one bedroom home to rent in LORDSWOOD, available with ZERO DEPOSIT OPTION. This property is a perfect starter home, and comes with allocated parking, entrance hall, lounge, kitchen, bathroom and double bedroom.

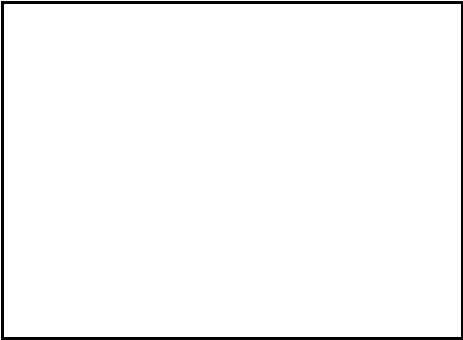
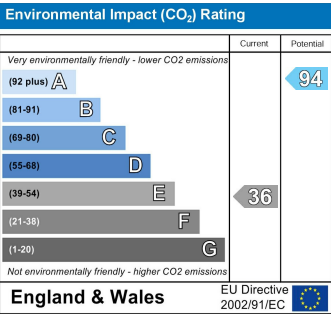
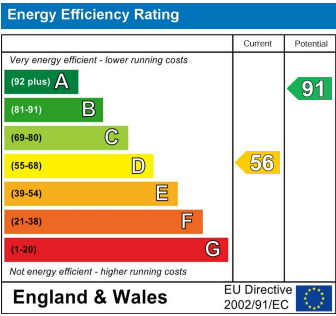
EPC RATING D

COUNCIL TAX BAND B

HOLDING DEPOSIT £242.00

CR Real Estate are part The Ombudsman Redress Scheme and are a member of the Propertymark Client Money Protection Scheme. Tenant deposits are protected by the Tenancy Deposit Scheme. For more information, please contact us. Client Money Protection is provided by: Client Money Protect. Scheme Ref: CMP004209
Independent redress is provided by: The Property Ombudsman (TPO). Membership Number: E01687





ESTATE AGENCY : REDEFINED