



Bond Lane, Ashford TN23 3ES

Guide Price £1,600,000

For sale via secure sale online bidding: terms and conditions apply.

Stunning 5-Bedroom Detached Family Home with Development Potential, Kingsnorth, Ashford

Set on just under 2 acres of land in a highly sought-after semi-rural location, this beautifully presented 5-bedroom detached family home offers the perfect blend of character, space, and opportunity.

This versatile property is rich with original features, including high ceilings and charming period touches throughout. The heart of the home is a stunning open-plan kitchen and family room, designed for modern living and ideal for entertaining.

Outside, the expansive grounds offer development potential, subject to planning permission, in an area where new-build developments are actively encouraged, making this not only a wonderful home but also a rare investment opportunity.

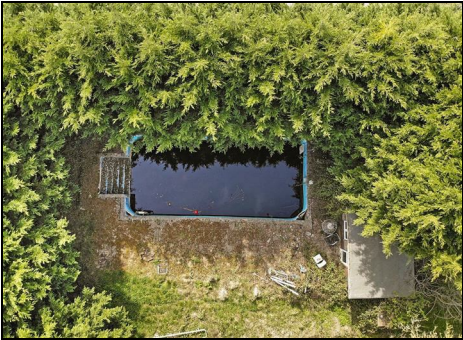
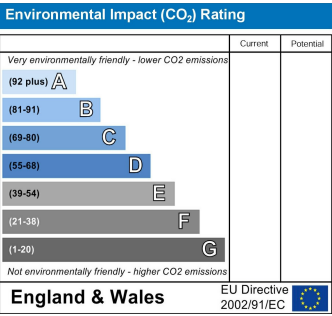
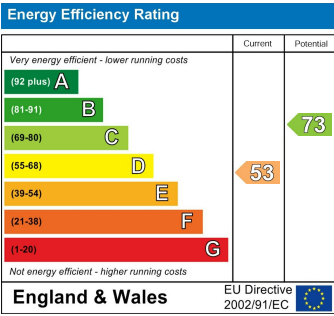
Additional features include:

- A separate barn, perfect for use as a garage, workshop, or additional storage
- An outdoor swimming pool in need of updating, offering scope for a beautiful leisure space
- Ample parking and privacy, surrounded by mature trees and countryside views

Located in Kingsnorth, Ashford, this property enjoys a peaceful setting with easy access to local amenities, schools, and excellent transport links—including high-speed rail to London.

Whether you're looking for a forever family home, a development opportunity, or both—this property ticks all the boxes.





ESTATE AGENCY : REDEFINED

