



REAL ESTATE
ESTATE AGENCY : REDEFINED



Bridge Road, Gillingham ME7 1NP

£1,475 Per Calendar Month

Nestled on the charming Bridge Road in Gillingham, this delightful mid-terrace house presents an excellent home for families seeking a comfortable and inviting home. Boasting three well-proportioned bedrooms, this property is perfect for those looking to settle down in a friendly neighbourhood.

Upon entering, you will find two spacious reception rooms, a modern fitted kitchen, and downstairs bathroom. Upstairs you will find three good size bedroom with storage space. There is also a garden to the front and rear of the property.

Available for immediate occupancy, this home is situated in a great location, close to local amenities, schools, and transport links, making it an ideal choice for families and professionals alike. With its blend of space, comfort, and accessibility, this three-bedroom family home on Bridge Road is not to be missed.

CR Real Estate are part The Ombudsman Redress Scheme and are a member of the Propertymark Client Money Protection Scheme. Tenant deposits are protected by the Tenancy Deposit Scheme. For more information, please contact us.

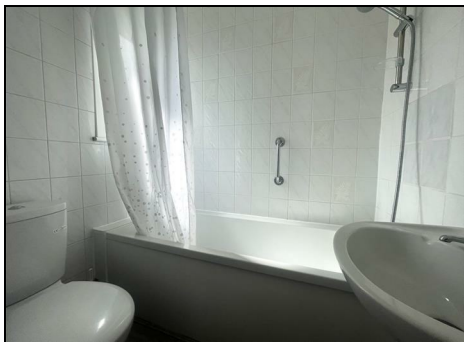
Client Money Protection is provided by: Client Money Protect. Scheme Ref: CMP004209

Independent redress is provided by: The Property Ombudsman (TPO). Membership Number: E01687



Energy Efficiency Rating		Current	Potential
Very energy efficient - lower running costs			
(92 plus) A			
(81-91) B			
(69-80) C			
(55-68) D			
(39-54) E			
(21-38) F			
(1-20) G			
Not energy efficient - higher running costs			
England & Wales		EU Directive 2002/91/EC	

Environmental Impact (CO ₂) Rating		Current	Potential
Very environmentally friendly - lower CO ₂ emissions			
(92 plus) A			
(81-91) B			
(69-80) C			
(55-68) D			
(39-54) E			
(21-38) F			
(1-20) G			
Not environmentally friendly - higher CO ₂ emissions			
England & Wales		EU Directive 2002/91/EC	



ESTATE AGENCY : REDEFINED

