



## Romney Road, Chatham ME5 7LU

### £1,600 Per Calendar Month

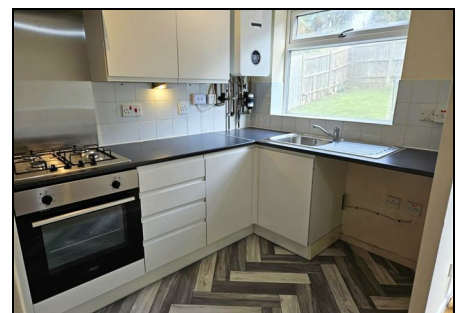
CR Real Estate are pleased to offer this three bedroom house for rent in Walderslade. Internally the ground floor offers a spacious open plan living area/dining room with a modern fitted kitchen. On the first floor the property offers 3 bedrooms and a family bathroom. The additional benefits also include a garage and driveway for two cars as well as a rear garden! This property is located within easy reach of local amenities, motorway links and popular primary schools. We are sure this property won't be around for long so call us now to book your viewings!

CR Real Estate are part The Ombudsman Redress Scheme and are a member of the Propertymark Client Money Protection Scheme. Tenant deposits are protected by the Tenancy Deposit Scheme. For more information, please contact us.

Client Money Protection is provided by: Client Money Protect. Scheme Ref: CMP004209

Independent redress is provided by: The Property Ombudsman (TPO). Membership Number: E01687

- GARAGE
- DRIVEWAY
- 3 BEDROOMS
- OPEN PLAN
- AVAILABLE NOW
- LOCAL AMENITIES
- HOLDING DEPOSIT £369
- EPC RATING D
- COUNCIL TAX BAND C
- FLOOR PLAN COMING SOON



Energy Efficiency Rating		Current	Potential
Very energy efficient - lower running costs			
(92-101) <b>A</b>			
(81-91) <b>B</b>			
(69-80) <b>C</b>			
(55-68) <b>D</b>			
(39-54) <b>E</b>			
(21-38) <b>F</b>			
(1-20) <b>G</b>			
Not energy efficient - higher running costs			
England & Wales		EU Directive 2002/91/EC	

Environmental Impact (CO <sub>2</sub> ) Rating		Current	Potential
Very environmentally friendly - lower CO <sub>2</sub> emissions			
(92-101) <b>A</b>			
(81-91) <b>B</b>			
(69-80) <b>C</b>			
(55-68) <b>D</b>			
(39-54) <b>E</b>			
(21-38) <b>F</b>			
(1-20) <b>G</b>			
Not environmentally friendly - higher CO <sub>2</sub> emissions			
England & Wales		EU Directive 2002/91/EC	