



North Lane, Canterbury CT2 7EB

£1,200 Per Calendar Month

Located in the heart of historic Canterbury, available to rent is this recently refurbished two bedroom cottage on North Lane. Properties in the area are rarely available for long and as such an early call is strongly advised to avoid disappointment! Small Courtyard Garden.

Measurements

Lounge 11'2 x 11'7

Dining Room 11'2 x 11'6

Kitchen 15'6 x 5'6

Bedroom 11'7 x 13'11

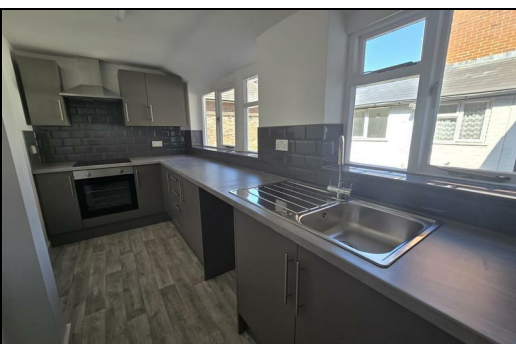
Bedroom 7'3 x 12'8


Bathroom 4'11 x 8'10


CR Real Estate are part The Ombudsman Redress Scheme and are a member of the Propertymark Client Money Protection Scheme. Tenant deposits are protected by the Tenancy Deposit Scheme. For more information, please contact us.

Client Money Protection is provided by: Client Money Protect. Scheme Ref: CMP004209

Independent redress is provided by: The Property Ombudsman (TPO). Membership Number: E01687



Energy Efficiency Rating		
	Current	Potential
Very energy efficient - lower running costs		
(92 plus) A		
(81-91) B		
(69-80) C		
(55-68) D		
(39-54) E		
(21-38) F		
(1-20) G		
Not energy efficient - higher running costs		
England & Wales EU Directive 2002/91/EC 		

Environmental Impact (CO ₂) Rating		
	Current	Potential
Very environmentally friendly - lower CO2 emissions		
(92 plus) A		
(81-91) B		
(69-80) C		
(55-68) D		
(39-54) E		
(21-38) F		
(1-20) G		
Not environmentally friendly - higher CO2 emissions		
England & Wales EU Directive 2002/91/EC 		



ESTATE AGENCY : REDEFINED

