



Charter Street

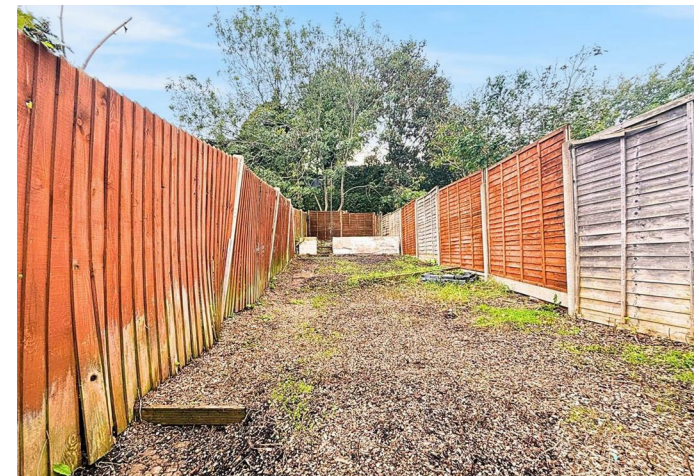
Chatham | ME4 5RZ

Charter Street , Chatham, ME4 5RZ

CR Real Estate are delighted to offer for sale this two bedroom property that has been refurbished throughout. Situated a short walk to Chatham Town Centre we feel this would be a great first time buy or buy to let investment. Internal benefits include a lounge, separate dining area, modern fitted kitchen and utility area to the ground floor. The first floor has Two double bedrooms and a separate family bathroom. Externally there is a great size garden to the rear. Call us now to view.

- Two Bedroom Terrace
- Recently Refurbished
- Close To Town Centre
- Utility Room
- No Onward Chain
- New Kitchen & Bathroom
- Rear Garden
- Call Now To View

£210,000



Lounge

12'0 x 9'6 (3.66m x 2.90m)

Dining Room

12'0 x 9'7 (3.66m x 2.92m)

Kitchen

9'4 x 6'1 (2.84m x 1.85m)

Utility

5'7 x 5'3 (1.70m x 1.60m)

Bedroom

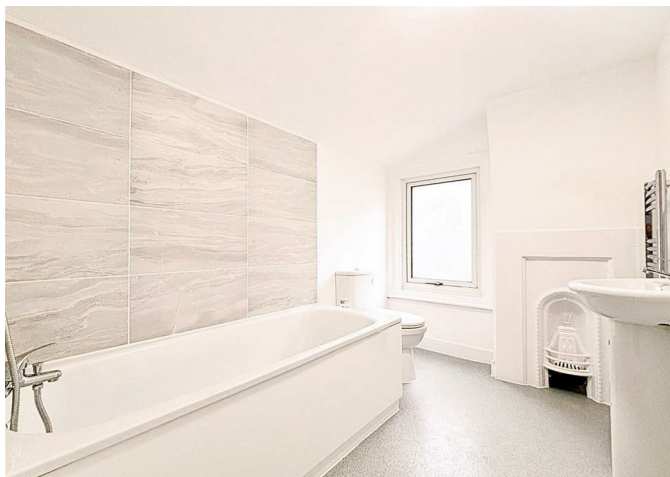
12'0 x 9'6 (3.66m x 2.90m)

Bedroom

12'0 x 9'7 (3.66m x 2.92m)

Bathroom

9'1 x 6'2 (2.77m x 1.88m)





Ground Floor
Approx. 32.8 sq. metres (353.0 sq. feet)



First Floor
Approx. 30.7 sq. metres (330.2 sq. feet)



Total area: approx. 63.5 sq. metres (683.3 sq. feet)



18 - 20 High Street
Gillingham
Kent
ME7 1BB

01634 570057

www.crr realestate.co.uk
twitter.com/CRRealEstateUK
facebook.com/CRRealEstateUK



| Energy Efficiency Rating | | Current | Potential |
|---|--|-------------------------|-----------|
| Very energy efficient - lower running costs | | | |
| (92 plus) A | | | 86 |
| (81-91) B | | | |
| (69-80) C | | | |
| (55-68) D | | 59 | |
| (39-54) E | | | |
| (21-38) F | | | |
| (1-20) G | | | |
| Not energy efficient - higher running costs | | | |
| England & Wales | | EU Directive 2002/91/EC | |

| Environmental Impact (CO ₂) Rating | | Current | Potential |
|---|--|-------------------------|-----------|
| Very environmentally friendly - lower CO ₂ emissions | | | |
| (92 plus) A | | | |
| (81-91) B | | | |
| (69-80) C | | | |
| (55-68) D | | | |
| (39-54) E | | | |
| (21-38) F | | | |
| (1-20) G | | | |
| Not environmentally friendly - higher CO ₂ emissions | | | |
| England & Wales | | EU Directive 2002/91/EC | |

CR Real Estate endeavour to maintain accurate depictions of properties in Virtual Tours, Floor Plans and descriptions, however, these are intended only as a guide and purchasers must satisfy themselves by personal inspection.