



## Canterbury Street, Gillingham ME7 5XR

**£600 Per Calendar Month**

DOUBLE ROOM TO LET. Shared house two rooms available. Refurbishment currently taking place available to move into by end August. Council tax, broadband and water included in the rent. Electricity and gas paid by tenants (key and card top up meters). Furnished. Upper Gillingham location.

### Measurements:

Bedroom 2.96m x 3.86m

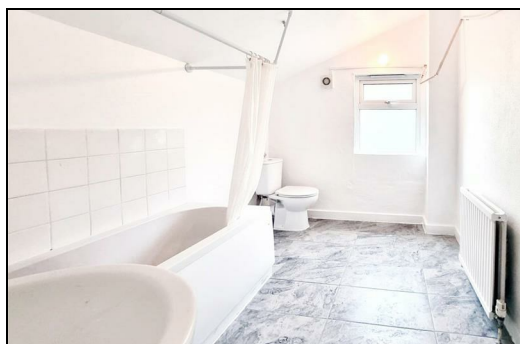
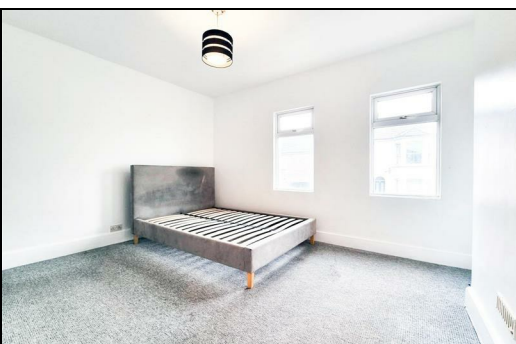
Bathroom 2.16m x 2.78m

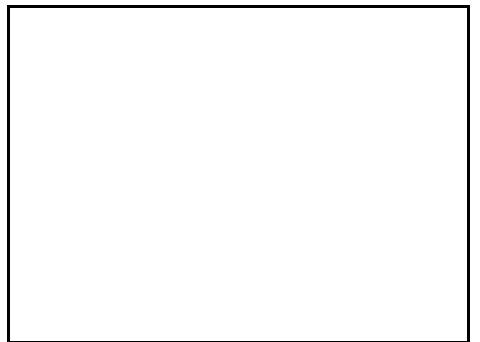
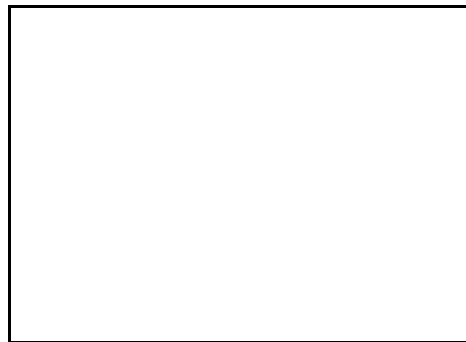
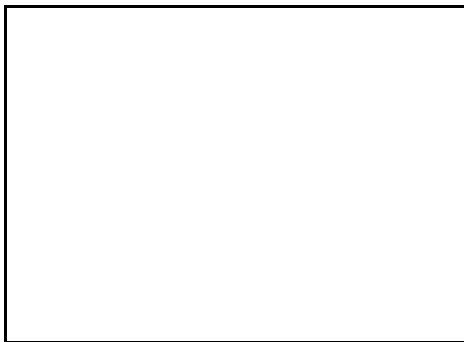
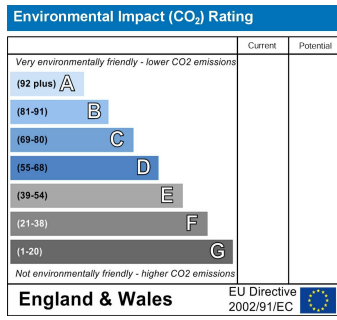
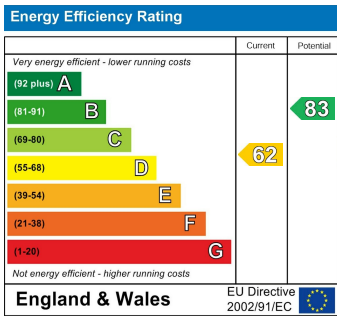
Kitchen 2.16m x 2.80m

CR Real Estate are part The Ombudsman Redress Scheme and are a member of the Propertymark Client Money Protection Scheme. Tenant deposits are protected by the Tenancy Deposit Scheme. For more information, please contact us.

Client Money Protection is provided by: Client Money Protect. Scheme Ref: CMP004209

Independent redress is provided by: The Property Ombudsman (TPO). Membership Number: E01687





**ESTATE AGENCY : REDEFINED**

