



Strover Street, Gillingham ME7 1JD

£500 Per Calendar Month

DOUBLE BEDROOM TO RENT IN SHARED HOUSE AVAILABLE NOW. Including bills and broadband. Cleaner weekly for communal areas. The property includes double bedroom, use of two showers rooms, lounge, kitchen, utility room and small rear garden.

Measurements:

Bedroom 2.45m x 3.35m

Shower room one 1.75m x 2.34m

Shower room two 1.70m x 2.70m

Lounge 3.37m x 3.47m

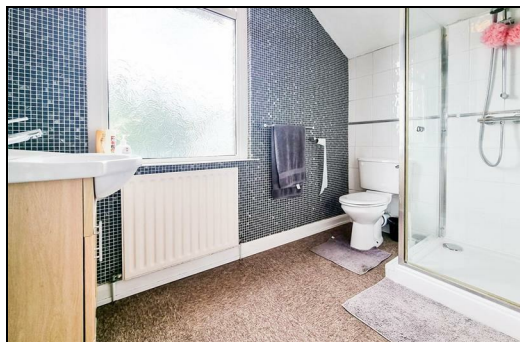
Kitchen 2.69m x 2.44m

Laundry room 2.70m x 1.64m

CR Real Estate are part The Ombudsman Redress Scheme and are a member of the Propertymark Client Money Protection Scheme. Tenant deposits are protected by the Tenancy Deposit Scheme. For more information, please contact us.

Client Money Protection is provided by: Client Money Protect. Scheme Ref: CMP004209

Independent redress is provided by: The Property Ombudsman (TPO). Membership Number: E01687



Energy Efficiency Rating		Current	Potential
Very energy efficient - lower running costs			
(92 plus) A			89
(81-91) B			
(69-80) C			
(55-68) D			
(39-54) E		67	
(21-38) F			
(1-20) G			
Not energy efficient - higher running costs			
England & Wales		EU Directive 2002/91/EC	

Environmental Impact (CO ₂) Rating		Current	Potential
Very environmentally friendly - lower CO ₂ emissions			
(92 plus) A			
(81-91) B			
(69-80) C			
(55-68) D			
(39-54) E			
(21-38) F			
(1-20) G			
Not environmentally friendly - higher CO ₂ emissions			
England & Wales		EU Directive 2002/91/EC	



ESTATE AGENCY : REDEFINED

