



Watling Street, Gillingham ME7 2YS

£575 Per Calendar Month

One bedroom room to rent located on Watling Street in the town of Gillingham. This delightful room offers a comfortable living space, perfect for those seeking a convenient and affordable accommodation option.

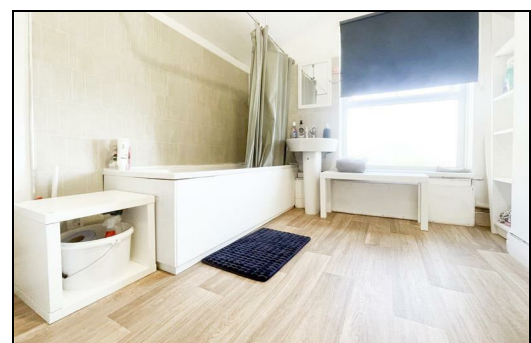
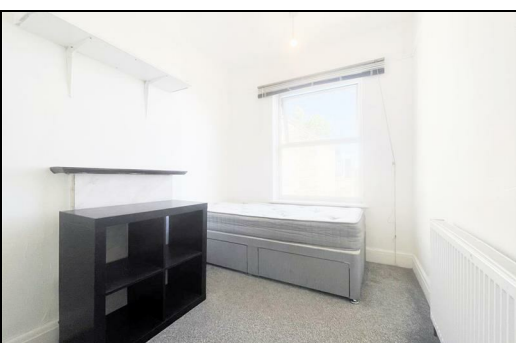
The room comes fully furnished, saving you the hassle of furnishing it yourself. The shared kitchen is equipped with all the necessary appliances. (cooker, fridge freezer, washing machine). The bills are also included in the rent!

Located in an excellent location, this room offers easy walking access to local amenities and transport links. Contact us today to arrange a viewing and take the first step towards comfortable and convenient living in Gillingham.

CR Real Estate are part The Ombudsman Redress Scheme and are a member of the Propertymark Client Money Protection Scheme. Tenant deposits are protected by the Tenancy Deposit Scheme. For more information, please contact us.

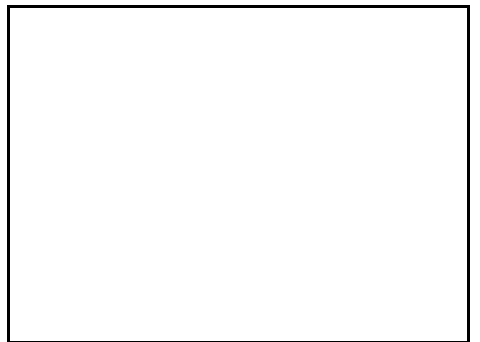
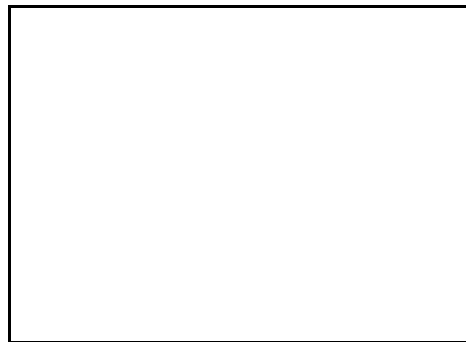
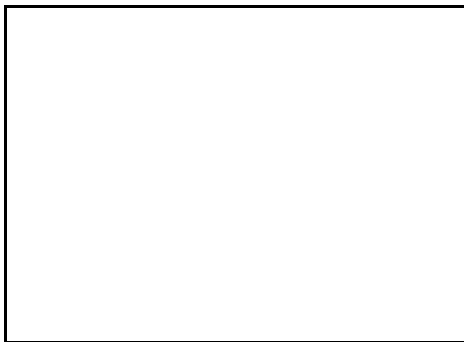
Client Money Protection is provided by: Client Money Protect. Scheme Ref: CMP004209

Independent redress is provided by: The Property Ombudsman (TPO). Membership Number: E01687



| Energy Efficiency Rating | | |
|---|----------------------------|-----------|
| | Current | Potential |
| Very energy efficient - lower running costs | | |
| (92 plus) A | | |
| (81-91) B | | |
| (69-80) C | | |
| (55-68) D | | |
| (39-54) E | | |
| (21-38) F | | |
| (1-20) G | | |
| Not energy efficient - higher running costs | | |
| England & Wales | EU Directive 2002/91/EC | |

| Environmental Impact (CO ₂) Rating | | |
|---|----------------------------|-----------|
| | Current | Potential |
| Very environmentally friendly - lower CO ₂ emissions | | |
| (92 plus) A | | |
| (81-91) B | | |
| (69-80) C | | |
| (55-68) D | | |
| (39-54) E | | |
| (21-38) F | | |
| (1-20) G | | |
| Not environmentally friendly - higher CO ₂ emissions | | |
| England & Wales | EU Directive 2002/91/EC | |



ESTATE AGENCY : REDEFINED

