



Conway Mews
Gillingham | ME7 5BD



Conway Mews

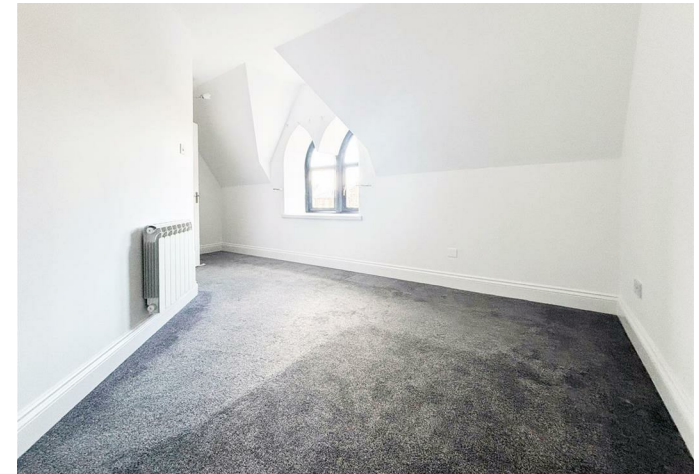
Brompton, Gillingham, ME7 5BD

Attention Buy-To-Let investors, tenant in residence.
Earn a yield of 7.4% from day 1!

Nestled within the charming village of Brompton, Conway Mews presents a well-presented one-bedroom apartment, for sale with no onward chain. This apartment is part of a converted school building, which seamlessly blends historical charm with modern convenience. The apartment retains some of its original features, including stunning windows that add character and elegance to the living space.

Inside, the apartment has been thoughtfully updated, and includes a modern fitted kitchen/lounge, bathroom, and generously sized bedroom with ample storage. Additionally, you will also benefit from an allocated parking space.

£160,000



Entrance Hall

Bedroom

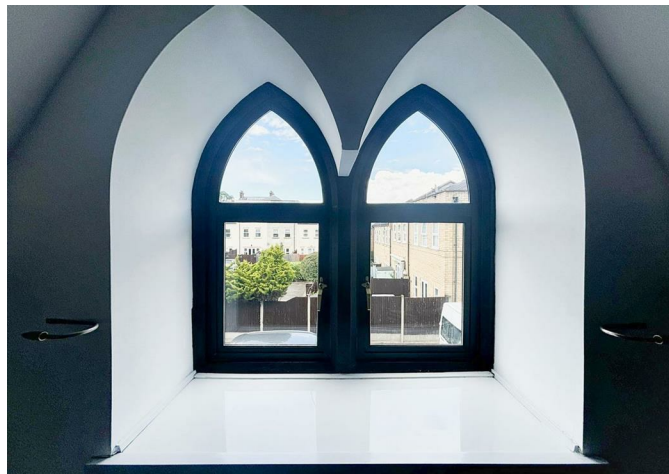
17'5 x 10'9 (5.31m x 3.28m)

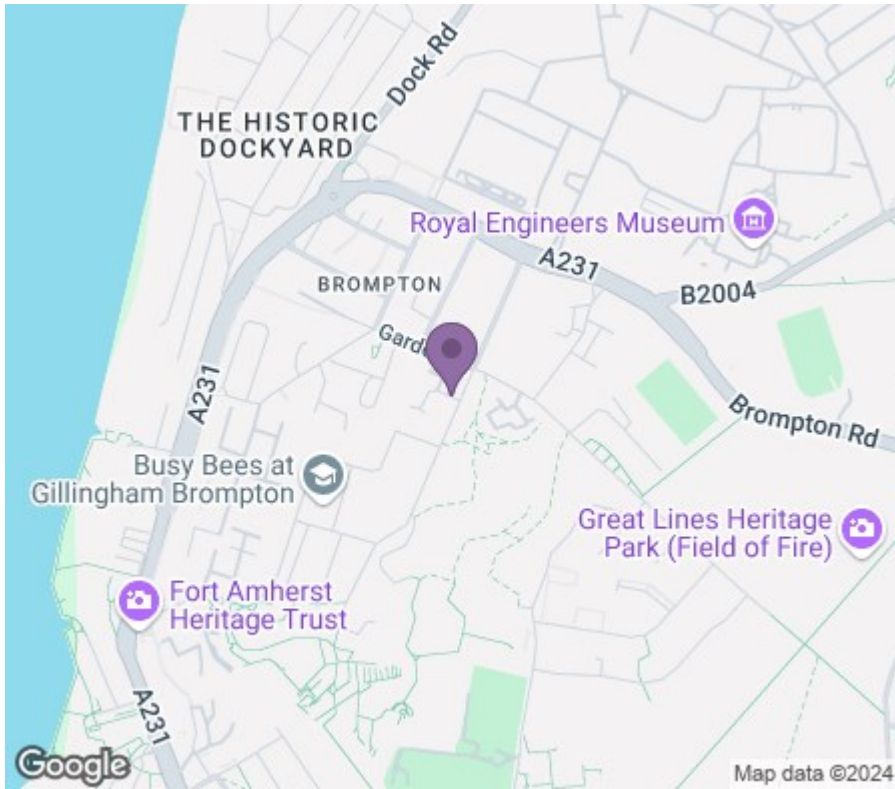
Family Bathroom

6'10 x 6'0 (2.08m x 1.83m)

Kitchen/Living Room

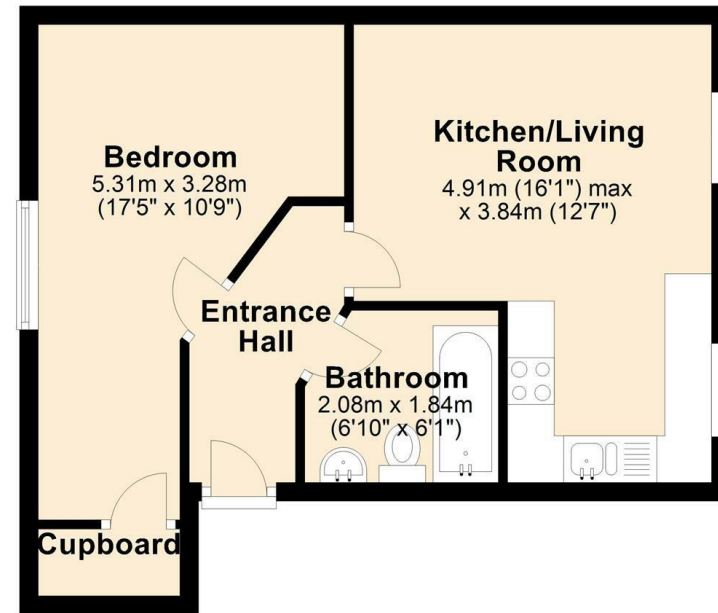
16'1 x 12'7 (4.90m x 3.84m)





First Floor

Approx. 37.3 sq. metres (401.5 sq. feet)



Total area: approx. 37.3 sq. metres (401.5 sq. feet)



18 - 20 High Street
Gillingham
Kent
ME7 1BB
01634 570057

www.crr realestate.co.uk
twitter.com/CRRealEstateUK
facebook.com/CRRealEstateUK



Energy Efficiency Rating		Current	Potential
Very energy efficient - lower running costs			
(92 plus) A			
(81-91) B			
(69-80) C			
(55-68) D			
(39-54) E			
(21-38) F			
(1-20) G			
Not energy efficient - higher running costs			
England & Wales		EU Directive 2002/91/EC	

Environmental Impact (CO ₂) Rating		Current	Potential
Very environmentally friendly - lower CO ₂ emissions			
(92 plus) A			
(81-91) B			
(69-80) C			
(55-68) D			
(39-54) E			
(21-38) F			
(1-20) G			
Not environmentally friendly - higher CO ₂ emissions			
England & Wales		EU Directive 2002/91/EC	

CR Real Estate endeavour to maintain accurate depictions of properties in Virtual Tours, Floor Plans and descriptions, however, these are intended only as a guide and purchasers must satisfy themselves by personal inspection.