



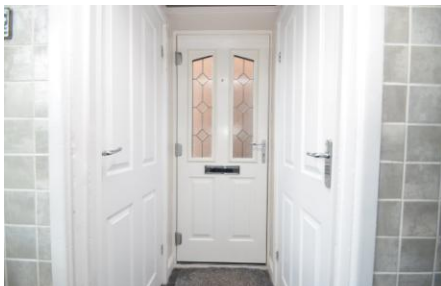
110 Lawford Lane

Bilton, Rugby, Warwickshire, CV22 7JT

Guide Price £260,000

Immaculate, EXTENDED, three bedroom, link detached property with block paved driveway, garage, and stunning BI-FOLDING DOORS opening onto the landscaped rear garden.

Refitted kitchen, lounge/diner, family room with bi-fold doors, modern downstairs shower room, refitted family bathroom, and three bedrooms.



Property Features

- Link Detached
- Extended
- Lounge/Diner
- Family Room With Bi-Fold Doors
- Refitted Kitchen
- Refitted Bathroom & Ground Floor Shower Room
- Three Bedrooms
- Landscaped Rear Garden
- Driveway & Garage
- IMMACULATELY Presented

Full Description

This superb link detached property has been extended and fully refurbished by the current owners to create a stylish and versatile living space.

Conveniently located on Lawford Lane in Bilton, in close proximity to a wide range of shops, amenities, schooling for all ages, and excellent transport links.

The property boasts a plot which includes a block paved driveway and garage to the front aspect, and a good sized landscaped garden with lawned, and patio areas to the rear aspect.

The immaculately presented living accommodation is spread across two floors, and comprises in brief of a stunning refitted kitchen, lounge/diner, family room with vaulted ceilings, velux skylights and bi-folding doors opening out onto the rear patio, and a modern shower room/guest wc on the ground floor.

The first floor features a landing area, three bedrooms, and a refitted family bathroom.

The property offers ready to move into accommodation, and further benefits from double glazing and gas central heating to radiators.

Viewing is highly recommended to fully appreciate all this property has to offer.

Ground Floor

Kitchen L:8" W:11'1"

Lounge/Diner L:21'9" W:14'3"

Family Room L:9'7" W:14'7"

Ground Floor Shower Room/Guest WC

Garage L:16'4" W:8'4"

First Floor

Landing

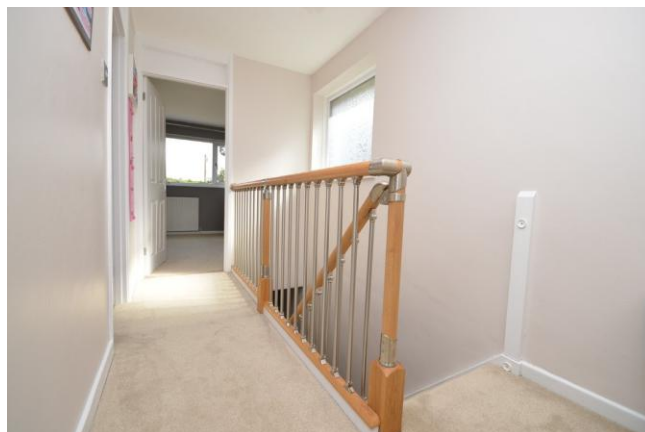
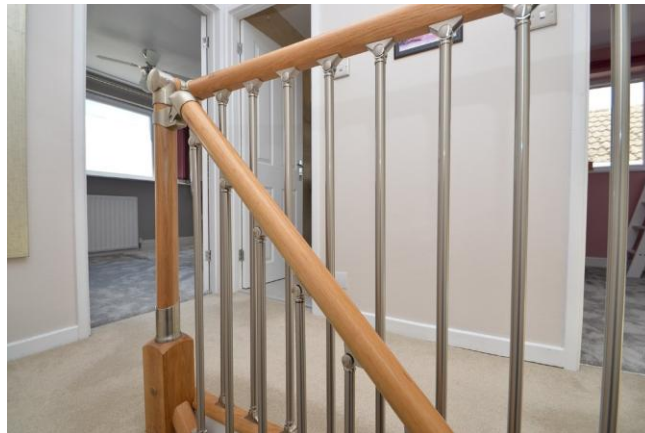
Bedroom One L:10'9" W:14'5"

Bedroom Two L:8'5" W:14'5"

Bedroom Three L:7'5" W:8'1"

Bathroom





Ground Floor



First Floor



Dimension approximate for display purposes only
Plan produced using PlanUp.

Lawford Lane, Rugby



6 The Green
Dunchurch
Rugby
Warwickshire
CV22 6NX

www.carterandking.co.uk
info@carterandking.co.uk
01788 550066

Agents Note: Whilst every care has been taken to prepare these sales particulars, they are for guidance purposes only. All measurements are approximate and for general guidance purposes only and whilst every care has been taken to ensure their accuracy, they should not be relied upon and potential buyers are advised to recheck the measurements.