

FOR SALE



Linwood Court, Northgate, Guisborough

2 Bedrooms, 1 Bathroom, Ground Floor Flat

Shared Ownership £80,000



Linwood Court, Northgate, Guisborough

2 Bedrooms, 1 Bathroom

Shared Ownership £80,000

- Retirement Apartment For Over 55s
- Ground Floor Apartment
- Two Bedrooms
- Shared Ownership 70%
- Close To Town Centre

FULL DESCRIPTION This purpose built self-contained ground floor apartment will appeal to retired individuals/couples seeking a secure home with worry free maintenance managed by Thirteen Group. This apartment is a shared ownership Leasehold Retirement Apartment for those aged 55 or over, 30% being vested in Thirteen Group. The price asked represents a 70% share. The apartment is situated close to Guisborough town Centre with its range of shopping facilities and amenities as well as transport links. The accommodation briefly comprises entrance hall, lounge, kitchen, shower room and two bedrooms. Externally there is a communal garden and allocated parking bay. Monthly service charge, of £89.64. Viewing highly recommended.

INTERNALLY

GROUND FLOOR

COMMUNAL STAIRWELL With access to all apartments and stairs to all other apartments.

APARTMENT

HALLWAY Entrance door, ceiling cornice, wall mounted electric radiator, telephone entry system, storage cupboard and carpet flooring.

LOUNGE To dual aspect. Ceiling cornice, textured ceiling, dado, carpet flooring, wall mounted electric radiator and two uPVC windows.

KITCHEN To rear aspect. Range of wall, base and drawer units with wood effect fascias, stainless steel inset sink unit, mixer tap, clad walls, laminate work surfaces, built in electric oven and hob, space for a fridge freezer and plumbing for a washing machine. Vinyl flooring, electric radiator, uPVC window and





uPVC door leading to rear.

to lawn with borders and paved pathway and patio area.

BEDROOM Built in wardrobes with sliding doors, carpet flooring, wall mounted electric radiator and uPVC window.

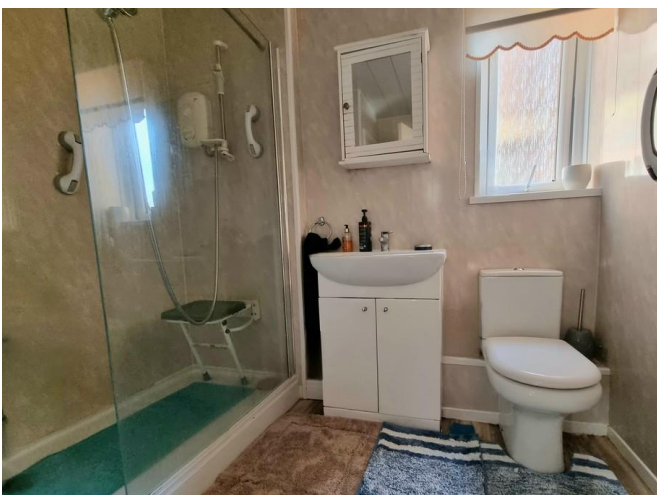
PARKING BAY One allocated parking bay located to the front of the property.

BEDROOM Built in wardrobes, wall mounted electric radiator, carpet flooring and uPVC window.

BATHROOM PVC clad walls and ceiling. White suite comprising: low level WC with push button flush, wash hand basin with vanity cupboard below, glazed shower enclosure with electric shower over, vinyl flooring, heated towel rail, built in storage cupboard, immersion hot water system for the kitchen and bathroom hot taps and uPVC window.

EXTERNALLY

COMMUNAL GARDEN To the rear of Linwood Court there is a lovely wall enclosed communal garden. Laid





%epcGraph_c_1_210%

Martin & Co Guisborough

83 Westgate • • Guisborough • TS14 6AF
T: 01287 631254 • E: Guisborough@martinco.com

01287 631254

<http://www.martinco.com>



Accuracy: References to the Tenure of a Property are based on information supplied by the Seller. The Agent has not had sight of the title documents. A Buyer is advised to obtain verification from their Solicitor. Items shown in photographs including but not limited to carpets, fixtures and fittings are not included unless specifically mentioned within the sales particulars. They may however be available by separate negotiation. Buyers must check the availability of any property and make an appointment to view before embarking on any journey to see a property. No person in the employment of the agent has any authority to make any representation about the property, and accordingly any information given is entirely without responsibility on the part of the agents, sellers(s) or lessors(s). Any property particulars are not an offer or contract, nor for part of one. **Sonic / laser Tape:** Measurements taken using a sonic / laser tape measure may be subject to a small margin of error. **All Measurements:** All Measurements are Approximate. **Services Not tested:** The Agent has not tested any apparatus, equipment, fixtures and fittings or services and so cannot verify that they are in working order or fit for the purpose. A Buyer is advised to obtain verification from their Solicitor or Surveyor.