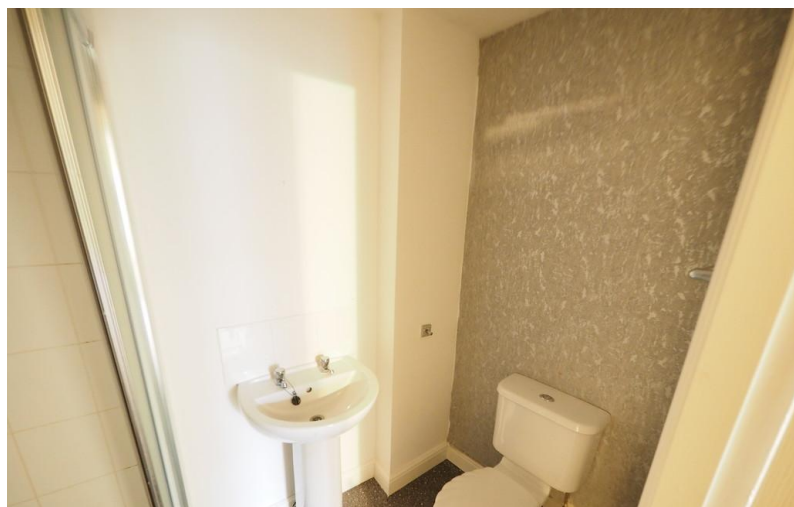


TO LET



Westgate, Guisborough

1 Bedroom, 1 Bathroom, First Floor Flat

£575 pcm



Westgate, Guisborough

1 Bedroom, 1 Bathroom

£575 pcm

Date available: 23rd August 2025

Deposit: £575

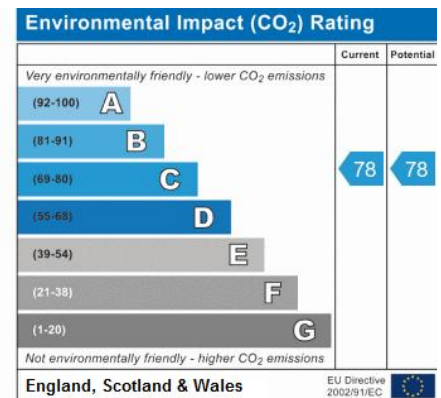
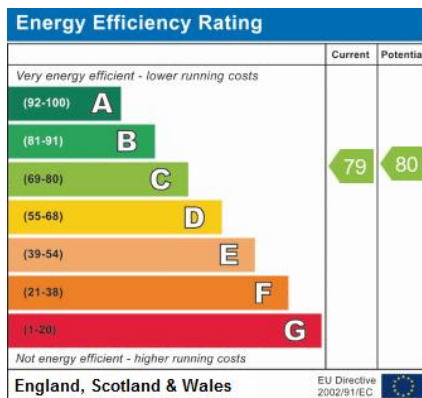
Unfurnished

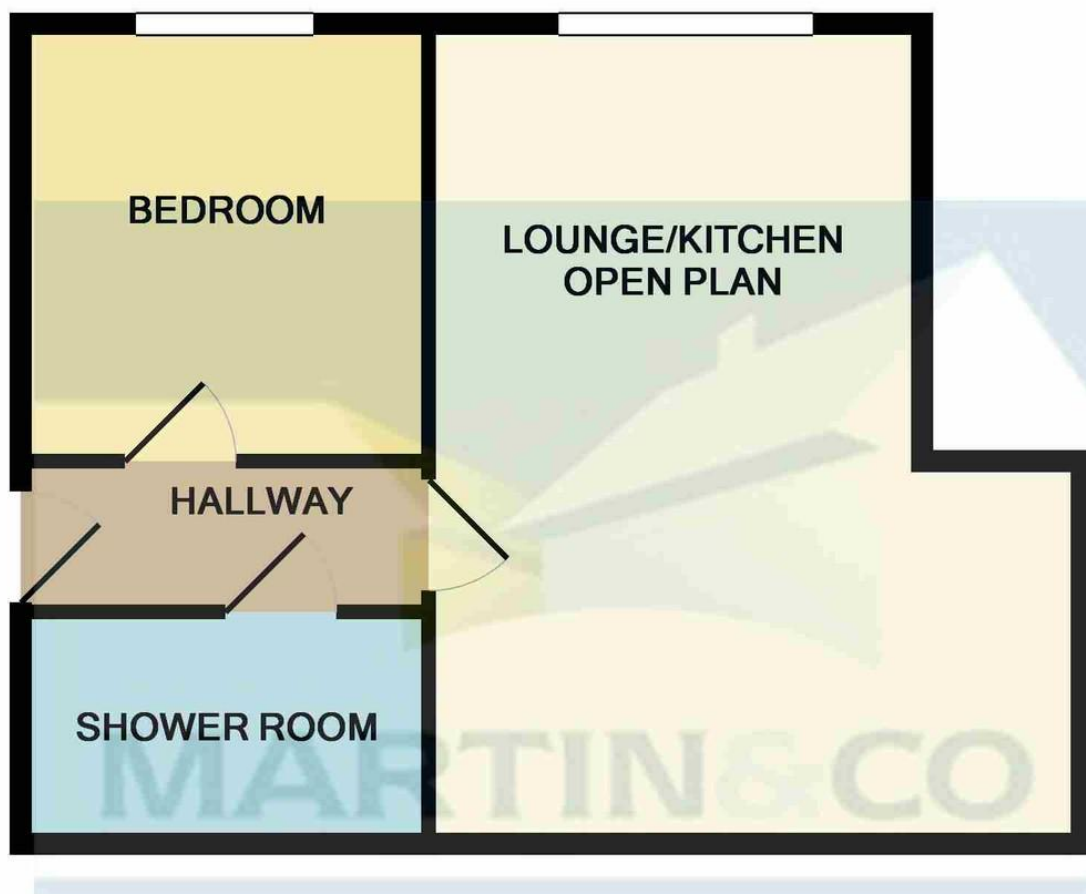
Council Tax band: A

- Self Contained Flat
- Close to Local Amenities
- New kitchen
- Lounge
- One Bedroom
- Gas Central Heating Boiler
- Unfurnished









Whilst every attempt has been made to ensure the accuracy of the floor plan contained here, measurements of doors, windows, rooms and any other items are approximate and no responsibility is taken for any error, omission, or mis-statement. This plan is for illustrative purposes only and should be used as such by any prospective purchaser. The services, systems and appliances shown have not been tested and no guarantee as to their operability or efficiency can be given
Made with Metropix ©2019

Martin & Co Guisborough

83 Westgate • Guisborough • TS14 6AF

T: 01287 631254 • E: Guisborough@martinco.com <http://www.martinco.com>

01287 631254



Accuracy: References to the Tenure of a Property are based on information supplied by the Seller. The Agent has not had sight of the title documents. A Buyer is advised to obtain verification from their Solicitor. Items shown in photographs including but not limited to carpets, fixtures and fittings are not included unless specifically mentioned within the sales particulars. They may however be available by separate negotiation. Buyers must check the availability of any property and make an appointment to view before embarking on any journey to see a property. No person in the employment of the agent has any authority to make any representation about the property, and accordingly any information given is entirely without responsibility on the part of the agents, sellers(s) or lessors(s). Any property particulars are not an offer or contract, nor for part of one. **Sonic / laser Tape:** Measurements taken using a sonic / laser tape measure may be subject to a small margin of error. **All Measurements:** All Measurements are Approximate. **Services Not tested:** The Agent has not tested any apparatus, equipment, fixtures and fittings or services and so cannot verify that they are in working order or fit for the purpose. A Buyer is advised to obtain verification from their Solicitor or Surveyor.