

FOR SALE



Enfield Chase, Guisborough

3 Bedrooms, 1 Bathroom, Semi-Detached House

£185,000



Enfield Chase, Guisborough

3 Bedrooms, 1 Bathroom

£185,000

- Quiet location
- Great For First Time Buyers
- Great walks Close by
- Driveway
- Close to schools



FULL DESCRIPTION This great three-bedroom home is located in a prime location, close to schools and amenities, offering great views of the surrounding area. The spacious bedrooms provide ample space for all your needs, with large windows allowing natural light to flood the rooms.

The highlight of this home is undoubtedly the breathtaking views that can be enjoyed from the comfort of your own living room.

With its convenient location, spacious rooms, and incredible views, this property is sure to exceed all your expectations.

Call Martin & Co 01287 631254 today to book your viewing.

INTERNALLY

GROUND FLOOR

ENTRANCE HALL uPVC entrance door, composite entrance door, ceiling cornice, textured ceiling, uPVC panelling, clock cupboard, under stair storage, central heating radiator, laminate flooring and stairs leading to the first floor.

LOUNGE/DINER 10' 4" x 25' 5" (3.15m x 7.77m) To front and rear aspect. Ceiling cornice, textured ceiling, architrave, wooden and marble fire surround incorporating electric fire, laminate flooring, double panelled central heating radiator and uPVC window and French doors.

KITCHEN 8' 7" x 10' 7" (2.63m x 3.24m) To rear aspect. Range of wall, base and drawer units with light wood effect fascias, 1.5 bowl coloured inset sink unit, mixer tap, uPVC cladding splash backs, laminate work surfaces, gas hob, electric oven, extractor hood, concealed wall mounted alpha gas central heating boiler, vinyl flooring, inset lighting and uPVC window.



UTILITY ROOM 7' 11" x 7' 1" (2.42m x 2.16m) To rear aspect. Large tall unit with white effect fascias, pedestal hand basin unit, laminate work surfaces, plumbing for washing machine, courtesy door to the garden, double panelled central radiator and uPVC window.

FIRST FLOOR

LANDING With uPVC window.

BEDROOM ONE 9' 9" x 11' 8" (2.98m x 3.56m) To front aspect. Ceiling cornice, textured ceiling, fitted wardrobes, central heating radiator and uPVC window.

BEDROOM TWO 8' 9" x 11' 7" (2.69m x 3.54m) To rear aspect. Ceiling cornice, textured ceiling, large storage cupboard, loft hatch, central heating radiator and uPVC window.

BEDROOM THREE 7' 8" x 8' 8" (2.34m x 2.66m) To front aspect. Ceiling cornice, textured ceiling, large over

stair cupboard, central heating radiator and uPVC window.

BATHROOM Fully uPVC cladding. White suite comprising; low level WC with push button flush, vanity inset wash hand basin, panelled bath with shower over, glazed side screen, extractor, vinyl flooring, heated towel rail and uPVC window.

EXTERNALLY

GARDENS The front garden has borders with mature plants. The fence enclosed rear garden is split level with a paved patio and decked area and a variety of shrubs, bushes and plants. Cold water external tap.

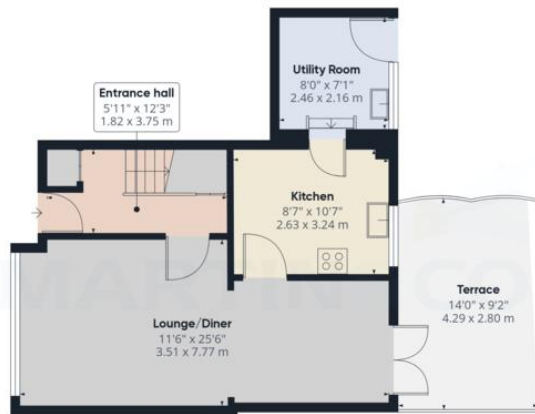
DRIVEWAY Providing parking.





%epcGraph_c_1_210%





Ground Floor



Floor 1

Approximate total area⁽¹⁾

869.83 ft²
80.81 m²

Balconies and terraces

127.34 ft²
11.83 m²

(1) Excluding balconies and terraces

While every attempt has been made to ensure accuracy, all measurements are approximate, not to scale. This floor plan is for illustrative purposes only.

Calculations are based on RICS IPMS 3C standard.

GIRAFFE360

Martin & Co Guisborough

83 Westgate • Guisborough • TS14 6AF
T: 01287 631254 • E: Guisborough@martinco.com

01287 631254

<http://www.martinco.com>

Accuracy: References to the Tenure of a Property are based on information supplied by the Seller. The Agent has not had sight of the title documents. A Buyer is advised to obtain verification from their Solicitor. Items shown in photographs including but not limited to carpets, fixtures and fittings are not included unless specifically mentioned within the sales particulars. They may however be available by separate negotiation. Buyers must check the availability of any property and make an appointment to view before embarking on any journey to see a property. No person in the employment of the agent has any authority to make any representation about the property, and accordingly any information given is entirely without responsibility on the part of the agents, sellers(s) or lessors(s). Any property particulars are not an offer or contract, nor for part of one. **Sonic / laser Tape:** Measurements taken using a sonic / laser tape measure may be subject to a small margin of error. **All Measurements:** All Measurements are Approximate. **Services Not tested:** The Agent has not tested any apparatus, equipment, fixtures and fittings or services and so cannot verify that they are in working order or fit for the purpose. A Buyer is advised to obtain verification from their Solicitor or Surveyor.