

FOR SALE



Fernie Road, Guisborough

4 Bedrooms, 1 Bathroom, Detached House

Offers Invited £275,000


MARTIN&CO



Fernie Road, Guisborough

4 Bedrooms, 1 Bathroom

Offers Invited £275,000

- No Forward Chain
- Detached
- Popular Hunters Hill Location
- Corner Plot
- Garage



FULL DESCRIPTION Martin & Co Guisborough is excited to present to the market this four bedroom detached property with **NO FORWARD CHAIN**. Situated on a large corner plot in the popular Hunters Hill area of Guisborough. Briefly comprising of entrance porch, hallway, lounge, diner, kitchen, conservatory, four bedrooms and bathroom. Externally the property benefits from a large corner plot with gardens to the front, side and landscaped rear garden. There is a garage with hard standing area currently housing a caravan and separate driveway to the rear. Viewing is essential to appreciate the size of this property, call 01287 631254.

INTERNALLY

GROUND FLOOR

PORCH Composite entrance door, ceiling cornice and laminate flooring.

HALLWAY Ceiling cornice, laminate flooring, central heating radiator and door access to integral garage.

LOUNGE 14' 8" x 12' 11" (4.48m x 3.95m) To front aspect. Ceiling cornice, limestone fire surround incorporating gas fire, and uPVC bow window.

DINING ROOM 10' 7" x 10' 5" (3.24m x 3.20m) Ceiling cornice, two central heating radiators and sliding patio door leading to conservatory.

KITCHEN 10' 9" x 7' 1" (3.29m x 2.17m) To rear aspect. Range of wall, base and drawer units, 1.5 bowl stainless steel inset sink unit, mixer tap, tiled splash backs, laminate work surfaces, 5 ring gas hob, double electric oven, integrated microwave, extractor hood, tiled flooring, uPVC window and uPVC door leading to rear garden.



CONSERVATORY 10' 11" x 9' 4" (3.33m x 2.85m)
uPVC Conservatory. With central heating radiator,
laminated flooring. French uPVC door to the rear garden.

FIRST FLOOR

LANDING With loft access hatch to boarded loft space
via retractable ladder.

BEDROOM 15' 10" x 8' 10" (4.84m x 2.71m) To front
and rear aspects. Ceiling cornice, laminated flooring, two
central heating radiators and two uPVC windows.

BATHROOM Tiled bathroom with white suite
comprising: WC, vanity wash hand basin with storage
cupboard below, panelled bath with Mira shower over,
bi fold glazed side screen, extractor fan light, inset
lights, vinyl flooring and heated towel rail.

BEDROOM 11' 0" x 10' 3" (3.36m x 3.14m) To rear
aspect. Ceiling cornice, central heating radiator,

laminated flooring and uPVC window.

BEDROOM 12' 11" x 10' 7" (3.96m x 3.25m) To front
aspect. Ceiling cornice, fitted wardrobes, laundry
cupboard, central heating radiator, laminated flooring
and uPVC window.

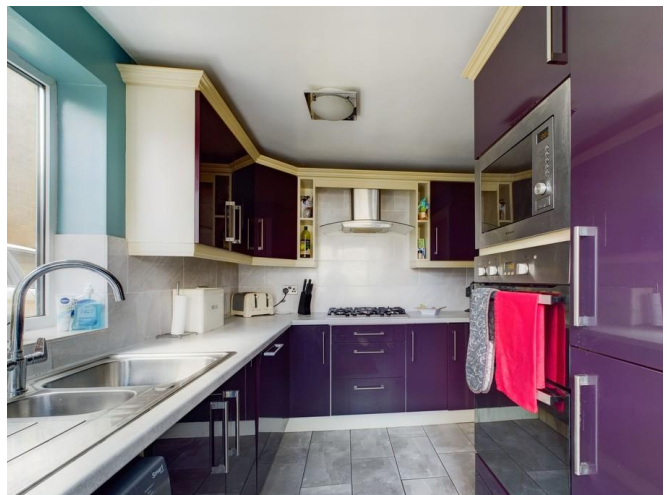
BEDROOM 9' 4" x 6' 9" (2.87m x 2.08m) To side
aspect. Ceiling cornice, cupboard housing ideal gas
central heating boiler, central heating radiator and
uPVC window.

EXTERNALLY

DRIVEWAY Block paved driveway providing parking
and access to hard standing area beyond within the
rear garden.

GARAGE With up and over door, power and light.

GARDENS The property benefits from a spacious
corner plot with front side and rear gardens. The front

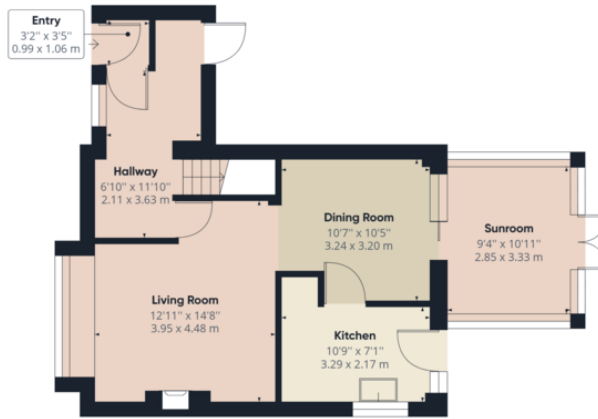


and side gardens are mainly laid to lawn with wall and hedge enclosure. The fence enclosed rear garden is paved for low maintenance. Cold water external tap.

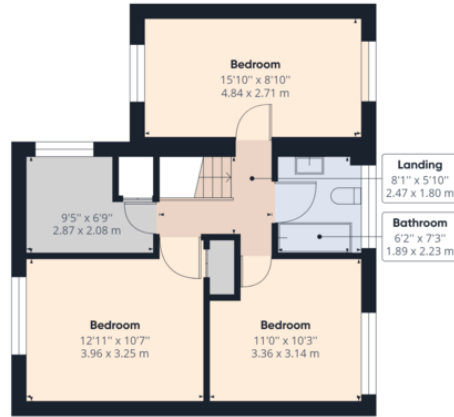


Score	Energy rating	Current	Potential
92+	A		
81-91	B		83 B
69-80	C		
55-68	D	67 D	
39-54	E		
21-38	F		
1-20	G		





Ground Floor



Floor 1

Approximate total area⁽¹⁾
 1170.71 ft²
 108.76 m²

(1) Excluding balconies and terraces

While every attempt has been made to ensure accuracy, all measurements are approximate, not to scale. This floor plan is for illustrative purposes only.

GIRAFFE360

Martin & Co Guisborough

83 Westgate • Guisborough • TS14 6AF
 T: 01287 631254 • E: Guisborough@martinco.com

01287 631254

<http://www.martinco.com>



Accuracy: References to the Tenure of a Property are based on information supplied by the Seller. The Agent has not had sight of the title documents. A Buyer is advised to obtain verification from their Solicitor. Items shown in photographs including but not limited to carpets, fixtures and fittings are not included unless specifically mentioned within the sales particulars. They may however be available by separate negotiation. Buyers must check the availability of any property and make an appointment to view before embarking on any journey to see a property. No person in the employment of the agent has any authority to make any representation about the property, and accordingly any information given is entirely without responsibility on the part of the agents, sellers(s) or lessors(s). Any property particulars are not an offer or contract, nor for part of one. **Sonic / laser Tape:** Measurements taken using a sonic / laser tape measure may be subject to a small margin of error. **All Measurements:** All Measurements are Approximate. **Services Not tested:** The Agent has not tested any apparatus, equipment, fixtures and fittings or services and so cannot verify that they are in working order or fit for the purpose. A Buyer is advised to obtain verification from their Solicitor or Surveyor.