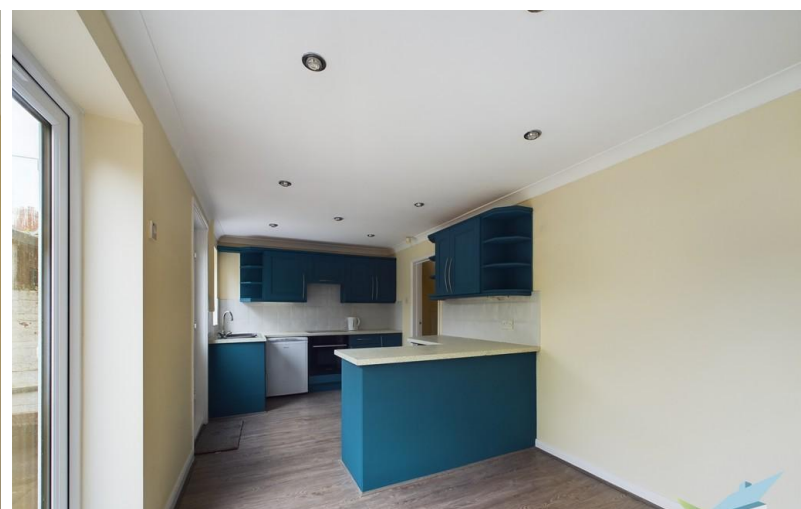


ON HOLD



Fairfield Avenue, Ormesby

3 Bedrooms, 1 Bathroom, Semi-Detached House

Offers Over £160,000



Fairfield Avenue, Ormesby

3 Bedrooms, 1 Bathroom

Offers Over £160,000

- No Forward Chain
- Three Bedrooms
- Additional Loft Room
- Recently Redecorated Throughout
- Driveway Providing Off Road Parking



FULL DESCRIPTION Experience modern living in this 3 bedroom semi-detached property in the charming neighborhood of Ormesby in Middlesbrough. Boasting hallway, lounge, open plan kitchen diner, 3 bedrooms, 1 bathroom complete with an additional loft room which could be used as a home office, this home offers ample space for families or professionals seeking comfort and convenience. Park with ease in the driveway which provides ample off-road parking, and unwind in the tranquil front and rear gardens. Recently decorated throughout, this property exudes a fresh and inviting ambiance, making it the perfect place to call home.

INTERNALLY

GROUND FLOOR

ENTRANCE HALL uPVC entrance door, ceiling cornice, uPVC window, under stairs cupboard, laminate flooring, double panelled central heating radiator and stairs leading to the first floor.

LOUNGE 12' 8" x 12' 8" (3.86m x 3.86m) To front aspect. Ceiling cornice, textured ceiling, wooden fire surround with conglomerate insert and hearth incorporating gas fire, laminate flooring, central heating radiator and uPVC window.

DINING KITCHEN 19' 2" x 8' 9" (5.84m x 2.67m) To rear aspect. Wall, base and drawer units, laminate work surfaces, tiled splash backs, stainless steel inset sink unit, mixer tap, ceramic hob, extractor hood, electric oven, space for under counter fridge and separate freezer, wall mounted Baxi gas central heating combination boiler, laminate flooring, central heating radiator, uPVC window and uPVC French doors to the rear garden.

FIRST FLOOR



SECOND FLOOR

LANDING With storage cupboard, door to loft room and carpet flooring.

BEDROOM 1 12' 8" x 9' 8" (3.86m x 2.95m) To front aspect. Ceiling cornice, textured ceiling, fitted cupboard over stairs, central heating radiator, uPVC window and carpet flooring.

BEDROOM 2 To front aspect. Ceiling cornice, textured ceiling, central heating radiator, uPVC window and carpet flooring.

BEDROOM 3 To rear aspect. Ceiling cornice, central heating radiator, uPVC window and carpet flooring.

BATHROOM Part tiled. White suite comprising WC with push button flush, pedestal wash hand basin, panelled bath with Triton electric shower over, glazed side screen, clad ceiling, vinyl flooring, central heating radiator and uPVC window.

LOFT ROOM 18' 6" x 9' (5.64m x 2.74m) With two Velux style windows, inset lighting and power points.

EXTERNALLY

GARDENS The front garden is mainly laid to lawn with low picket fence. The fence enclosed rear garden is mainly laid to lawn with paved patio and decked area. Cold water tap. Two brick storage outbuildings with power and electric ideal for storing washer/dryer.





Score	Energy rating	Current	Potential
92+	A		
81-91	B		
69-80	C		79 C
55-68	D		
39-54	E	54 E	
21-38	F		
1-20	G		





Martin & Co Guisborough
 83 Westgate • Guisborough • TS14 6AF
 T: 01287 631254 • E: Guisborough@martinco.com

01287 631254
<http://www.martinco.com>



Accuracy: References to the Tenure of a Property are based on information supplied by the Seller. The Agent has not had sight of the title documents. A Buyer is advised to obtain verification from their Solicitor. Items shown in photographs including but not limited to carpets, fixtures and fittings are not included unless specifically mentioned within the sales particulars. They may however be available by separate negotiation. Buyers must check the availability of any property and make an appointment to view before embarking on any journey to see a property. No person in the employment of the agent has any authority to make any representation about the property, and accordingly any information given is entirely without responsibility on the part of the agents, sellers(s) or lessors(s). Any property particulars are not an offer or contract, nor for part of one. **Sonic / laser Tape:** Measurements taken using a sonic / laser tape measure may be subject to a small margin of error. **All Measurements:** All Measurements are Approximate. **Services Not tested:** The Agent has not tested any apparatus, equipment, fixtures and fittings or services and so cannot verify that they are in working order or fit for the purpose. A Buyer is advised to obtain verification from their Solicitor or Surveyor.

