

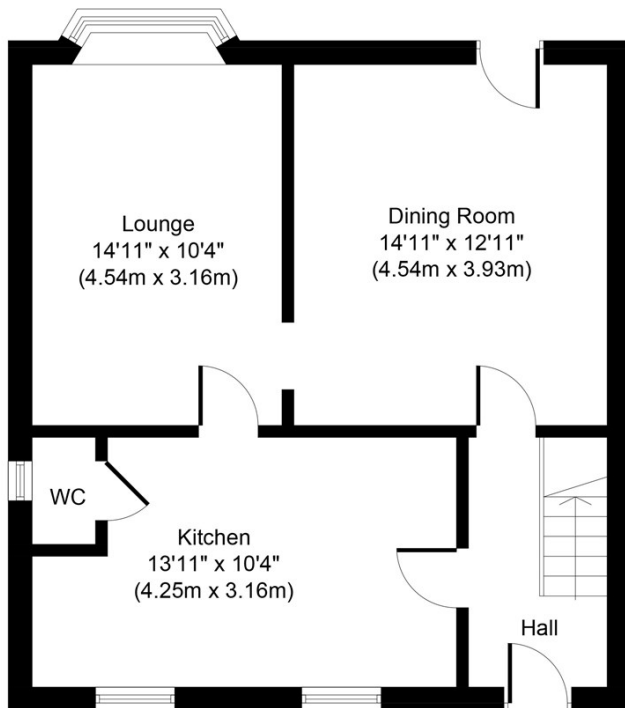


## 31 BRICKFIELD ROAD EPPING, CM16 7QX

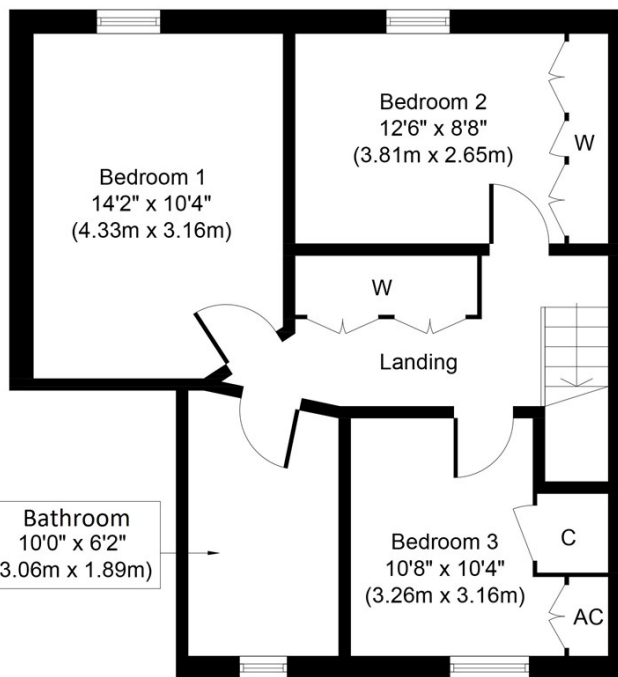
£1,850 PCM

A property with much to offer, including a lovely, sunny garden, a secluded location and the addition of a handy downstairs cloakroom.





**Ground Floor**  
**Approximate Floor Area**  
**620 Sq. ft.**  
**(57.6 Sq. m.)**



**First Floor**  
**Approximate Floor Area**  
**539 Sq. ft.**  
**(50.1 Sq. m.)**

Whilst every attempt has been made to ensure the accuracy of the floor plan contained here, measurements of doors, windows, rooms and any other items are approximate and no responsibility is taken for any error, omission, or mis-statement. This plan is for illustrative purposes only and should be used as such by any prospective purchaser or tenant. The services, systems and appliances shown have not been tested and no guarantee as to their operability or efficiency can be given.

Copyright V360 Ltd 2021 | [www.houseviz.com](http://www.houseviz.com)



Energy Efficiency Rating		
	Current	Potential
Very energy efficient - lower running costs		
(92 plus) <b>A</b>		
(81-91) <b>B</b>		
(69-80) <b>C</b>		
(55-68) <b>D</b>		
(39-54) <b>E</b>		
(21-38) <b>F</b>		
(1-20) <b>G</b>		
Not energy efficient - higher running costs		
<b>England &amp; Wales</b>	EU Directive	
	2002/91/EC	

Agents Note: Whilst every care has been taken to prepare these particulars, they are for guidance purposes only. All measurements are approximate and are for general guidance purposes only and whilst every care has been taken to ensure their accuracy, they should not be relied upon and potential buyers/tenants are advised to recheck the measurements

The Personal Property Shop Ltd  
 Lettings  
 Brook Farm, Braintree Road  
 Wethersfield  
 Braintree  
 Essex  
 CM7 4BX

01279 940840  
[info@thepersonalpropertyshop.co.uk](mailto:info@thepersonalpropertyshop.co.uk)  
<https://personalpropertyshop.co.uk/>

