



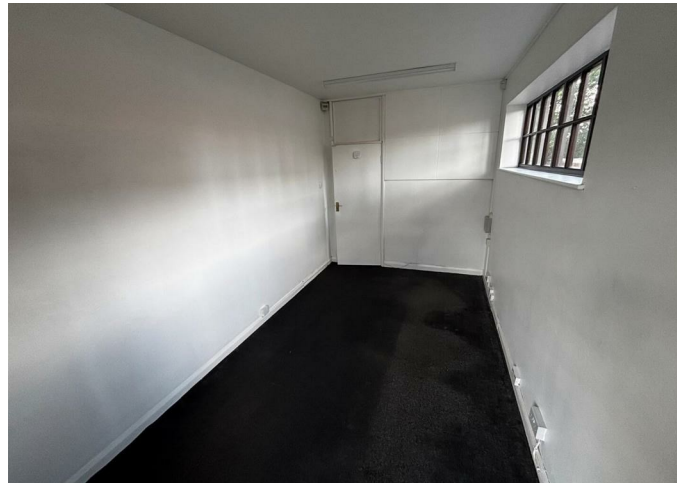
Commercial
Security Deposit: £200
Holding Deposit: Add Text Here

SHOP 2 CROFT MEAD, ANSLEY, CV10 9PZ

£450 Per

FEATURES

- Ground floor commercial unit
- Recently redecorated interior
- Versatile use: shop or office
- Close to motorway network
- Short drive to Atherstone
- Near Nuneaton amenities
- Leafy street with parking
- Next to a hair salon



0 Bedroom Commercial located in Ansley

Welcome to 2 Croft Mead, a versatile commercial property located in the charming village of Ansley. This recently redecorated ground floor space offers a multitude of possibilities, making it ideal for a shop, treatment room, tailoring business, office, or even a storage unit.

The property benefits from convenient parking for one vehicle, ensuring ease of access for both you and your clients. Its prime location places you within close proximity to local amenities, allowing for a vibrant business environment. Additionally, the property is well-connected to the motorway network, making it easily accessible for those commuting to and from Atherstone and beyond.

With its fresh decor and adaptable layout, this space is ready for you to make it your own. Whether you are looking to establish a new venture or expand an existing one, 2 Croft Mead presents an excellent opportunity in a desirable area. Don't miss the chance to secure this fantastic commercial property in Ansley.


The lease is negotiable depending on tenant's circumstances but is for a minimum of 2 years.

Call us on
02476 328251

LIZ@LIZTAYLORLETTINGS.CO.UK
www.liztaylorlettings.co.uk

Council Tax Band
A



Energy Efficiency Rating		
	Current	Potential
Very energy efficient - lower running costs		
(92 plus) A		
(81-91) B		
(69-80) C		
(55-68) D		
(39-54) E		
(21-38) F		
(1-20) G		
Not energy efficient - higher running costs		
England & Wales		EU Directive 2002/91/EC 

Agents Note: Whilst every care has been taken to prepare these particulars, they are for guidance purposes only. All measurements are approximate and are for general guidance purposes only and whilst every care has been taken to ensure their accuracy, they should not be relied upon and potential buyers are advised to recheck the measurements.

