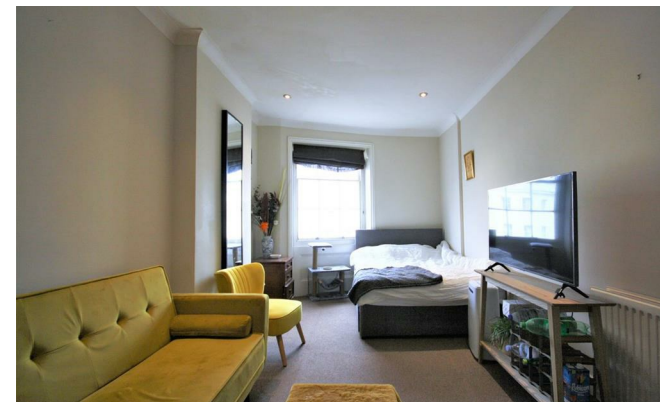
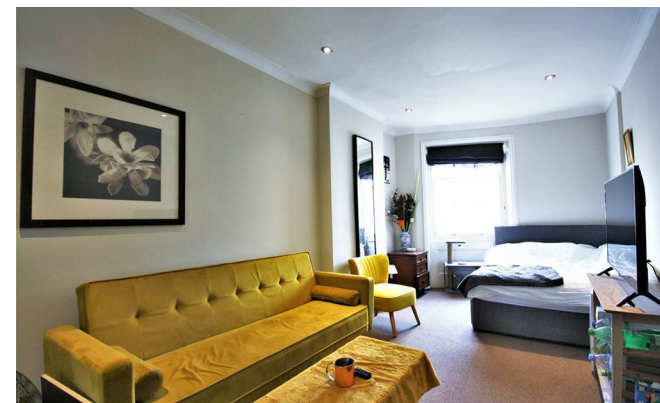




Stanfords
Estate Agents



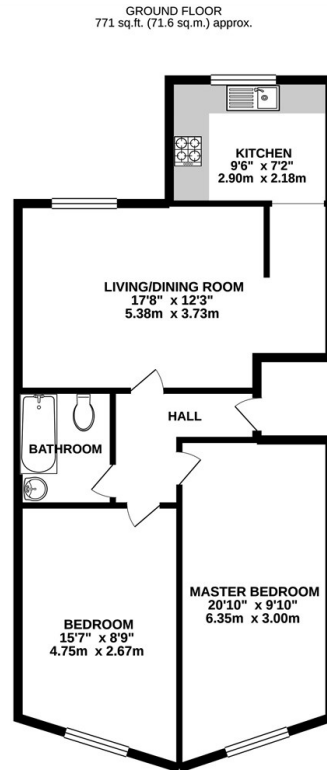
Brunswick Place

, Hove BN3 1ND

- VIDEO LINK
- Two Double Bedrooms
- City and Sea Views
- Brand New Fitted Kitchen
- Long / Short Term
- Available 10th OCTOBER
- Top Floor Flat
- Unfurnished
- Modern Finish Throughout
- Fantastic Central Hove Location

£1,550 PCM

Local Authority Brighton & Hove City Council
Council Tax Band B
EPC Rating E



TOTAL FLOOR AREA: 710sq.ft. (66.0 sq.m.) approx.
Whilst every attempt has been made to ensure the accuracy of the floorplan contained here, measurements of doors, windows, rooms and any other items are approximate and no responsibility is taken for any error, omission or mis-statement. This plan is for illustrative purposes only and should be used as such for any prospective purchaser. The services, systems and appliances shown have not been tested and no guarantee as to their operability or efficiency can be given.
Made with floorplan ©2021



Stanfords Lettings Office
30-31 North Street, Brighton,
East Sussex, BN1 1EB

Contact
01273 733334
lettings@stanfords-
estates.com
www.stanfords-estates.com

Agents Note: Whilst every care has been taken to prepare these particulars, they are for guidance purposes only. All measurements are approximate and for general guidance purposes only and whilst every care has been taken to ensure accuracy, they should not be relied upon and potential buyers/tenants are advised to recheck the measurements.