



GILSON GRAY

LAW • PROPERTY • FINANCE

6 Eastern Access Road, Dalgety Bay



This is a fantastic opportunity to purchase a beautifully presented detached family home situated in a highly sought-after location. Dalgety Bay is a charming seaside town nestled within the commuter belt, offering excellent transport links to Edinburgh, other Fife towns, and central Scotland. The Dalgety Bay Rail station is located to the north of the town, with easy access from the A921 and connections to the East Coast Rail line.

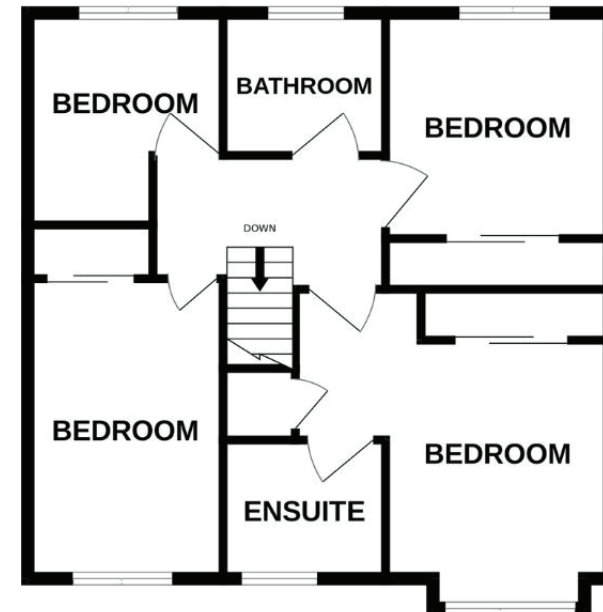
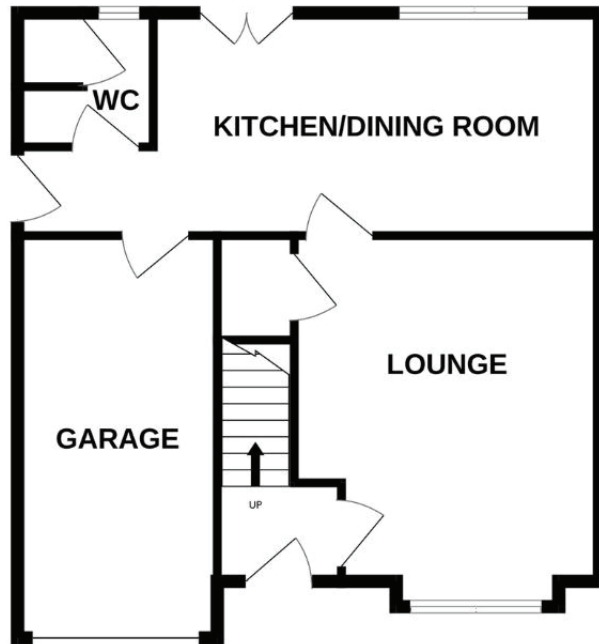
This ideal family home offers comfortable accommodation which comprises: Bright lounge, contemporary dining kitchen with patio doors leading to the rear garden, ground floor W/C, family bathroom and four well-proportioned bedrooms with the primary bedroom enjoying en-suite facilities. The comprehensive list of attributes include double glazing and gas fired central heating.

Externally there are generously sized private garden grounds and vehicular needs are catered for with a private driveway leading to a single integral garage.

This property will appeal to a wide range of buyers and early viewing is highly recommended.



Floor Plans



Lounge - 3.93m x 3.72m

Kitchen/Dining Room - 5.83m x 2.83m

W/C - 1.91m x 1.83m

Bedroom 1 - 3.94m x 3.81m

En-Suite - 2.08m x 1.67m

Bedroom 2 - 3m x 3.10m

Bedroom 3 - 4.08m x 2.68m

Bedroom 4 - 2.69m x 1.97m

Bathroom - 2.07m x 1.98m











EDINBURGH

29 Rutland Square
EH1 2BW
0131 516 5366

GLASGOW

160 West George Street
G2 2HQ
0141 530 2021

DUNDEE

2 West Marketgate
DD1 1QN
01382 201 000

EAST LOTHIAN

33 Westgate
EH39 4AG
01620 893 481

BORDERS

01890 880 008