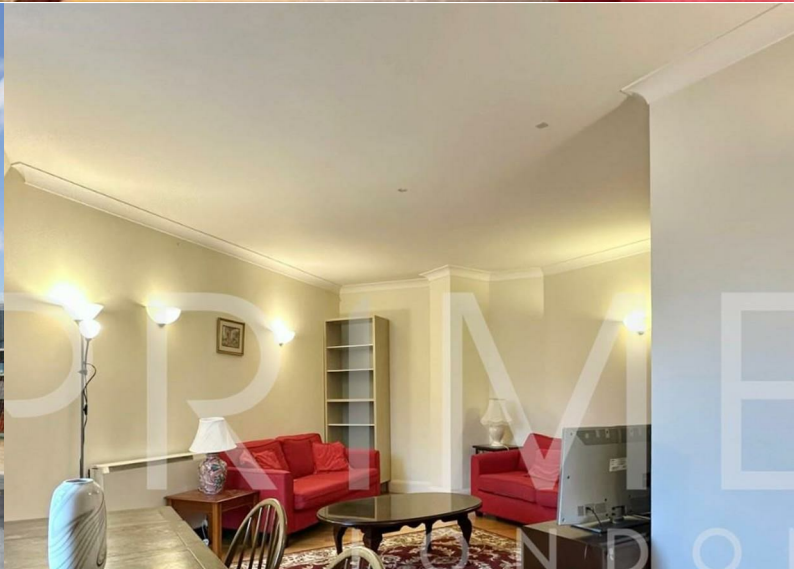




## South Block

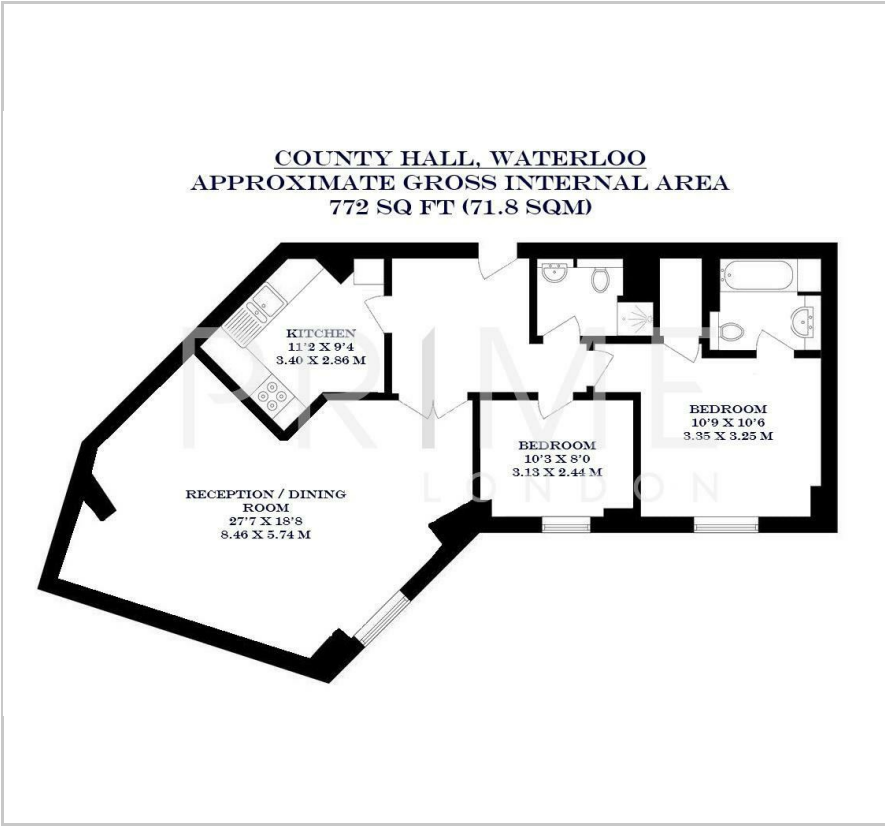
County Hall Apartments, South Bank, SE1 7GB

£692 Per Week





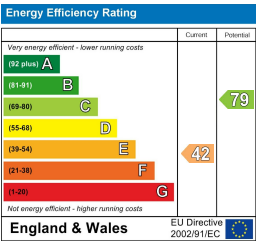
Floor Plan



Area Map



Energy Efficiency Graph



Viewing

By appointment. Contact us on 0207 928 6663 if you wish to arrange a viewing appointment for this property, or require further information.

- High floor two bedroom 772 sq ft (71.8 sqm) property
- Fully furnished
- Indoor heated swimming pool
- Gymnasium and spa
- 24 hour concierge

This spacious two bedroom apartment of 772 sq ft (71.8 sqm) is offered on a fully furnished basis, and is available to rent through Prime London in County Hall Apartments, South Bank.

This high floor property benefits from a spacious reception room, a generous master bedroom with en-suite bathroom, a second well proportioned double bedroom, and a further family bathroom.

County Hall itself is located immediately by the London Eye, and residents enjoy the exclusive use of the on-site facilities, namely a 24 hour concierge service and leisure complex complete with indoor heated swimming pool, gymnasium and spa.

The development is ideally situated for travel into the City, Canary Wharf and West End as Waterloo and Westminster stations are close by.



These particulars, whilst believed to be accurate are set out as a general outline only for guidance and do not constitute any part of an offer or contract. Intending purchasers should not rely on them as statements of representation of fact, but must satisfy themselves by inspection or otherwise as to their accuracy. No person in this firm's employment has the authority to make or give any representation or warranty in respect of the property.