



Keybridge Tower

1 Exchange Gardens, Vauxhall, SW8 1BN

Asking Price £1,795,000



3



3

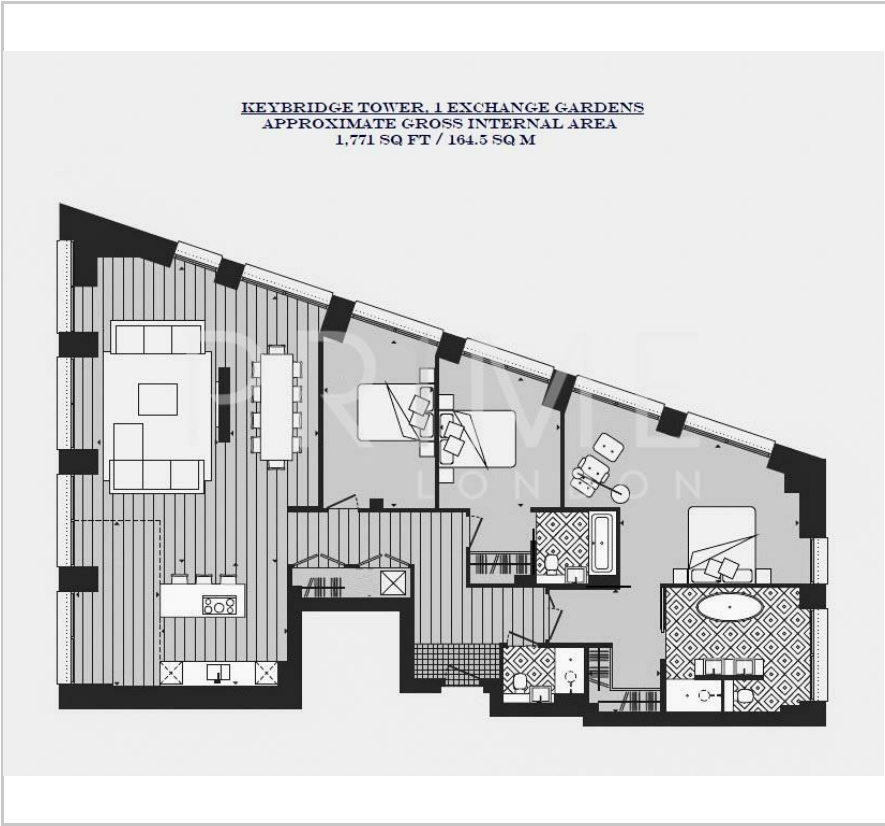


1

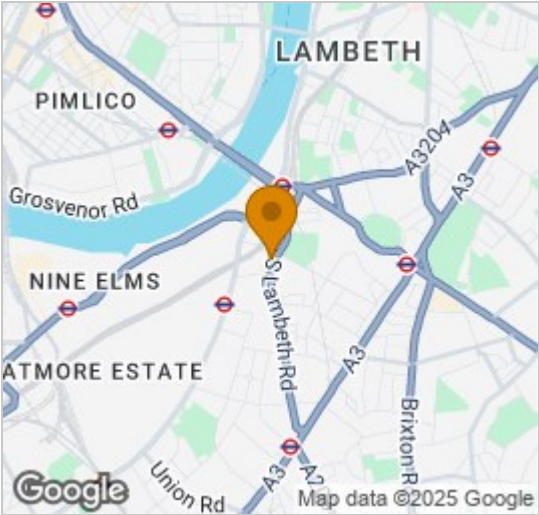


B

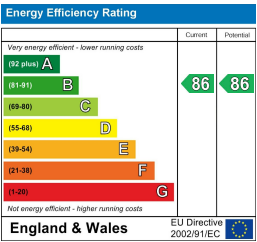
Floor Plan



Area Map



Energy Efficiency Graph



Viewing

By appointment. Contact us on 0207 928 6663 if you wish to arrange a viewing appointment for this property, or require further information.

- Warehouse style apartment
- Chain free
- Close proximity to Nine Elms and Vauxhall
- 1,771 sq ft (164.5 sq m)
- Gym, pool, spa, sauna and steam room
- 24 hour concierge service and Residents' Club

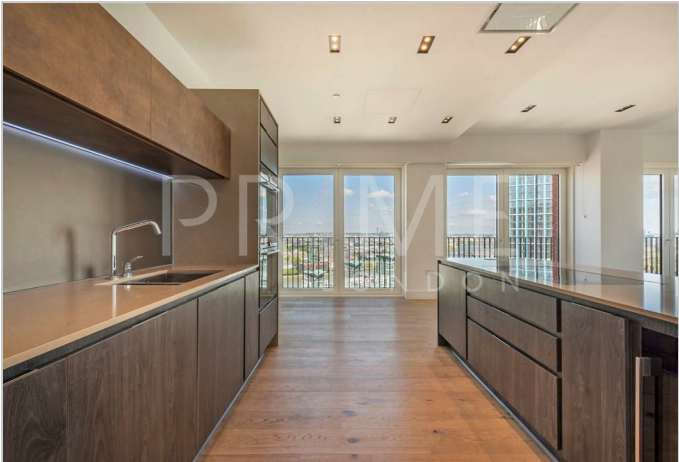
This striking three bedroom warehouse-style apartment, situated on a higher floor within the highly sought-after Keybridge development, is available for chain-free sale through Prime London.

The property also includes a secure parking space.

Spanning an impressive 1,771 sq ft (164.5 sq m), the apartment is located in the UK's tallest brick tower, set amidst one acre of beautifully landscaped open space.

The home features a dual-aspect open-plan reception room, a sleek integrated kitchen, three generous double bedrooms with ample storage, and three luxurious bathrooms, two en suite and one with a freestanding bath offering stunning city views.

Residents of Keybridge benefit from a 24 hour concierge, a 15 metre swimming pool, a stylish club lounge, and communal gardens, all within easy walking distance of Zone 1 transport links.



These particulars, whilst believed to be accurate are set out as a general outline only for guidance and do not constitute any part of an offer or contract. Intending purchasers should not rely on them as statements of representation of fact, but must satisfy themselves by inspection or otherwise as to their accuracy. No person in this firms employment has the authority to make or give any representation or warranty in respect of the property.