

The Tower

One St George Wharf, SW8 2DU

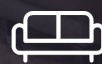
£1,800,000



3



2

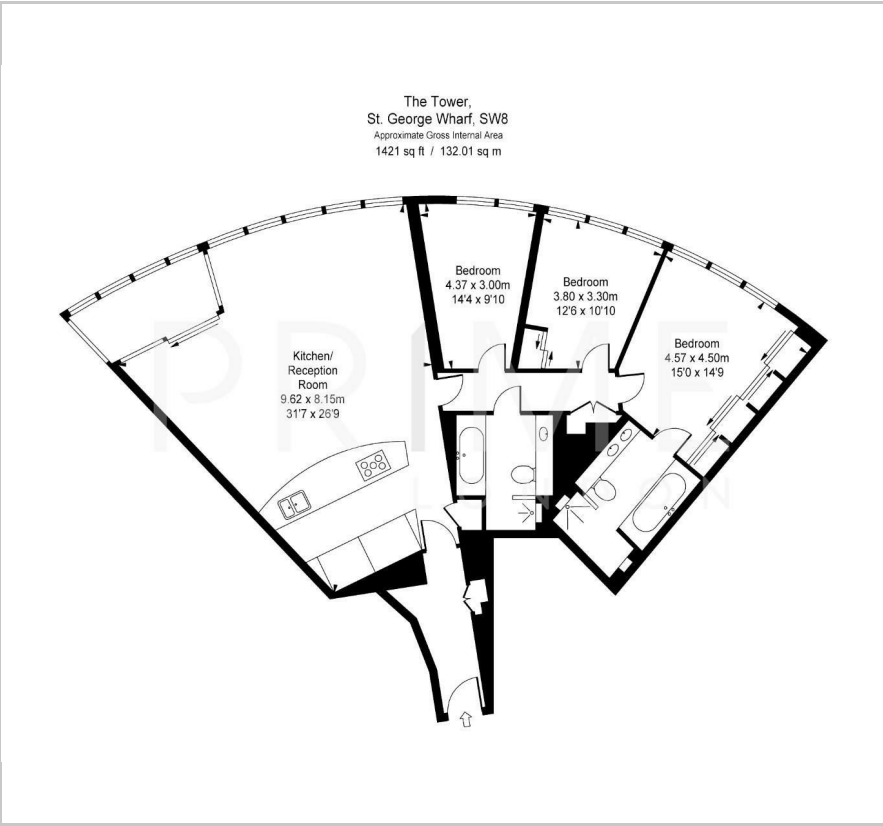


1

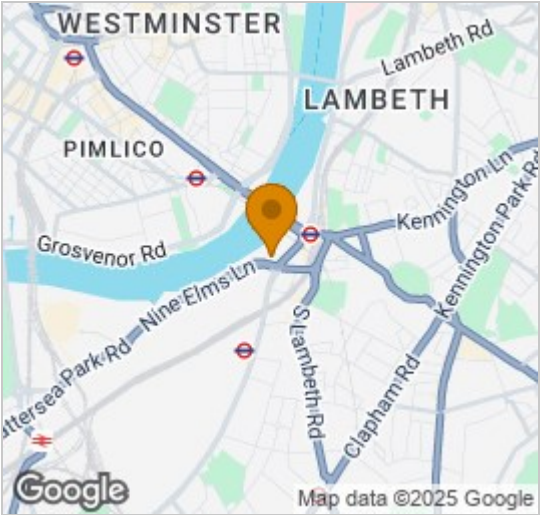


B

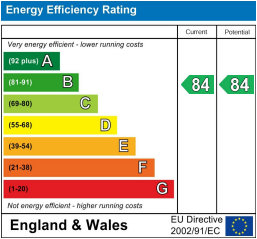
Floor Plan



Area Map



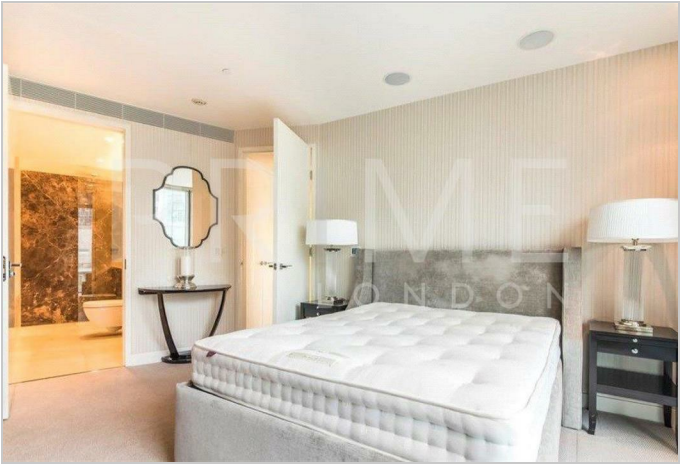
Energy Efficiency Graph



Viewing

By appointment. Contact us on 0207 928 6663 if you wish to arrange a viewing appointment for this property, or require further information.

- Stunning apartment
- Great Views
- 1421 sq ft (132 sq m)
- Valet Parking
- 24 hour concierge
- Residents' Spa and Gym

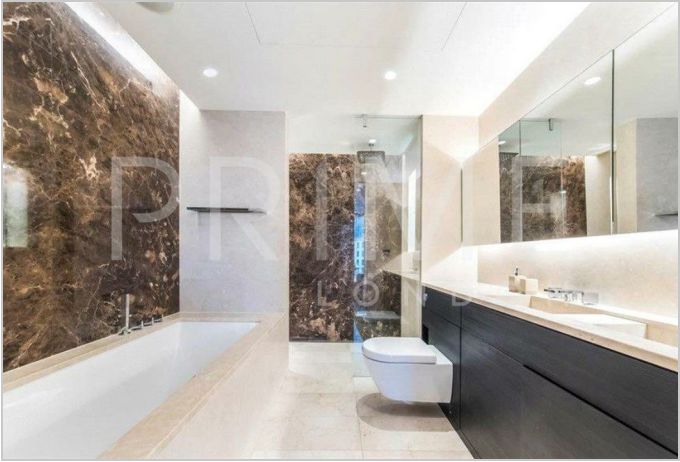


This stunning three bedroom apartment, positioned in the most desirable section of the iconic St George Wharf Tower, offering uninterrupted panoramic views of the River Thames, Westminster, the Houses of Parliament and the London Eye, is available for sale through Prime London.

Spanning 1,421 sq ft (132 sqm), the apartment showcases a superior specification throughout, with luxurious finishes including marble, glass, and walnut. The fully integrated kitchen features premium appliances, while the bathrooms are elegantly appointed with exquisite tiling and high-end fittings. The apartment further benefits from comfort cooling, a touch-panel control system, recessed lighting, an automated winter garden, and valet parking.

Residents of The Tower enjoy access to world-class amenities including a 24 hour concierge with valet service, a first-floor gym, swimming pool, sauna, and an exclusive private cinema.

This is an exceptional opportunity to own a luxurious apartment in one of London's most prestigious riverside addresses.



These particulars, whilst believed to be accurate are set out as a general outline only for guidance and do not constitute any part of an offer or contract. Intending purchasers should not rely on them as statements of representation of fact, but must satisfy themselves by inspection or otherwise as to their accuracy. No person in this firm's employment has the authority to make or give any representation or warranty in respect of the property.