



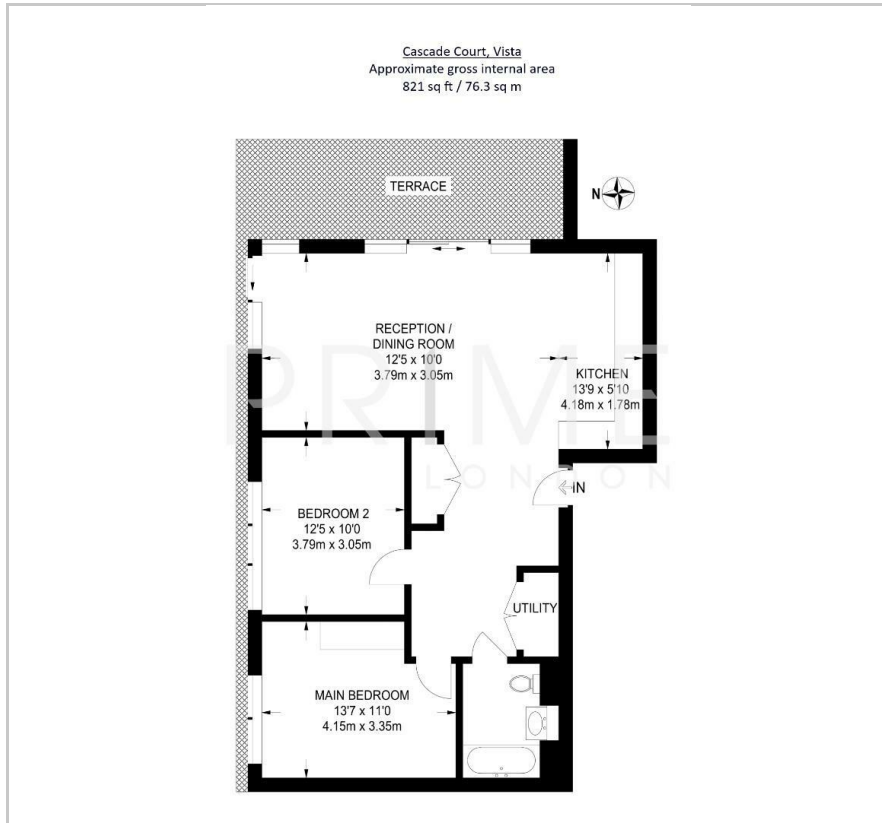
Cascade Court

1 Sopwith Way, Vista Chelsea Bridge Wharf, SW11 8AZ

Best Offers Over £750,000



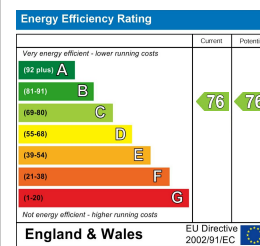
Floor Plan



Area Map



Energy Efficiency Graph



Viewing

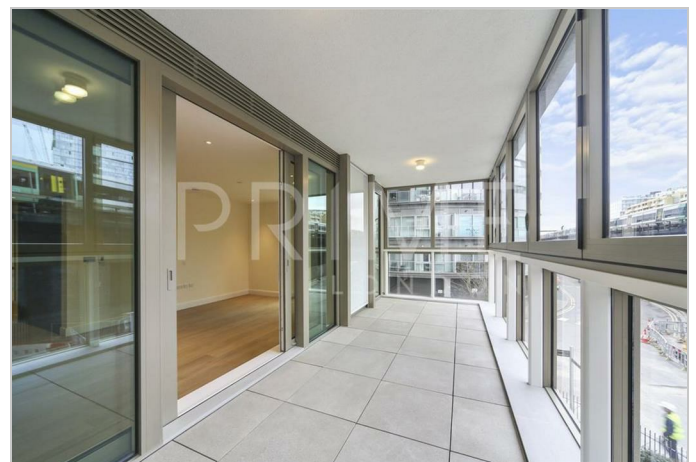
By appointment. Contact us on 0207 928 6663 if you wish to arrange a viewing appointment for this property, or require further information.

- Modern two bedroom ▪ 821 sq ft (76.3 sq m) apartment
- Chain free ▪ Private winter garden
- Resident's leisure facilities ▪ 24 hour concierge and spa

This modern two bedroom apartment, totalling 821 sq ft (76.3 sq m) and with a large living area and sizeable terrace, is available chain free through Prime London in Cascade Court, Vista Chelsea Bridge Wharf.

Cascade Court at Vista is the first phase in this contemporary development (with resident's leisure facilities and 24 concierge) overlooking Battersea Park, offering bright apartments with magnificent large windows and superb finishes, quality engineered timber flooring, kitchens with subtle satin finishes and beautiful stone work surfaces, high specification bathrooms and bedrooms with a fusion of subtle lighting, muted tones and soft carpeting.

The innovative and striking architecture has been conceived by world-leading architects Scott Brownrigg, to incorporate extensive outdoor landscaping and feature terraces whilst fitting into the beautiful surroundings of Battersea Park.



These particulars, whilst believed to be accurate are set out as a general outline only for guidance and do not constitute any part of an offer or contract. Intending purchasers should not rely on them as statements of representation of fact, but must satisfy themselves by inspection or otherwise as to their accuracy. No person in this firm's employment has the authority to make or give any representation or warranty in respect of the property.