

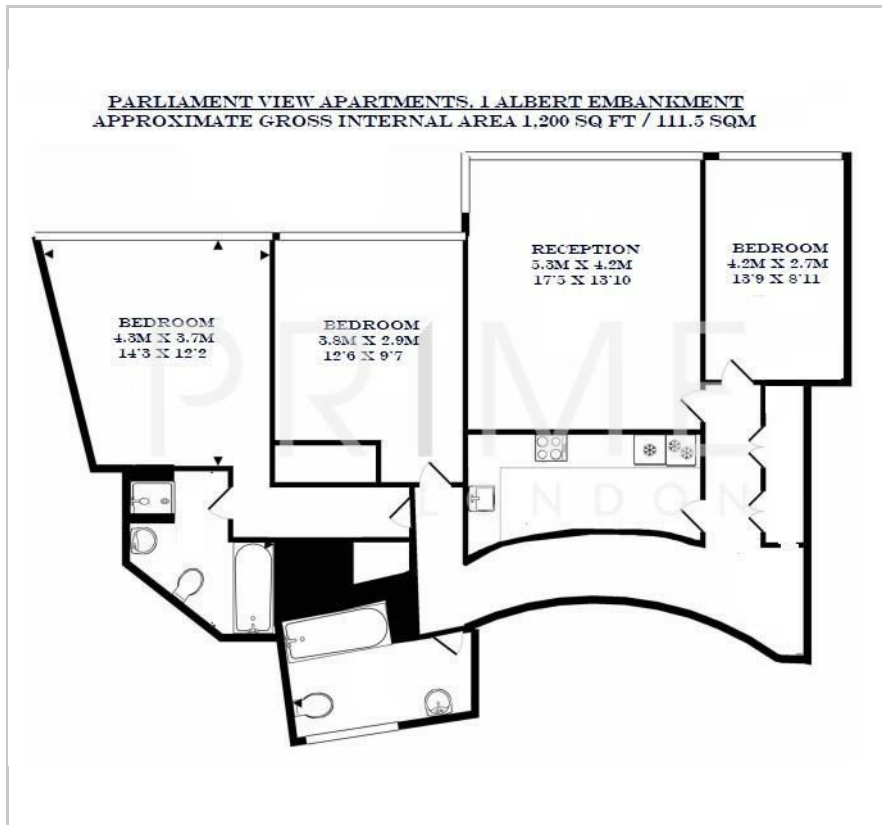
## Parliament View Apartments

1 Albert Embankment, SE1 7XQ

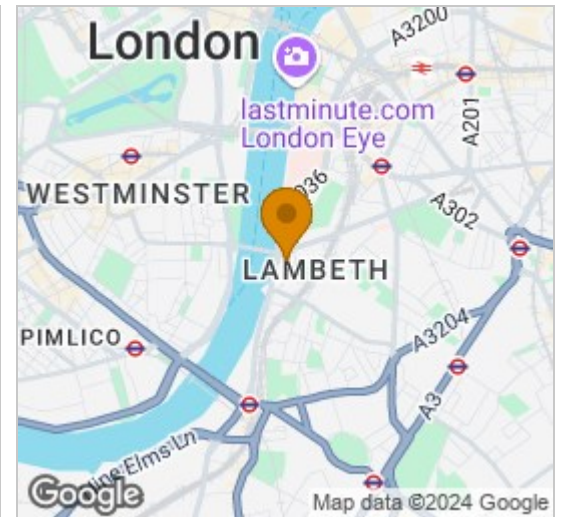
£1,100 Per Week



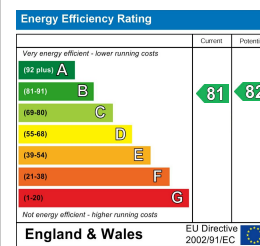
## Floor Plan



## Area Map



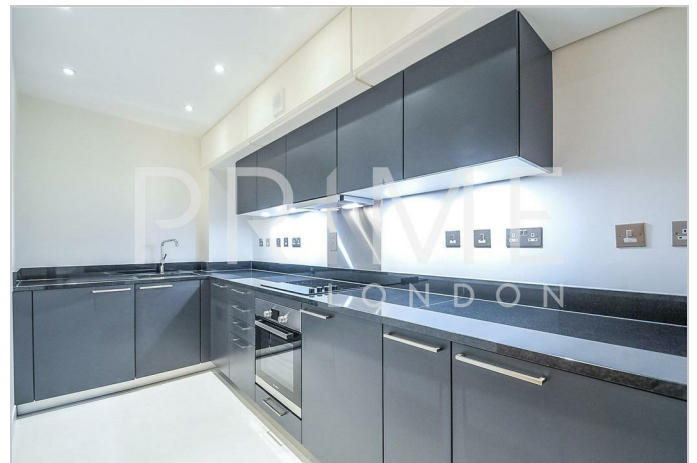
## Energy Efficiency Graph



## Viewing

By appointment. Contact us on 0207 928 6663 if you wish to arrange a viewing appointment for this property, or require further information.

- Three bedroom apartment of 1,200 sq ft
- Beautifully presented
- Secure parking space
- 24 hour concierge service

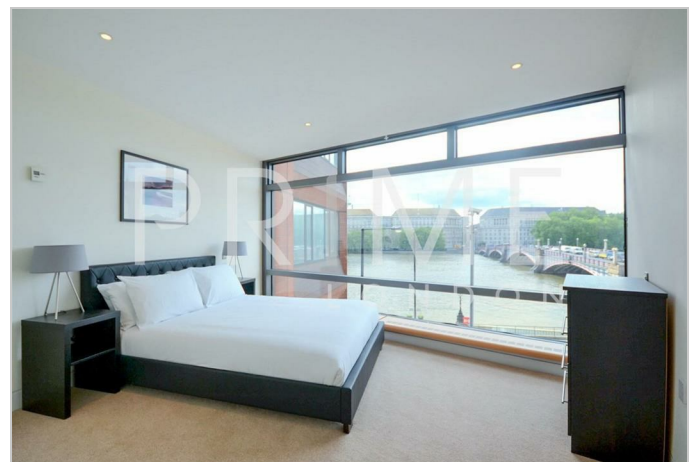


A spacious three bedroom apartment of 1,200 sq ft in Parliament View, offering spectacular Westminster views from all principle rooms, available for lease through Prime London.

Beautifully presented throughout, the property offers a generous reception, separate fully fitted kitchen, principle bedroom with en suite shower room, two further double bedrooms and separate guest bathroom. The apartment comes with the added convenience of a designated parking space in the development's secure underground car park.

Parliament View itself offers a 24 hour concierge service, resident's gymnasium and an excellent location on the river between Lambeth and Vauxhall Bridge.

As a result the development is within easy reach of the West End, Westminster, the City and South Bank. Vauxhall rail and underground station.



These particulars, whilst believed to be accurate are set out as a general outline only for guidance and do not constitute any part of an offer or contract. Intending purchasers should not rely on them as statements of representation of fact, but must satisfy themselves by inspection or otherwise as to their accuracy. No person in this firm's employment has the authority to make or give any representation or warranty in respect of the property.