



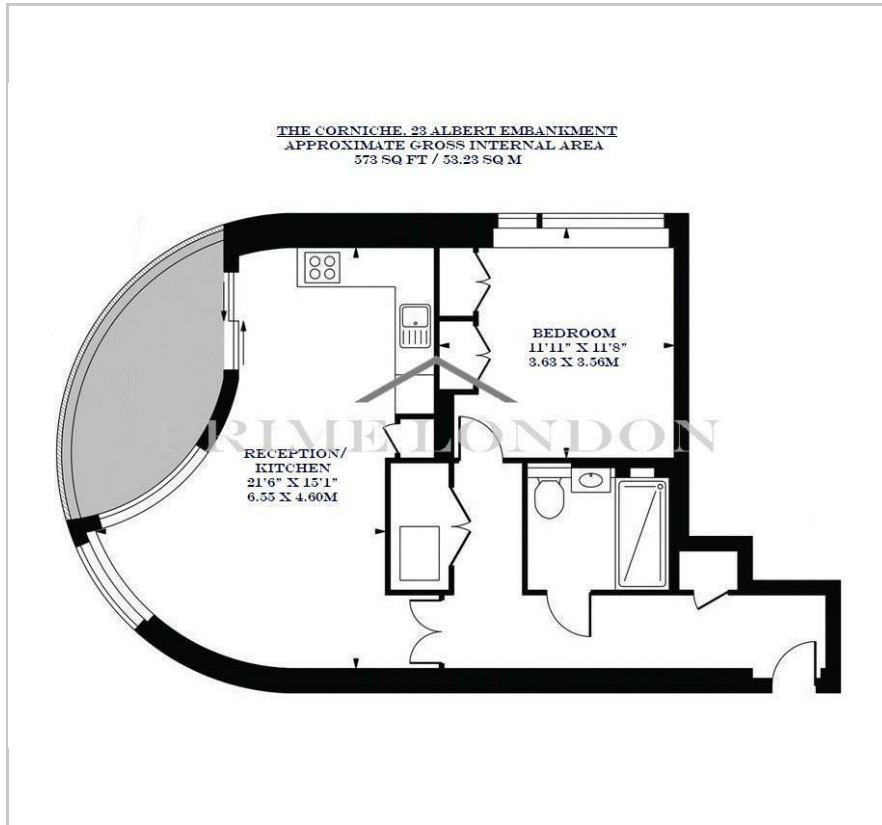
The Corniche

24 Albert Embankment, SE1 7GG

£750 Per Week



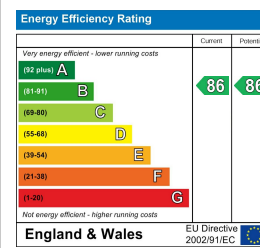
## Floor Plan



## Area Map



## Energy Efficiency Graph



## Viewing

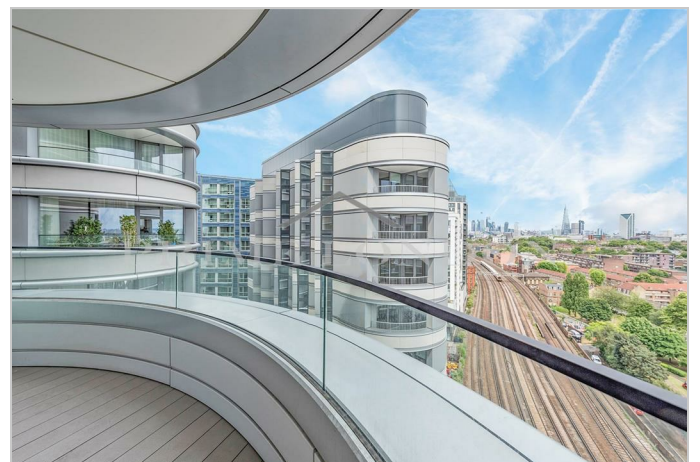
By appointment. Contact us on 0207 928 6663 if you wish to arrange a viewing appointment for this property, or require further information.

- Well sized one bedroom ▪ 573 sq ft / 53.23 sq m apartment
- Large private balcony ▪ Luxurious furnishings
- Gym, spa, pool, and Sky ▪ 24 hour concierge Lounge

A luxury high floor one bedroom apartment (the highest one bedroom apartment with balcony in the development), with luxurious furnishings and excellent finishes, available for lease through Prime London in The Corniche, 24 Albert Embankment.

Located in an enviable position on the bank of the River Thames, The Corniche (designed by Foster & Partners) captures some of London's most exquisite views, not only of the Houses of Parliament and the River Thames, but also the Tate Britain, London Eye and the City.

The development includes extensive residents facilities including a restaurant, gym, spa, pool and cinema, and also commercial spaces such as restaurants and cafes focused around a well considered and inviting public space.



These particulars, whilst believed to be accurate are set out as a general outline only for guidance and do not constitute any part of an offer or contract. Intending purchasers should not rely on them as statements of representation of fact, but must satisfy themselves by inspection or otherwise as to their accuracy. No person in this firm's employment has the authority to make or give any representation or warranty in respect of the property.