



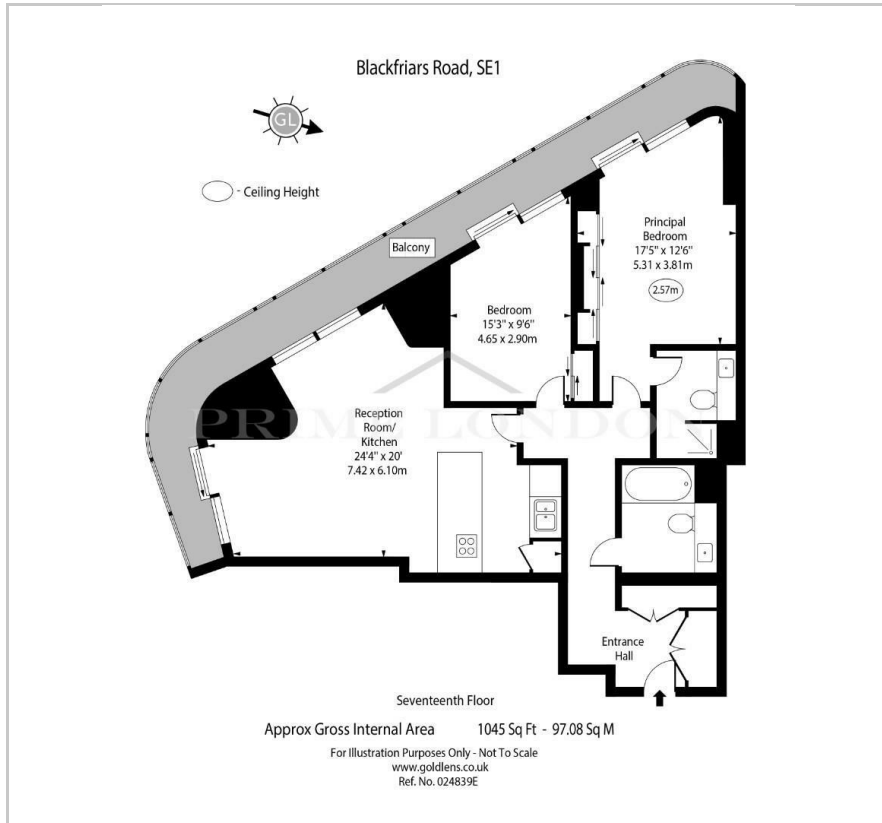
One Blackfriars

Bankside, SE1 9GJ

£1,380 Per Week



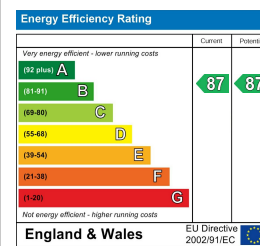
Floor Plan



Area Map



Energy Efficiency Graph



Viewing

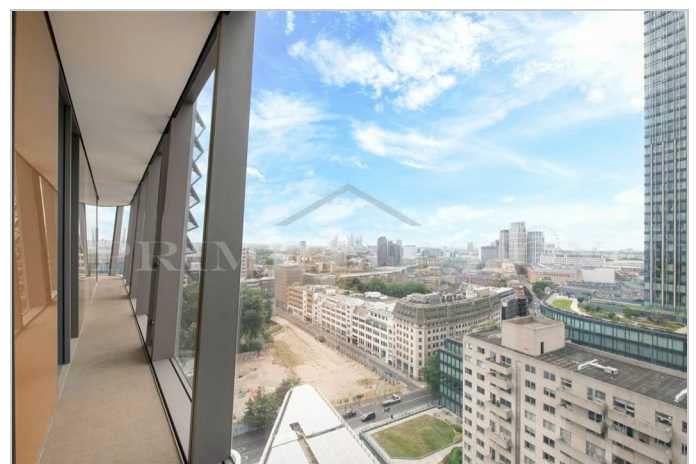
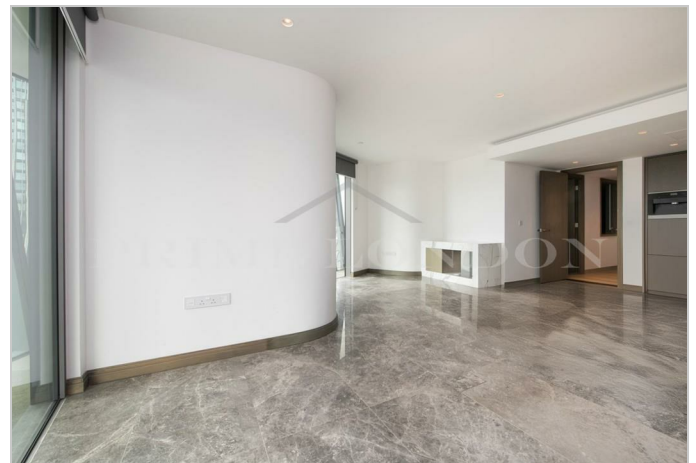
By appointment. Contact us on 0207 928 6663 if you wish to arrange a viewing appointment for this property, or require further information.

- Beautiful two bed two bath ▪ Unfurnished apartment
- 1,045 sq ft (97.08 sqm) ▪ Residents' gym, swimming pool, thermal suite
- 32nd floor executive residents' lounge ▪ Golf simulator, screening room
- Next to the River Thames ▪ 24 hour concierge

With views of the London Eye and city, this exceptional two bedroom premium apartment of 1,045 sq ft (97.08 sqm) in One Blackfriars is available to rent through Prime London.

This unfurnished apartment offers marble flooring, floor to ceiling windows, iPad control of state of the art automation and entertainment systems, stone bathrooms and wrap around winter garden. The apartment also benefits from use of the residents' gym, swimming pool, thermal suite, golf simulator, screening room, 32nd floor executive residents' lounge area and wine cellars.

One Blackfriars is located next to Southbank in the heart of London's cultural district and 0.3 miles from Southwark Underground Station for the Jubilee Line. Blackfriars Underground and Overground Station are also located 0.3 miles away across Blackfriars Bridge. The apartment is conveniently located for the City, Canary Wharf and the West End via the Jubilee Line. Times and distances quoted are approximate.



These particulars, whilst believed to be accurate are set out as a general outline only for guidance and do not constitute any part of an offer or contract. Intending purchasers should not rely on them as statements of representation of fact, but must satisfy themselves by inspection or otherwise as to their accuracy. No person in this firm's employment has the authority to make or give any representation or warranty in respect of the property.