

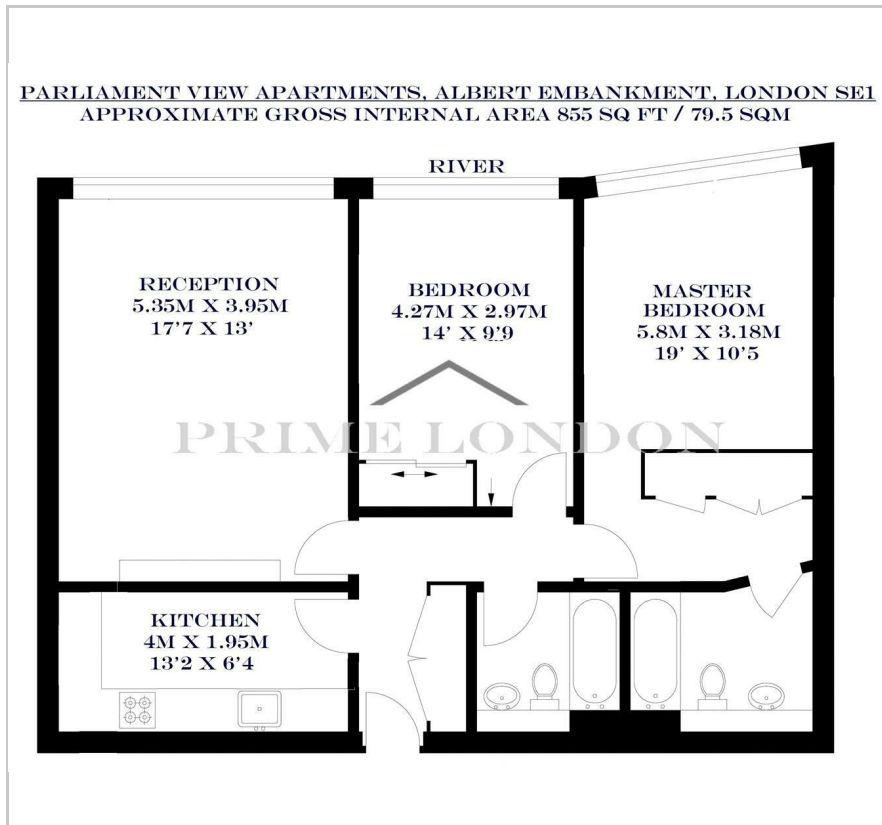
## Parliament View Apartments

1 Albert Embankment, SE1 7XQ

£715 Per Week



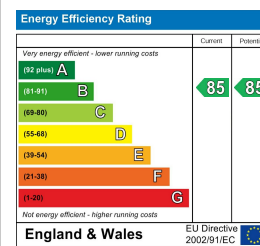
## Floor Plan



## Area Map



## Energy Efficiency Graph



## Viewing

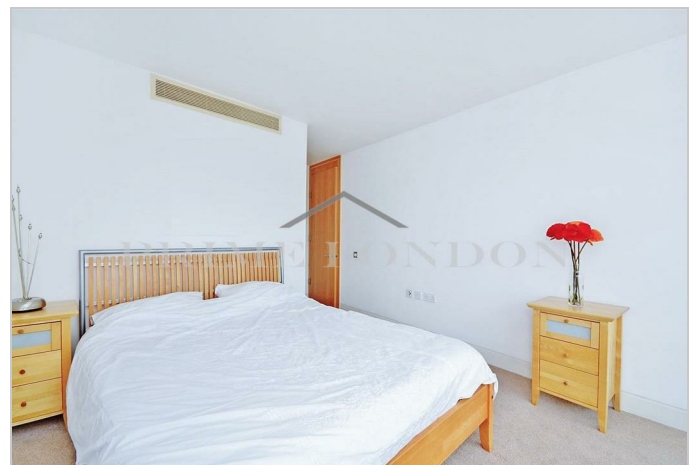
By appointment. Contact us on 0207 928 6663 if you wish to arrange a viewing appointment for this property, or require further information.

- Views of the Houses of Parliament and the River Thames
- 24 hour concierge service and resident's gymnasium
- Excellent location on the river between Lambeth and Vauxhall Bridge
- Within easy reach of the West End, Westminster, the City and South Bank

Amazing views of the Houses of Parliament and the River Thames are afforded from this bright 855 sq ft (79.5 sqm) two bedroom apartment, available for lease through Prime London.

The property comprises a spacious reception room with floor to ceiling windows and superb views, two double bedrooms with ensuite to master, a separate fitted kitchen and a contemporary bathroom.

Parliament View itself offers a 24 hour concierge service, resident's gymnasium and an excellent location on the river between Lambeth and Vauxhall Bridge. As a result the development is within easy reach of the West End, Westminster, the City and South Bank. Vauxhall rail and underground station.



These particulars, whilst believed to be accurate are set out as a general outline only for guidance and do not constitute any part of an offer or contract. Intending purchasers should not rely on them as statements of representation of fact, but must satisfy themselves by inspection or otherwise as to their accuracy. No person in this firm's employment has the authority to make or give any representation or warranty in respect of the property.