

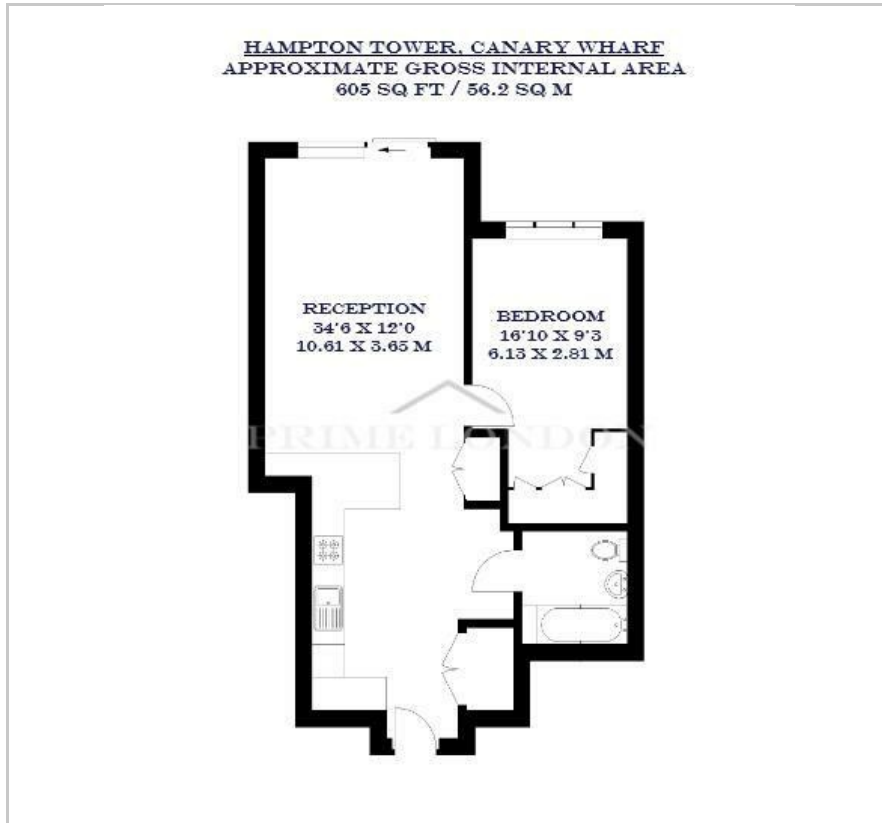
Hampton Tower

75 Marsh Wall, Canary Wharf, E14 9WS

£669 Per Week



Floor Plan



Area Map



Energy Efficiency Graph



Viewing

By appointment. Contact us on 0207 928 6663 if you wish to arrange a viewing appointment for this property, or require further information.

- One bedroom apartment
- 605 sq ft (56.2 sqm)
- Floor to ceiling windows with views of the Thames
- Comfort cooling and underfloor heating
- Spacious bedroom with built-in wardrobe
- 5-star facilities including gym, pool and terrace
- 6 minute walk to Canary Wharf underground station
- 24 hour concierge

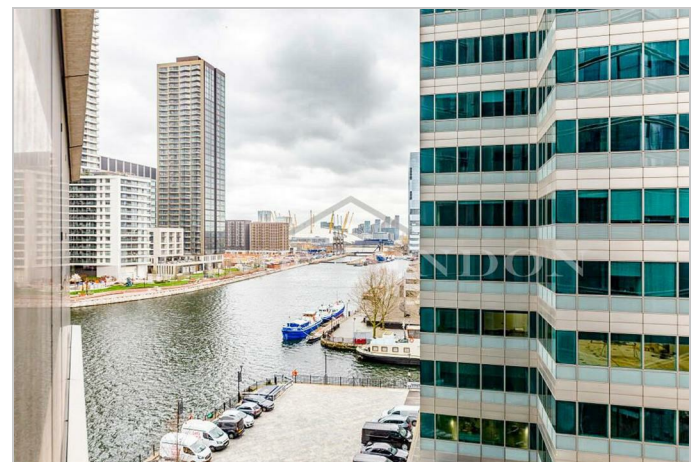


This well positioned one bedroom apartment, located in Hampton Tower, one of the tallest residential buildings in Europe, is available for lease through Prime London.

Totalling 605 sq ft (56.2 sqm), this property features an open plan reception area with a fully integrated kitchen, leading on to has large floor to ceiling windows, offering truly stunning views of Canary Wharf. One double bedroom with fitted wardrobes, and one bathroom. The apartment has luxury finishes throughout and benefits from under floor heating and comfort cooling.

Every resident will become exclusive members of The Quay Club, providing 5-star facilities including a state of the art gym, 20m swimming pool overlooking the South Dock, business lounge, screening room and private dining room, as well as the stunning 56th floor bar and terrace, offering incredible views of the city skyline.

Located just a few moments from the heart of London's financial district, Hampton Tower stands within 2.6 acres of beautiful landscaped gardens and over 150 new trees, feeling like an urban oasis. For transport, Canary Wharf station is just a 6 minute walk away, servicing the Jubilee line and DLR.



These particulars, whilst believed to be accurate are set out as a general outline only for guidance and do not constitute any part of an offer or contract. Intending purchasers should not rely on them as statements of representation of fact, but must satisfy themselves by inspection or otherwise as to their accuracy. No person in this firm's employment has the authority to make or give any representation or warranty in respect of the property.