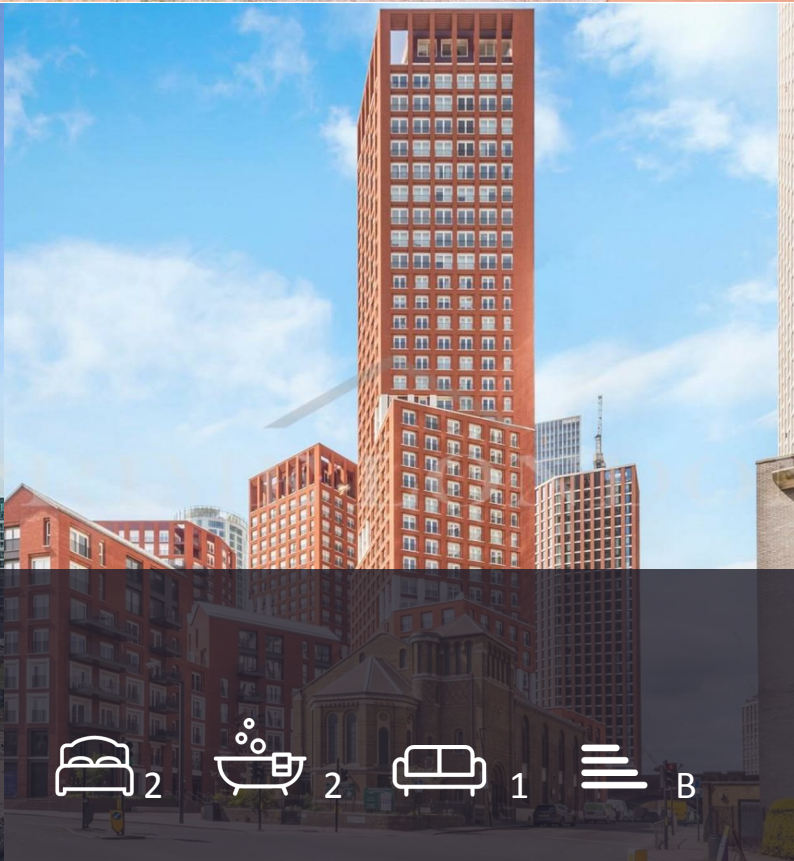




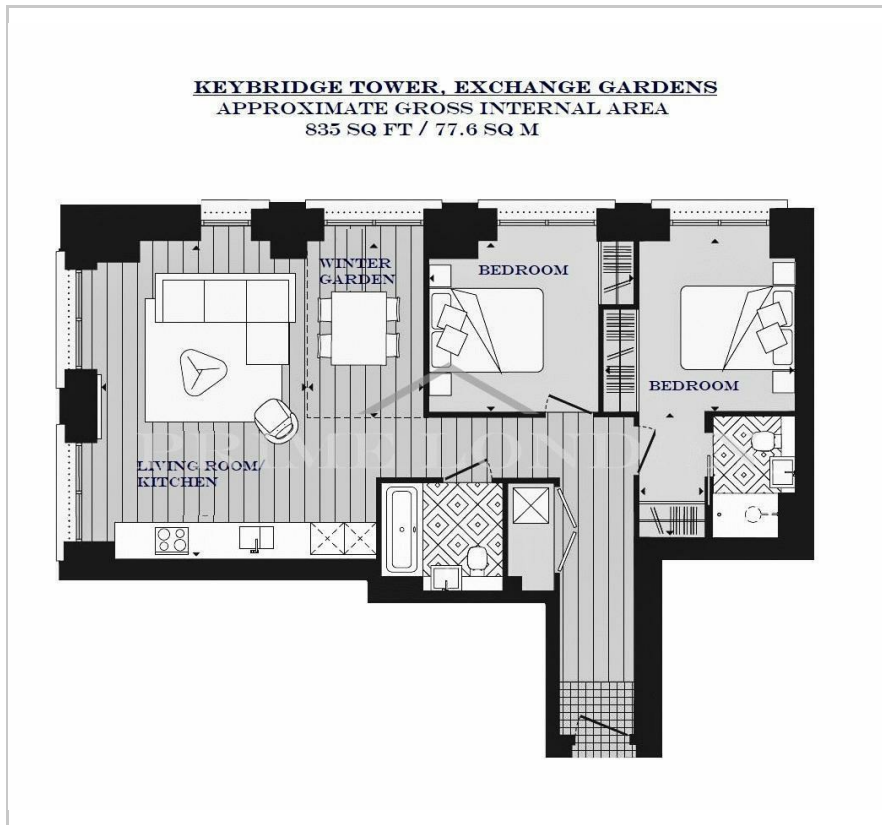
Keybridge Tower

1 Exchange Gardens, Vauxhall, SW8 1DF

Asking Price £915,000



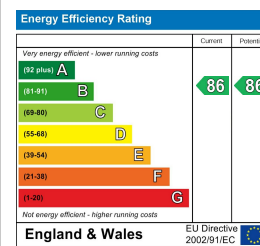
Floor Plan



Area Map



Energy Efficiency Graph



Viewing

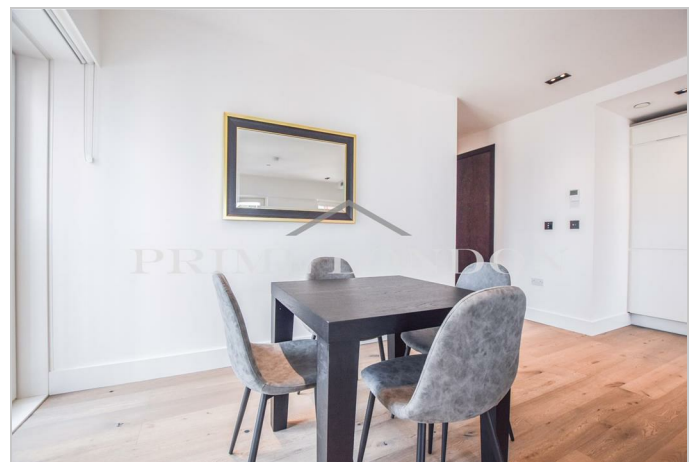
By appointment. Contact us on 0207 928 6663 if you wish to arrange a viewing appointment for this property, or require further information.

- Modern two bedroom ▪ 835 sq ft (77.6 sq m) apartment
- Chain free
- Gym, pool, spa, sauna and steam room
- Next to the new Nine Elms Northern Line tube station
- 24-hour concierge service and residents' Club Lounge

This modern warehouse style two bedroom apartment, set in the highly sought after Keybridge development, is available for chain free sale through Prime London.

The property is an excellent size at 835 sq ft (77.6 sq m) and is located in the UK's tallest brick tower, which is also surrounded by 1 acre of landscaped open space. Comprising of an open plan reception room, smart integrated kitchen, two large double bedrooms with great storage and two luxury bathrooms, the apartment is well designed to be lived in and enjoyed.

Residents will benefit from a 24 hour concierge service, 15 metre swimming pool, a club lounge and communal gardens, all within walking distance of Zone 1 transport links.



These particulars, whilst believed to be accurate are set out as a general outline only for guidance and do not constitute any part of an offer or contract. Intending purchasers should not rely on them as statements of representation of fact, but must satisfy themselves by inspection or otherwise as to their accuracy. No person in this firm's employment has the authority to make or give any representation or warranty in respect of the property.